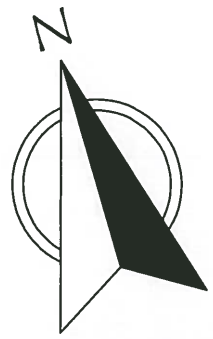
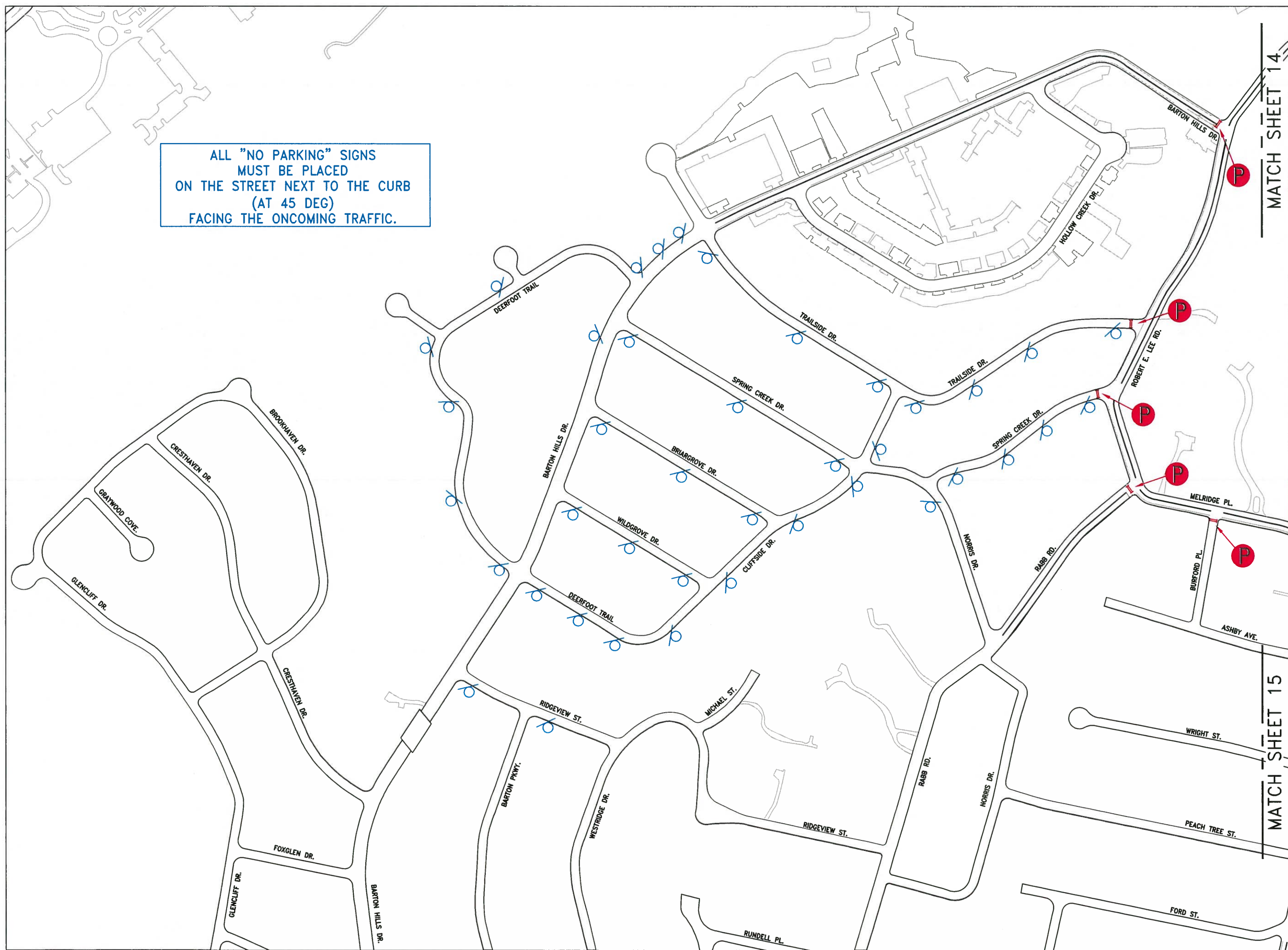


ALL "NO PARKING" SIGNS
MUST BE PLACED
ON THE STREET NEXT TO THE CURB
(AT 45 DEG)
FACING THE ONCOMING TRAFFIC.



SCALE: 1"=300'

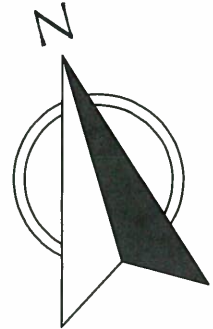
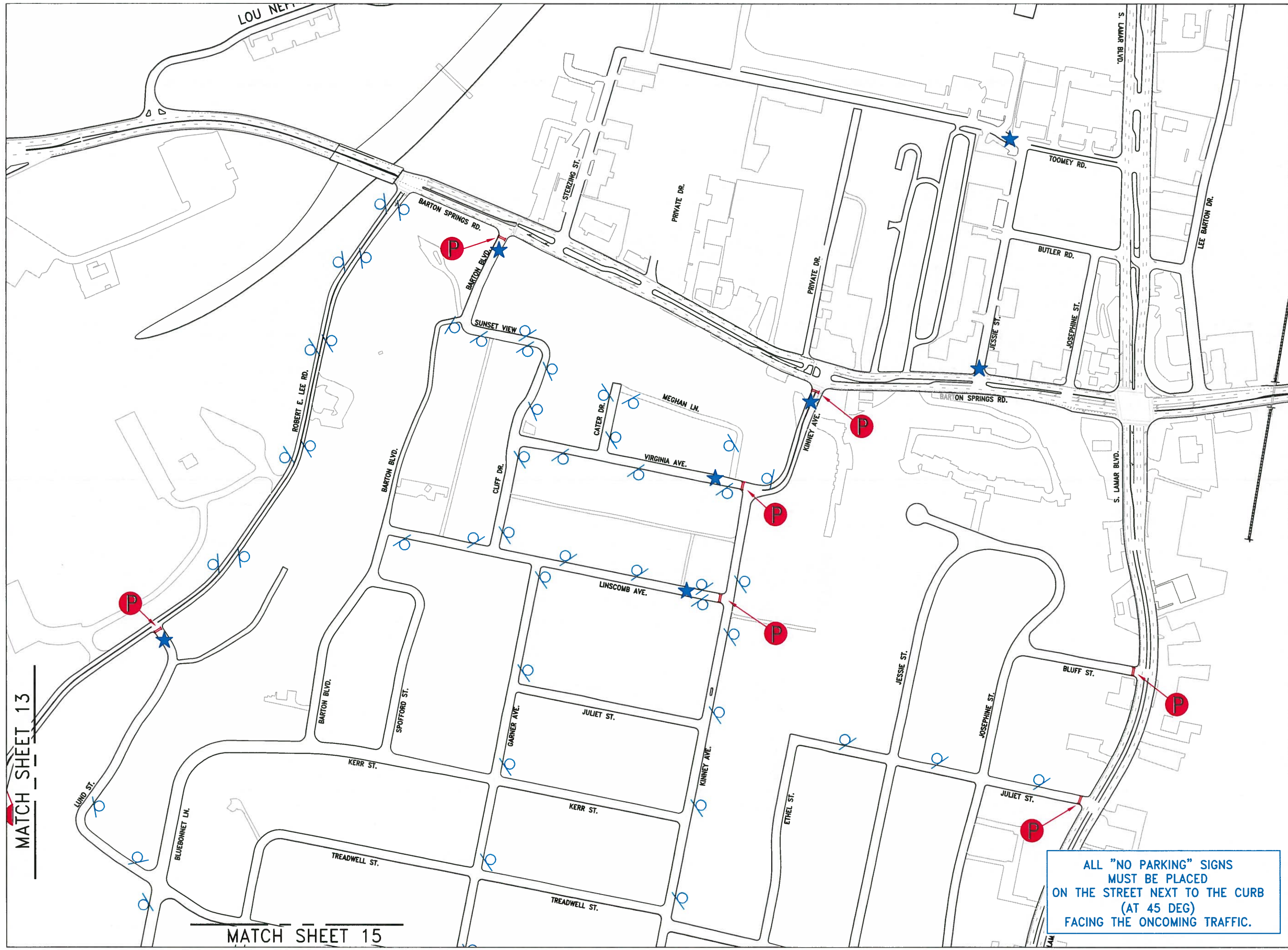
TRAFFIC CONTROL PLAN
ZILKER KITE FESTIVAL 2018
RESTRICTED PARKING
BARTON HILLS DRIVE

CITY OF AUSTIN, 505 BARTON SPRINGS ROAD
SUITE 1070 AUSTIN, TEXAS 78704

DESIGNED BY: J. OLVERA DATE: Feb. 21, 2018

Diagram showing traffic signs: a 'NO PARKING' sign with a blue 'P' and a red 'X', a 'TOW-AWAY ZONE' sign, and a 'NO EVENT PARKING IN THE NEIGHBORHOOD' sign. Below the signs is the text: (TYPE III BARRICADE WITH NO EVENT PARKING SIGN)





SCALE: 1"=300'

TRAFFIC CONTROL PLAN
ZILKER KITE FESTIVAL 2018
RESTRICTED PARKING
BARTON SPRINGS / ROBERT E. LEE
CITY OF AUSTIN, 505 BARTON SPRINGS ROAD
SUITE 1070 AUSTIN, TEXAS 78704
DESIGNED BY: J. OLVERA
DATE: Feb. 21, 2018

★ APD

⊗

 THIS BLOCK THIS SIDE OF STREET ONE-WAY ZONE

 NO EVENT PARKING IN THE NEIGHBORHOOD 

(TYPE III BARRICADE WITH NO EVENT PARKING SIGN)

STATE OF TEXAS

★

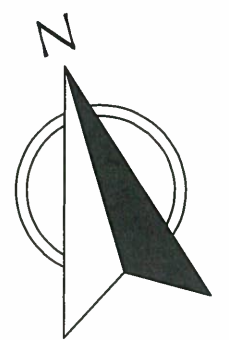
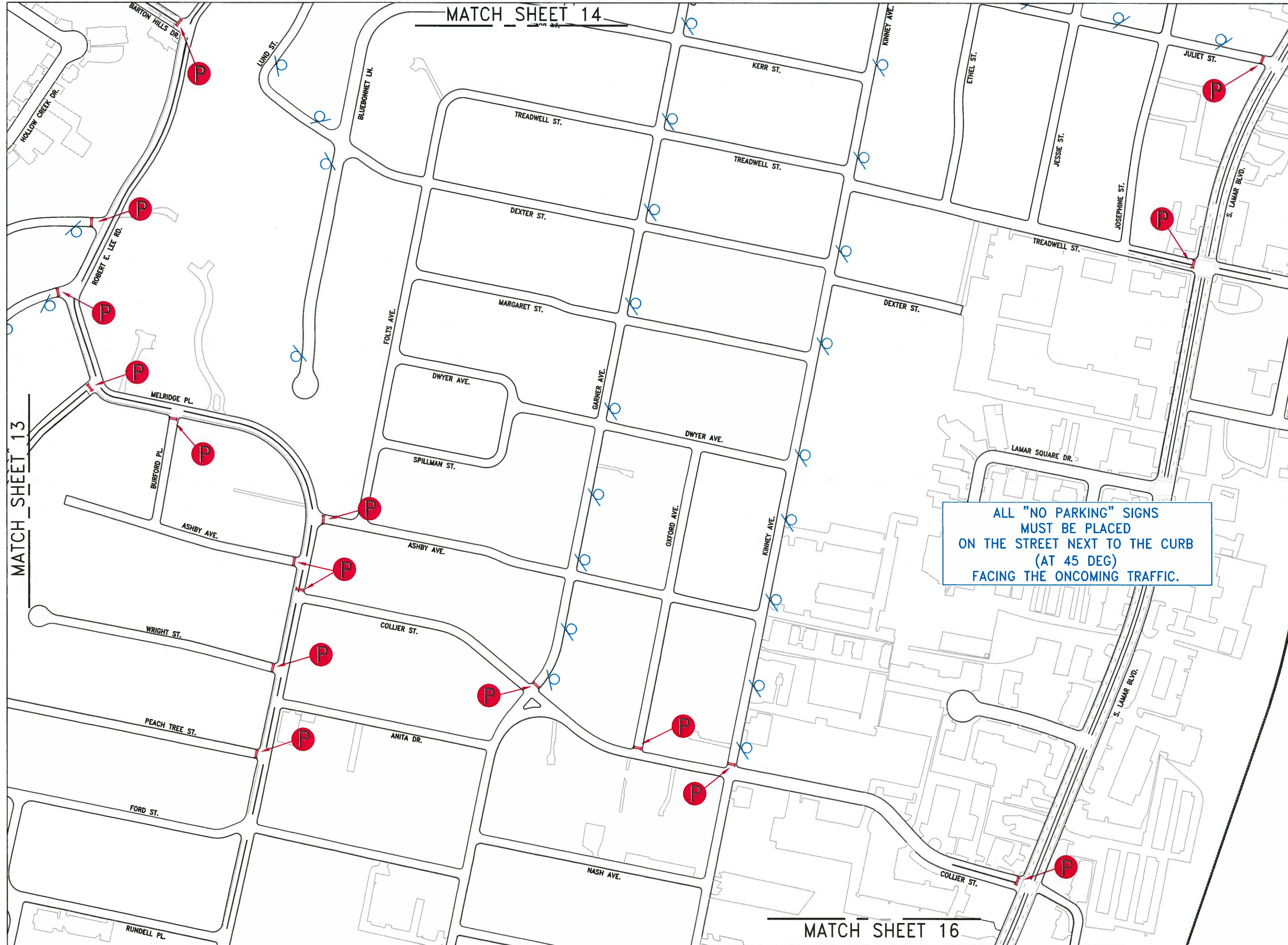
A. LEE AUSTIN

100969

PROFESSIONAL ENGINEER

2/23/2018

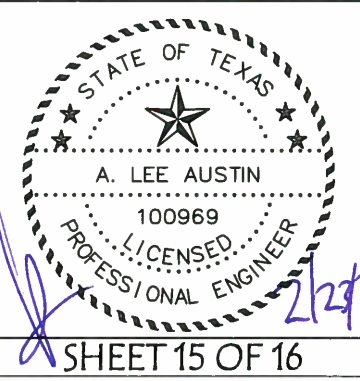
ALL "NO PARKING" SIGNS
MUST BE PLACED
ON THE STREET NEXT TO THE CURB
(AT 45 DEG)
FACING THE ONCOMING TRAFFIC.

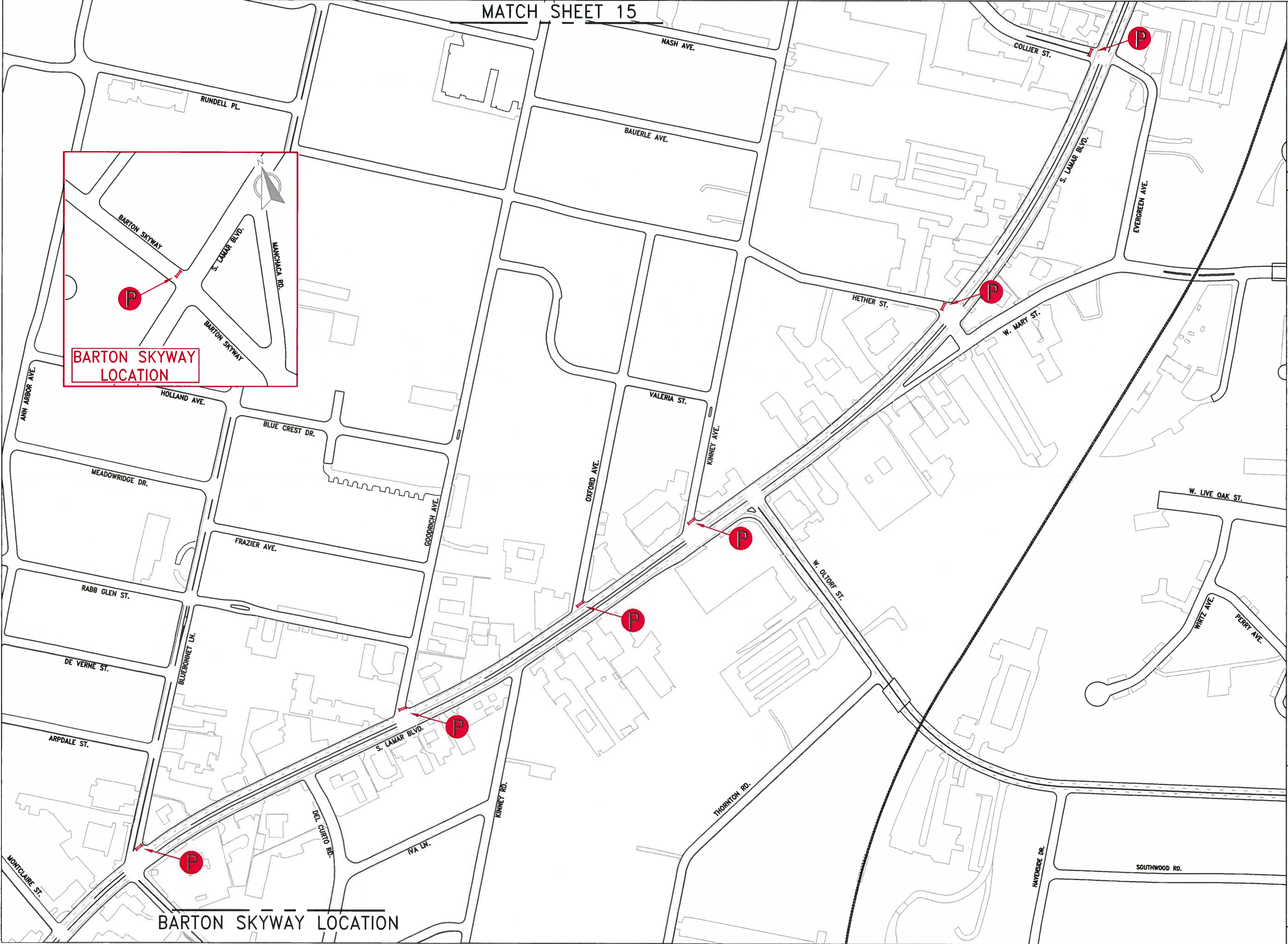


SCALE: 1"=300'

TRAFFIC CONTROL PLAN
ZILKER KITE FESTIVAL 2018
RESTRICTED PARKING
KINNEY AVE. / TREADWELL ST.
CITY OF AUSTIN, 505 BARTON SPRINGS ROAD
SUITE 1070 AUSTIN, TEXAS 78704
DESIGNED BY: J. OLVERA
DATE: Feb. 21, 2018

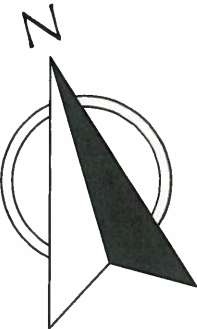
ALL "NO PARKING" SIGNS
MUST BE PLACED
ON THE STREET NEXT TO THE CURB
(AT 45 DEG)
FACING THE ONCOMING TRAFFIC.





BARTON SKYWAY
LOCATION

BARTON SKYWAY LOCATION



SCALE: 1"=300'

TRAFFIC CONTROL PLAN
ZILKER KITE FESTIVAL 2018
RESTRICTED PARKING
S. LAMAR BLVD. / W. OLTORF ST.
CITY OF AUSTIN, 505 BARTON SPRINGS ROAD
SUITE 1070 AUSTIN, TEXAS 78704
DESIGNED BY: J. OLVERA
DATE: Feb. 21, 2018

(TYPE III BARRICADE WITH NO EVENT PARKING SIGN)

