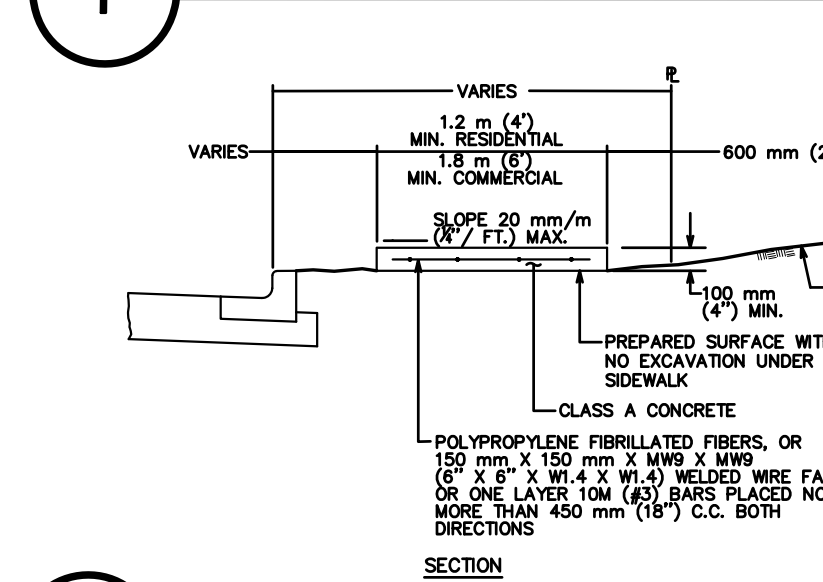
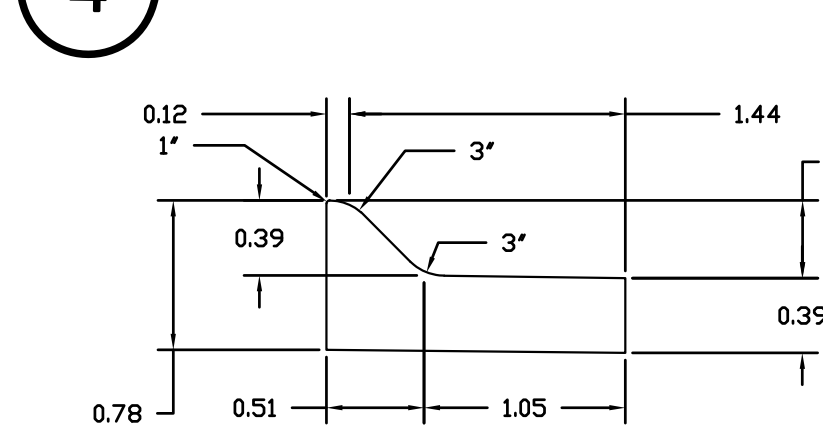


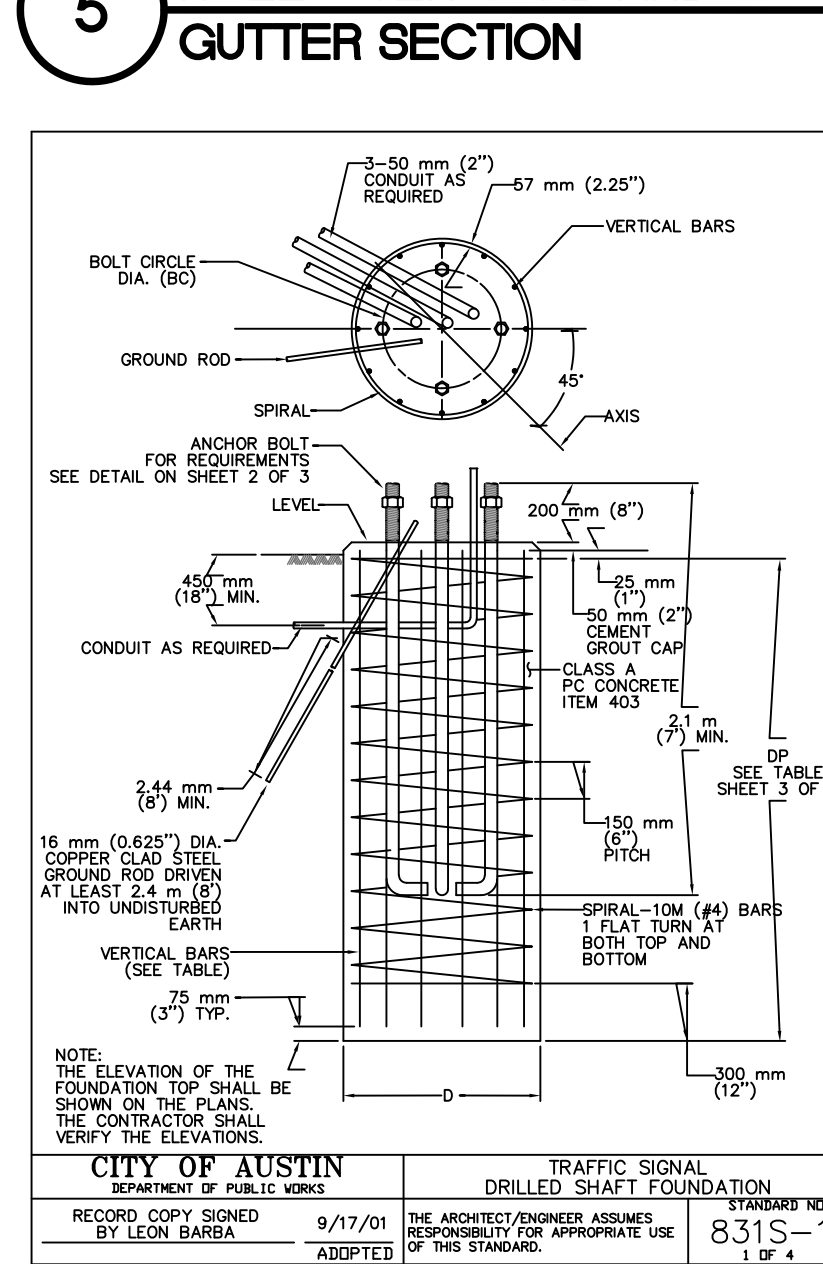
1 CURB AND GUTTER DETAIL



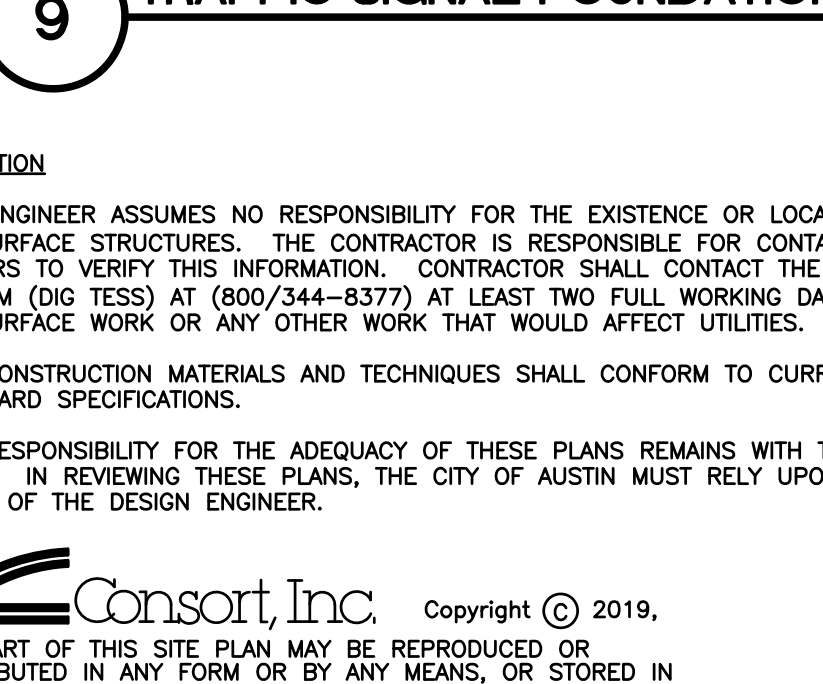
4 AT-GRADE SIDEWALK DETAIL



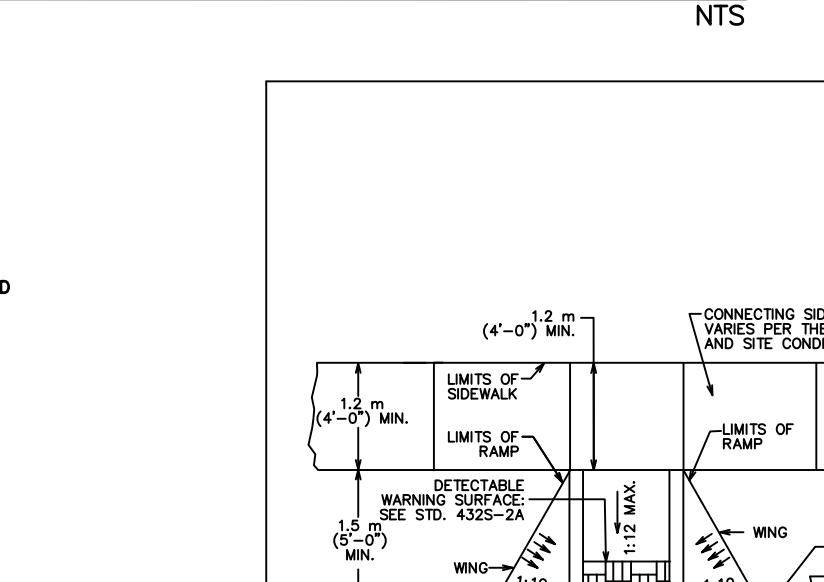
5 ROLL-OVER CURB AND GUTTER SECTION



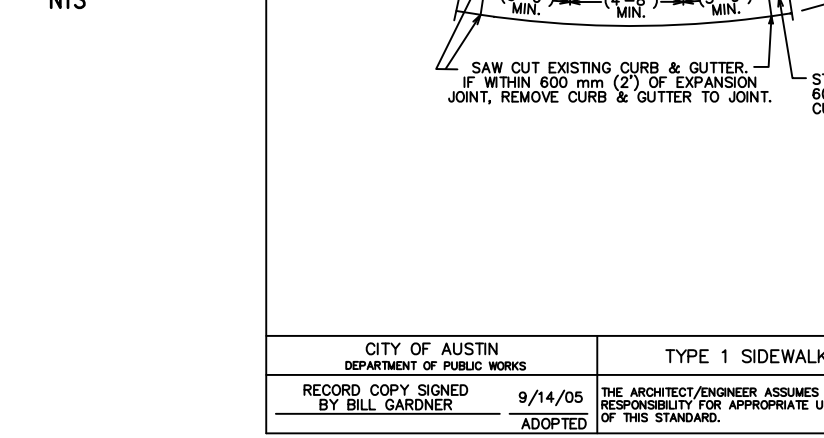
9 TRAFFIC SIGNAL FOUNDATION AND CONDUIT LAYOUT DETAIL



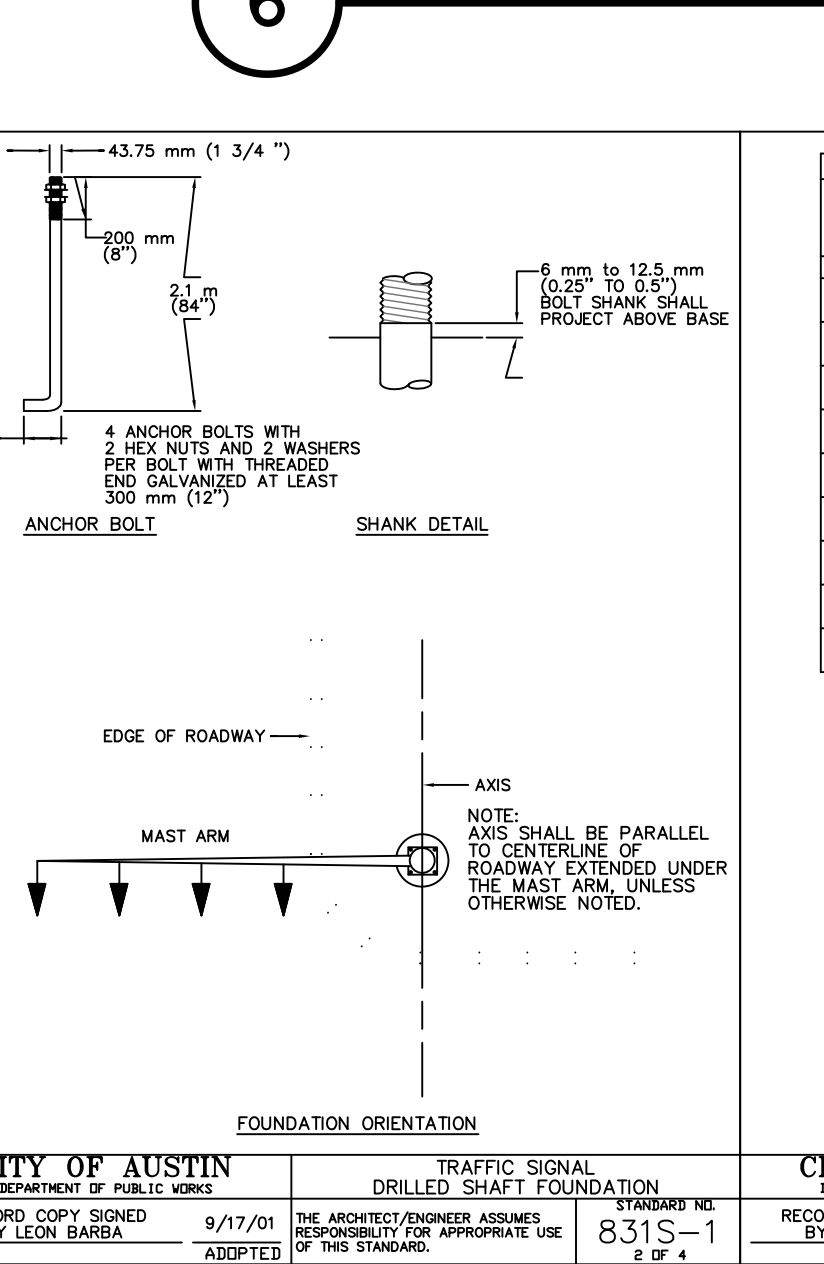
2 PUBLIC SIDEWALK



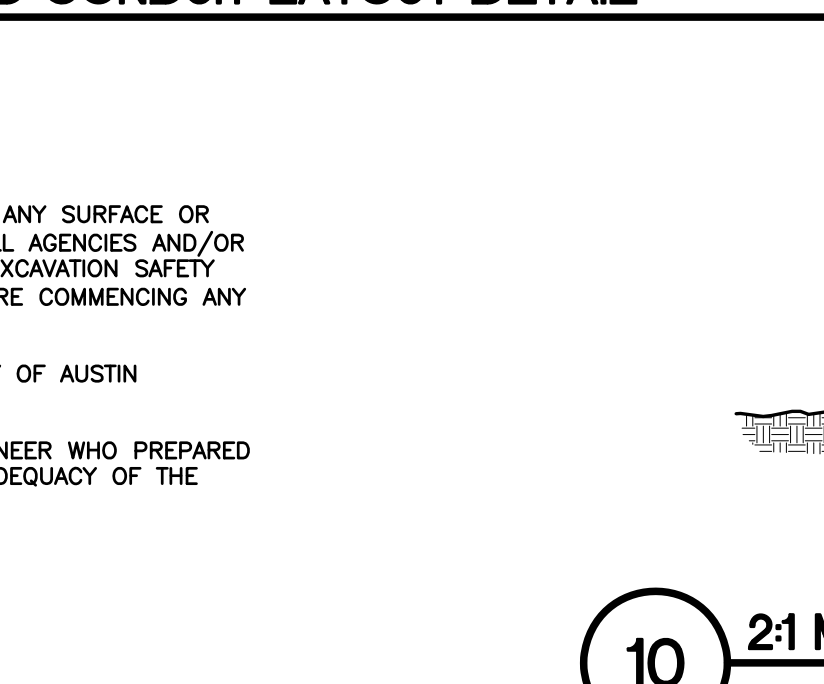
6 PUBLIC CURB RAMP DETAIL



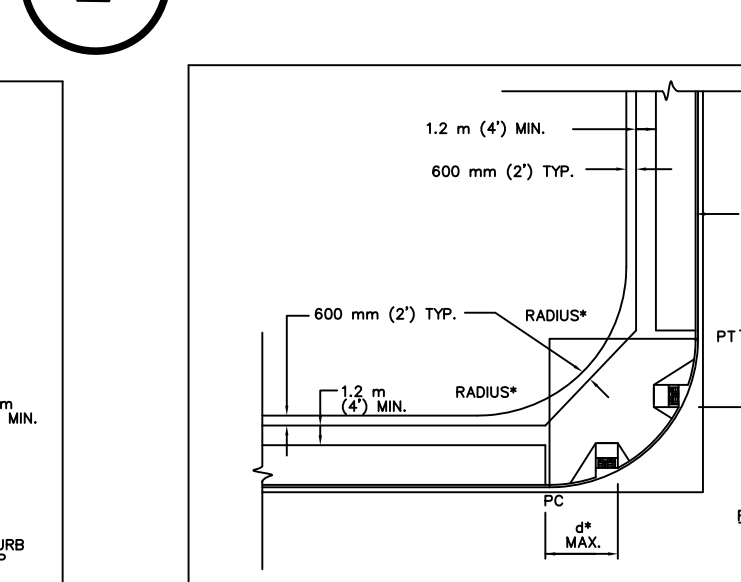
7 INTERSECTION CURB RAMP DETAIL



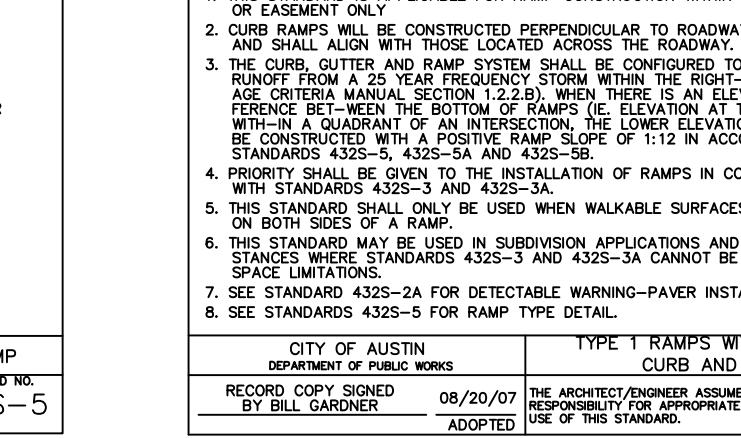
8 DETECTABLE WARNING-PAVER



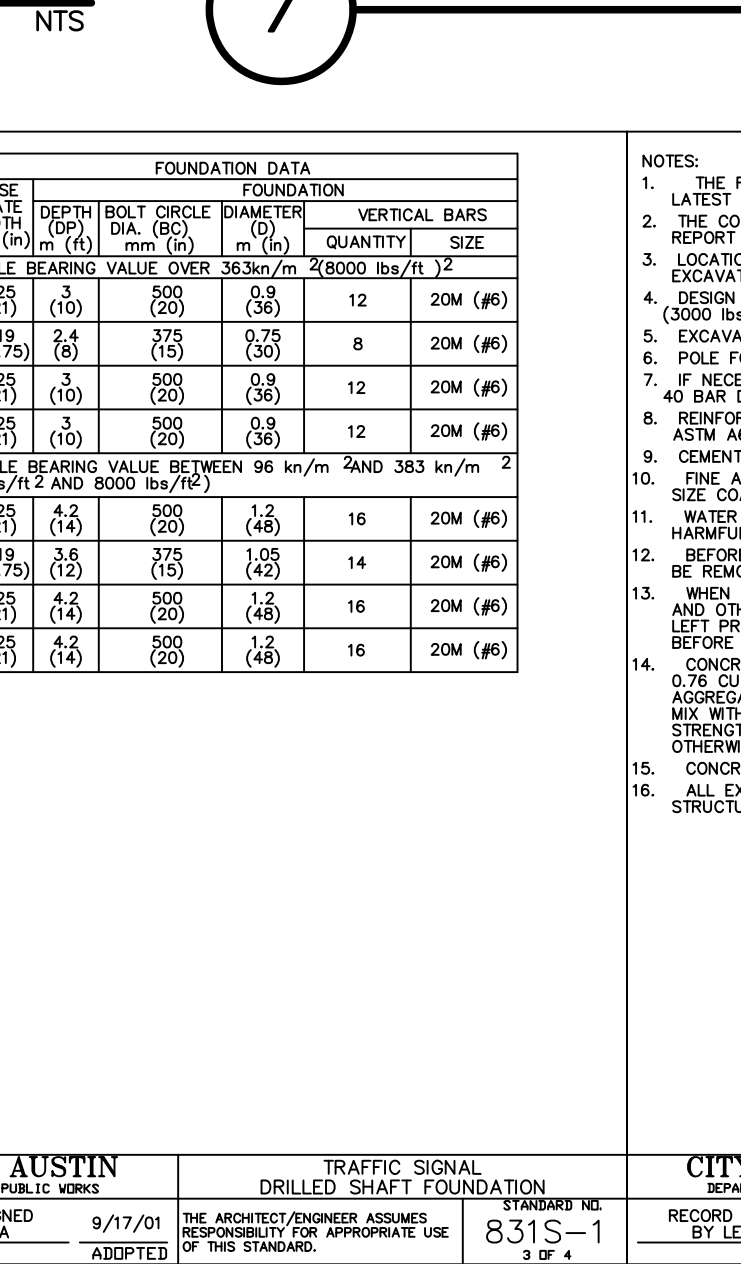
3 TYPE II DRIVEWAY



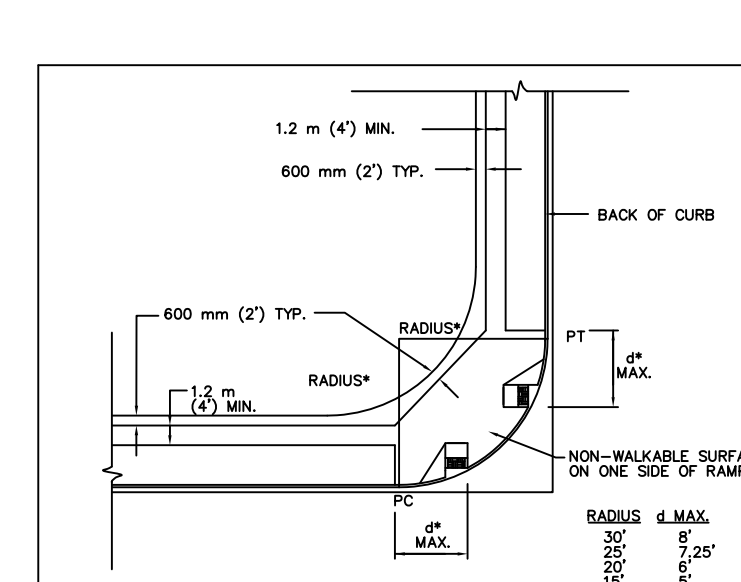
10 MORTARED STACK WALL DETAIL



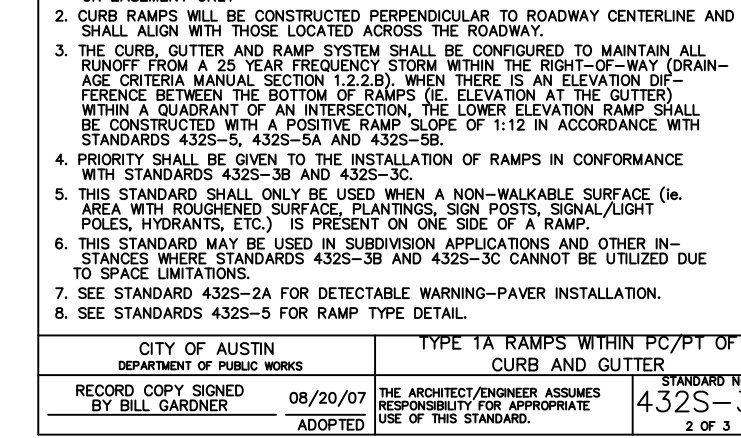
11 STEEL PLATE PLANTER/EDGING DETAIL



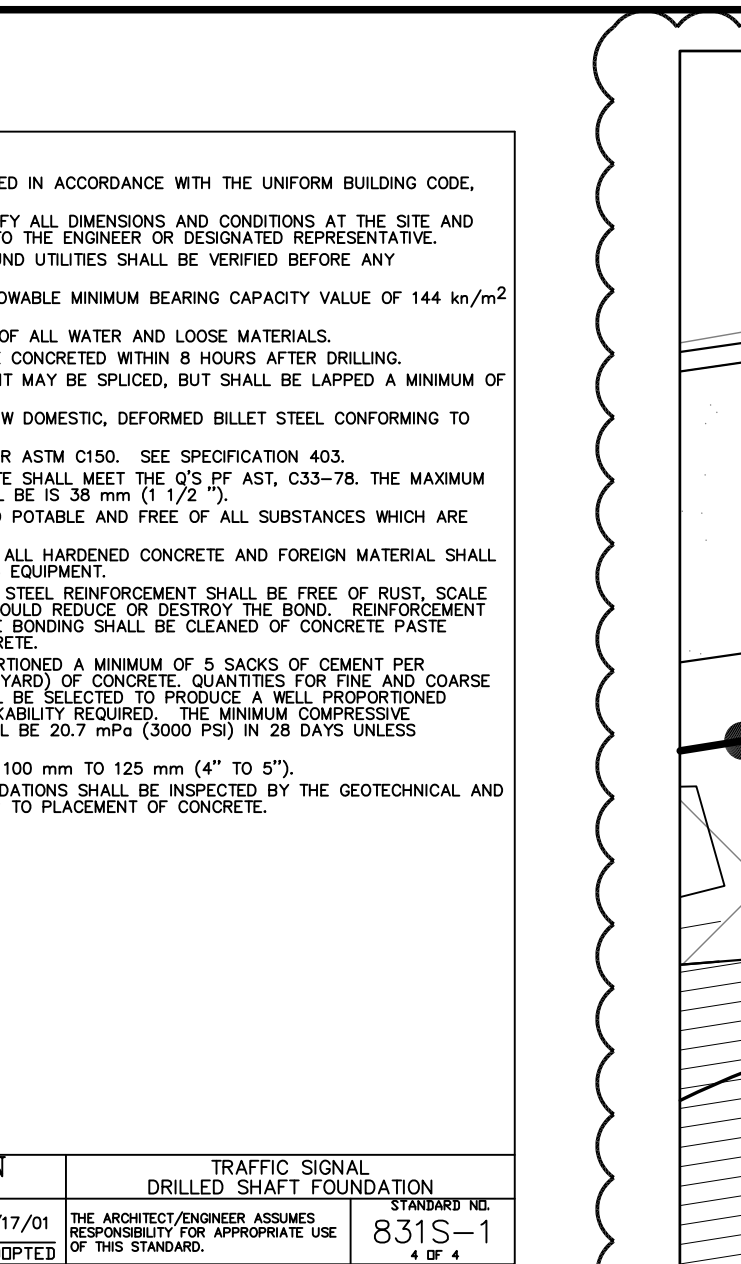
12 TRAFFIC SIGNAL FOUNDATION AND CONDUIT LAYOUT DETAIL



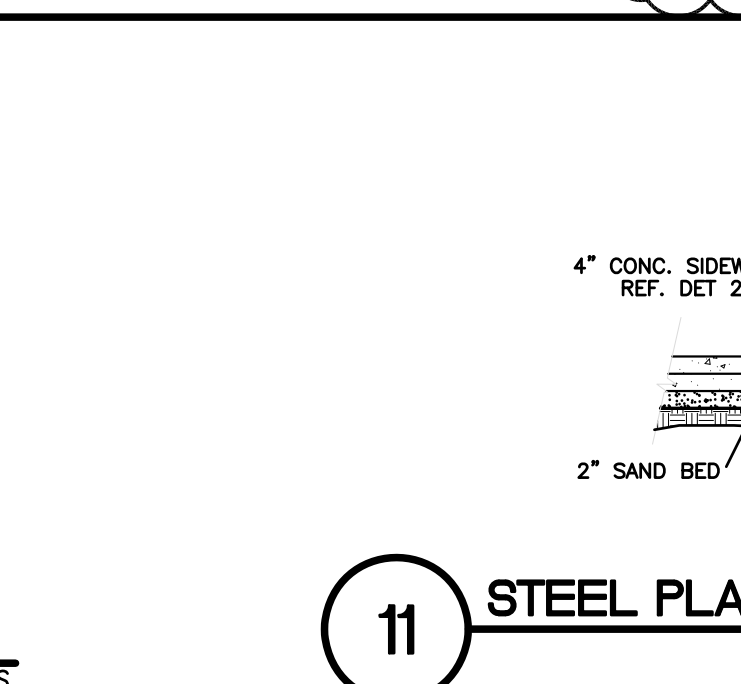
13 TRAFFIC SIGNAL FOUNDATION AND CONDUIT LAYOUT DETAIL



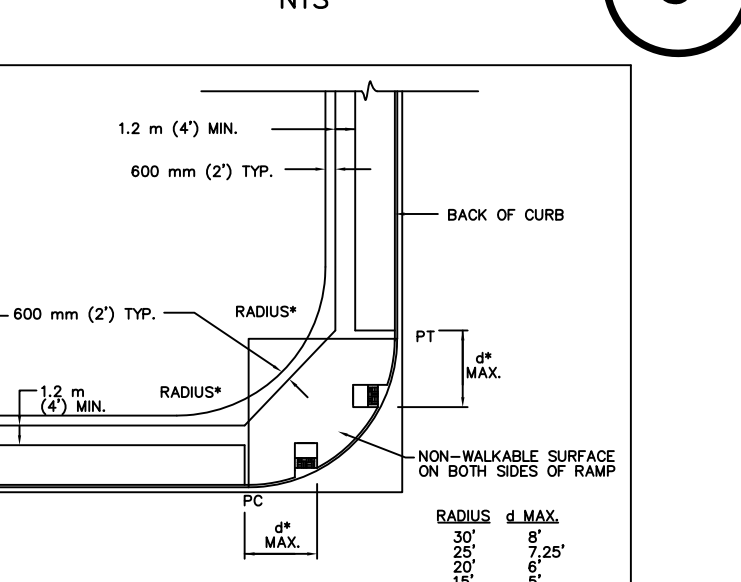
14 TRAFFIC SIGNAL FOUNDATION AND CONDUIT LAYOUT DETAIL



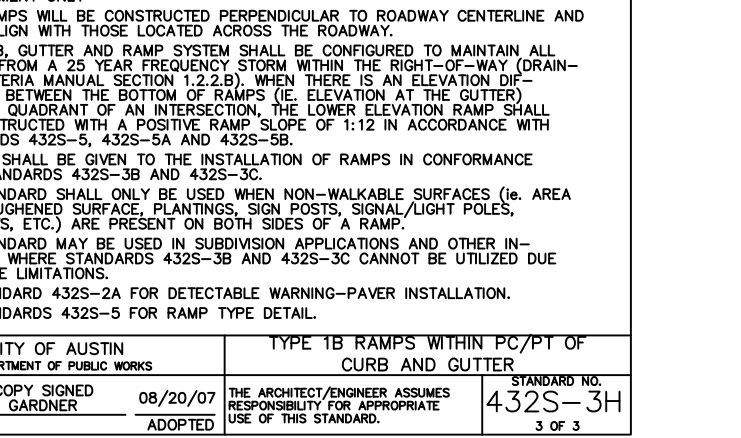
15 TRAFFIC SIGNAL FOUNDATION AND CONDUIT LAYOUT DETAIL



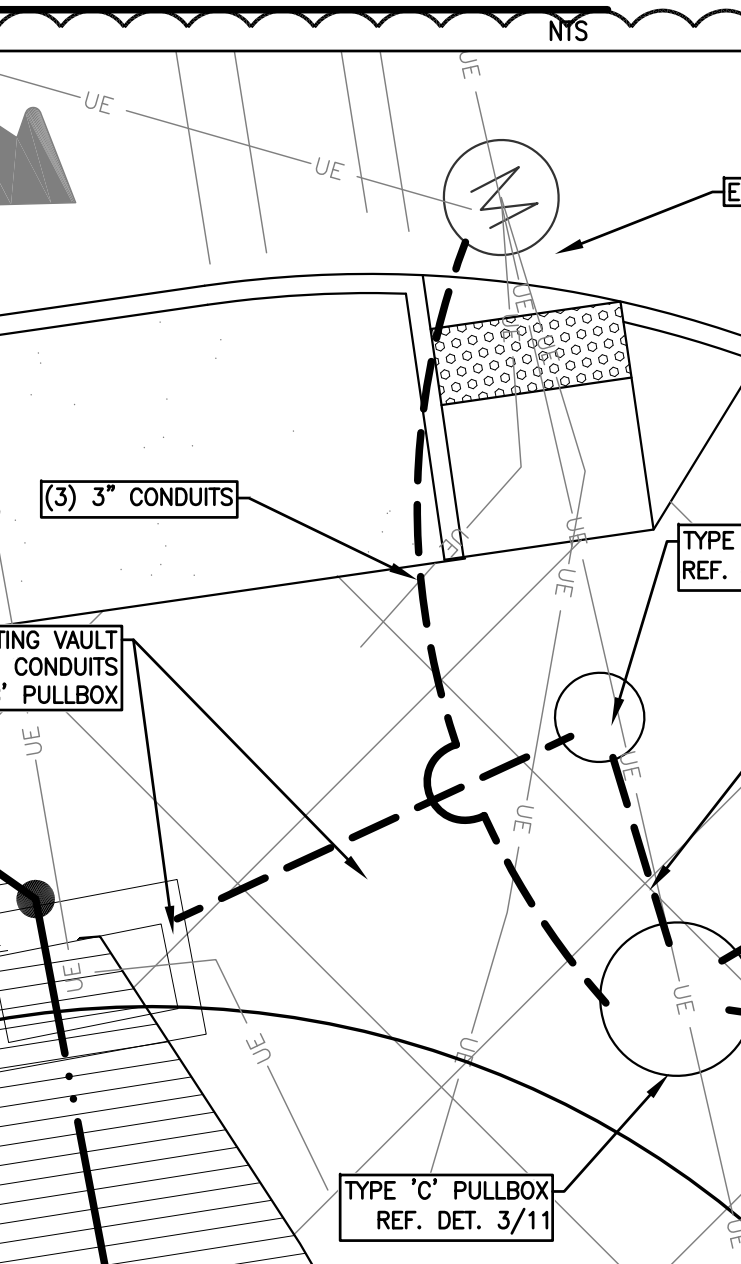
16 TRAFFIC SIGNAL FOUNDATION AND CONDUIT LAYOUT DETAIL



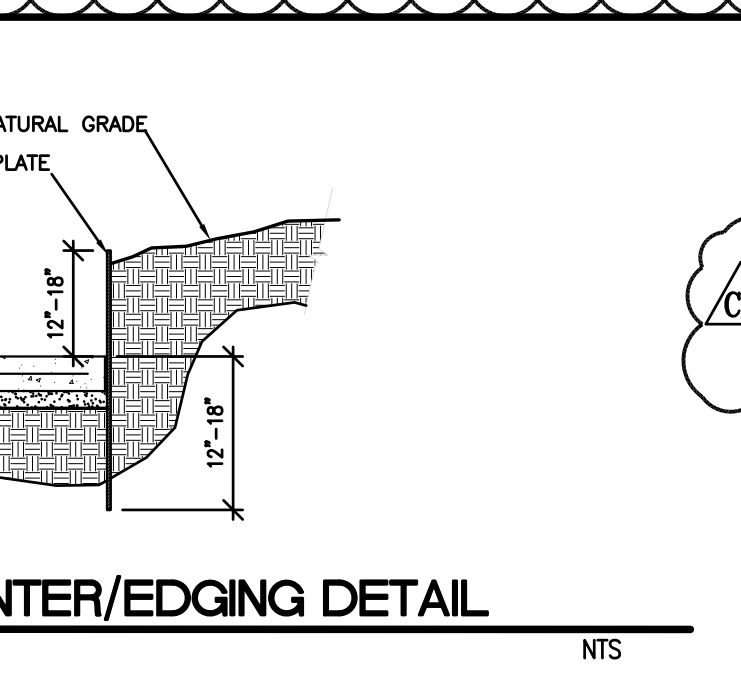
17 TRAFFIC SIGNAL FOUNDATION AND CONDUIT LAYOUT DETAIL



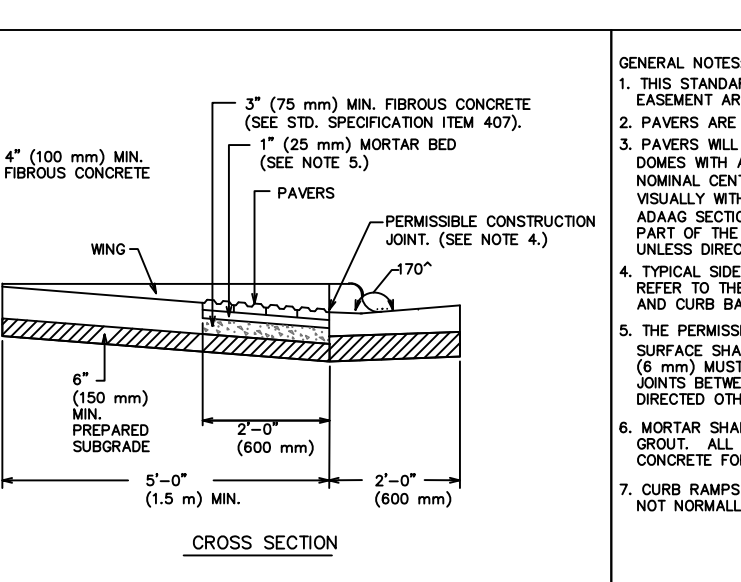
18 TRAFFIC SIGNAL FOUNDATION AND CONDUIT LAYOUT DETAIL



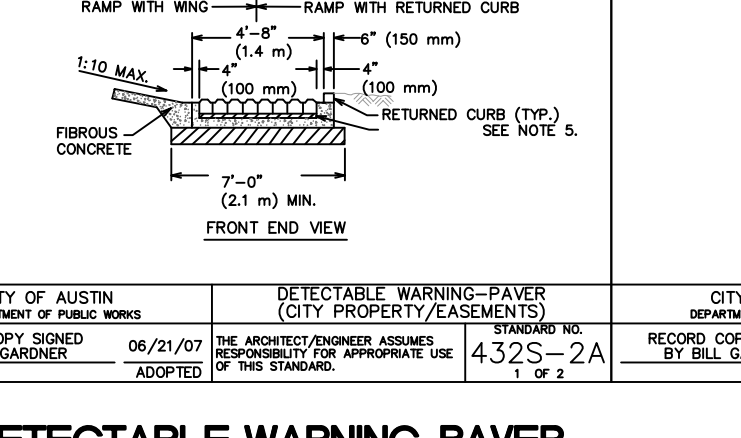
19 TRAFFIC SIGNAL FOUNDATION AND CONDUIT LAYOUT DETAIL



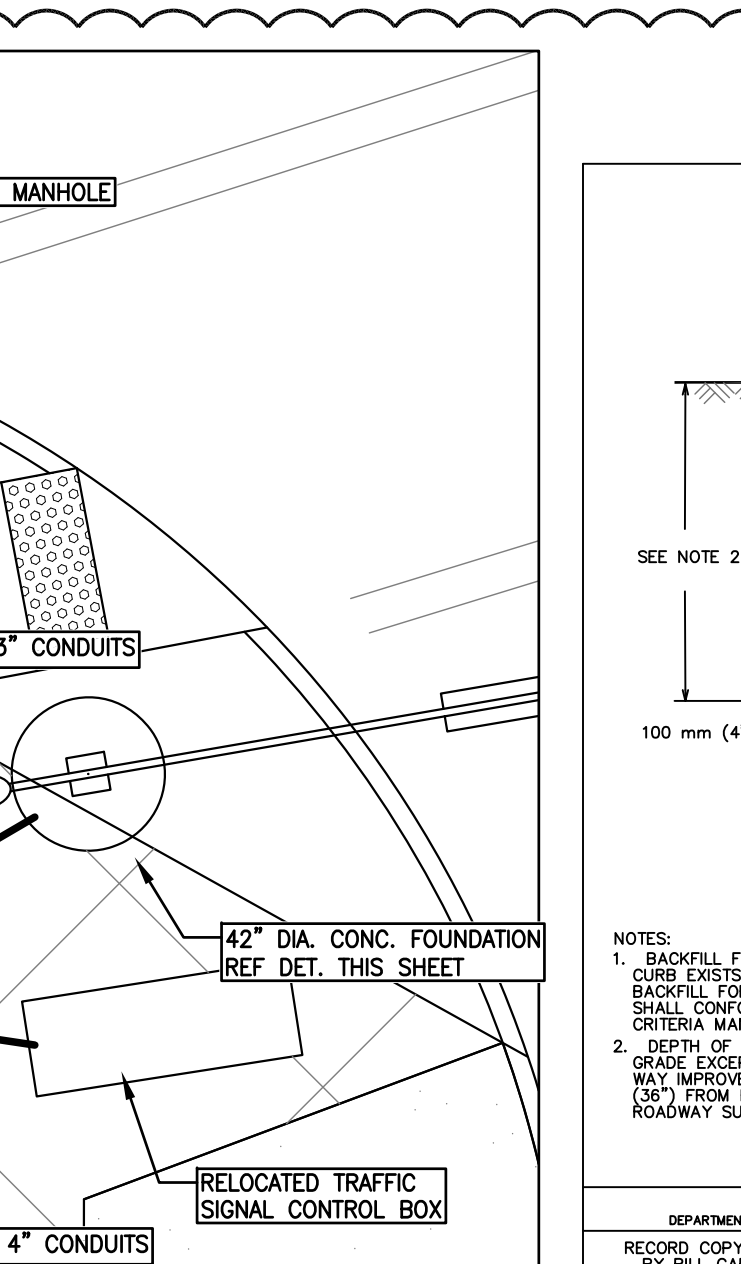
20 TRAFFIC SIGNAL FOUNDATION AND CONDUIT LAYOUT DETAIL



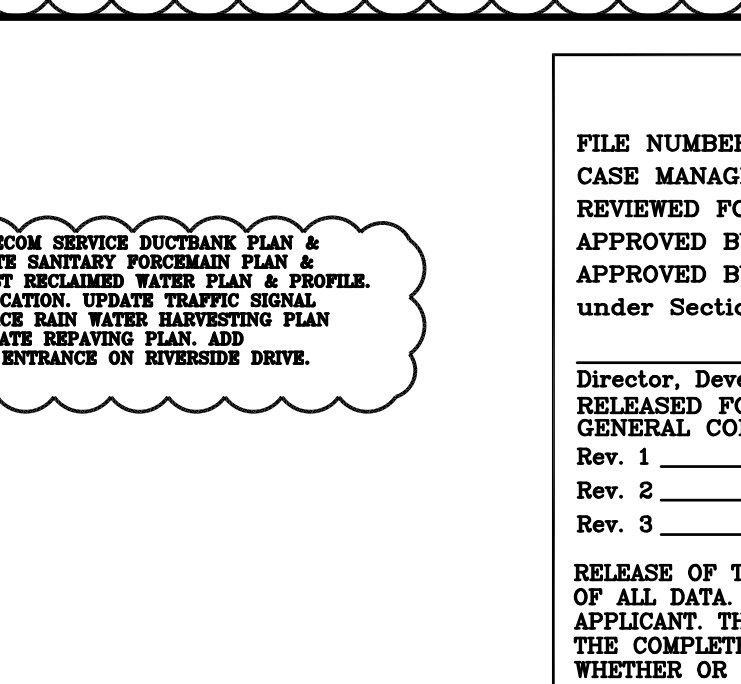
21 TRAFFIC SIGNAL FOUNDATION AND CONDUIT LAYOUT DETAIL



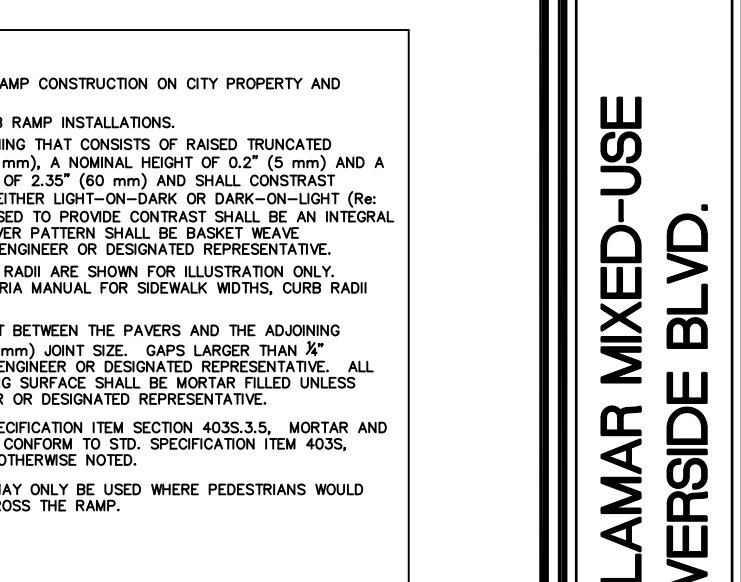
22 TRAFFIC SIGNAL FOUNDATION AND CONDUIT LAYOUT DETAIL



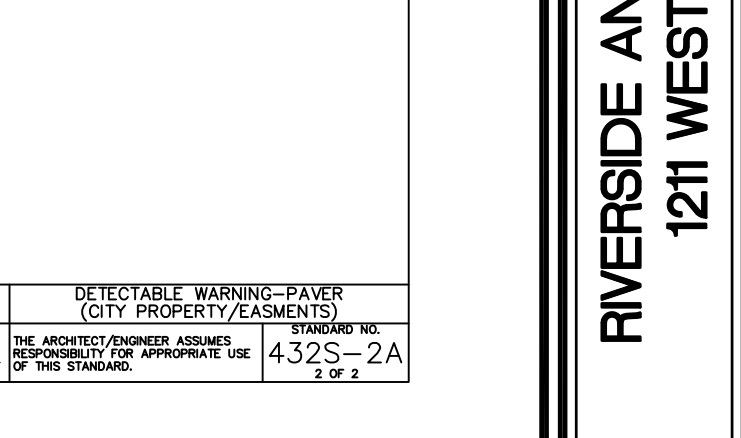
23 TRAFFIC SIGNAL FOUNDATION AND CONDUIT LAYOUT DETAIL



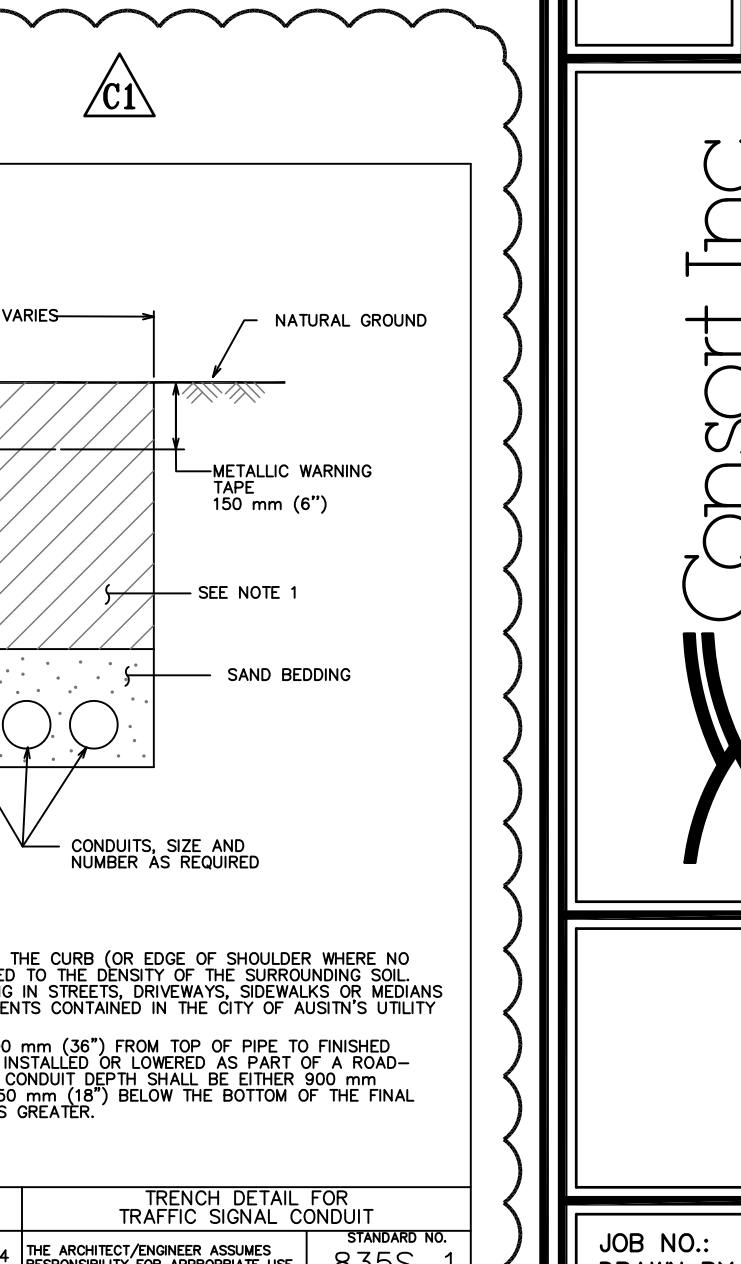
24 TRAFFIC SIGNAL FOUNDATION AND CONDUIT LAYOUT DETAIL



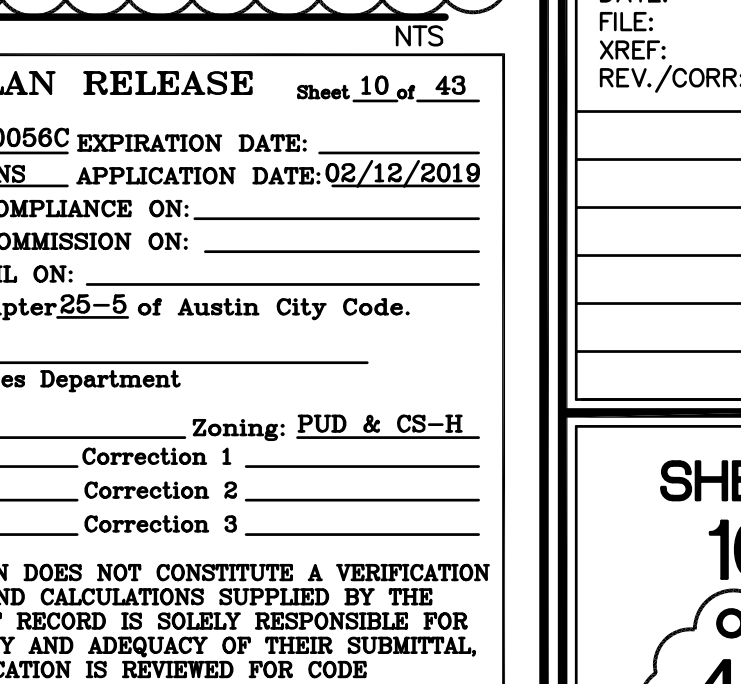
25 TRAFFIC SIGNAL FOUNDATION AND CONDUIT LAYOUT DETAIL



26 TRAFFIC SIGNAL FOUNDATION AND CONDUIT LAYOUT DETAIL



27 TRAFFIC SIGNAL FOUNDATION AND CONDUIT LAYOUT DETAIL



STATE OF TEXAS
MARK T. BURSON
66334
LICENSED PROFESSIONAL ENGINEER
06/01/20

SARDIS LONE STAR, L.L.C.
84 WOOSTER STREET,
SUITE 603
NEW YORK, NY 10012

1211 WEST RIVERSIDE BLVD.
SITE PLAN DETAILS 1

Consort, Inc.
200 West 10th Street, Suite 100, Austin, TX 78701
P: 512-466-0000
F: 512-466-0001
E: info@consortinc.com
www.consortinc.com

JOB NO.: 1559-001
DRAWN BY: [Name]
SCALE: [Scale]
DATE: 06/01/20
FILE: [File]
XREF: [Xref]
REV./CORR: [Rev/Corr]

SHEET
10
of
43

SITE PLAN RELEASE

FILE NUMBER: SP-2019-0056C EXPIRATION DATE: 02/12/2019
CASE MANAGER: RENEE JOHNS APPLICATION DATE: 02/12/2019
REVIEWED FOR GENERAL COMPLIANCE ON:
APPROVED BY PLANNING COMMISSION ON:
APPROVED BY CITY COUNCIL ON:
under Section 112. of Chapter 25-5 of Austin City Code.

Director, Development Services Department
RELEASED FOR:
GENERAL COMPLIANCE: [] Zoning: PUD & CS-H
Rev. 1 [] Correction 1
Rev. 2 [] Correction 2
Rev. 3 [] Correction 3

RELEASE OF THIS APPLICATION DOES NOT CONSTITUTE A VERIFICATION OF ALL DATA, INFORMATION AND CALCULATIONS SUPPLIED BY THE APPLICANT. THE ENGINEER OF RECORD IS SOLELY RESPONSIBLE FOR THE COMPLETENESS, ACCURACY AND ADEQUACY OF THEIR SUBMITTAL, WHETHER OR NOT THE APPLICATION IS REVIEWED FOR CODE COMPLIANCE BY CITY ENGINEERS.