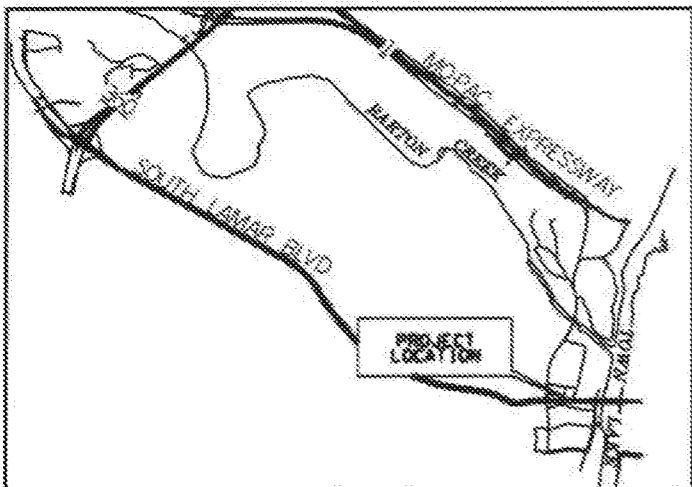
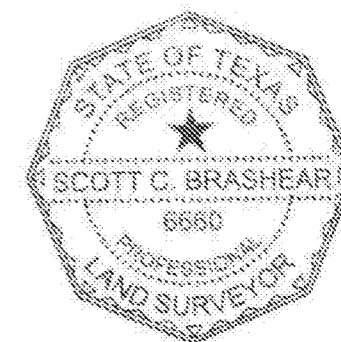
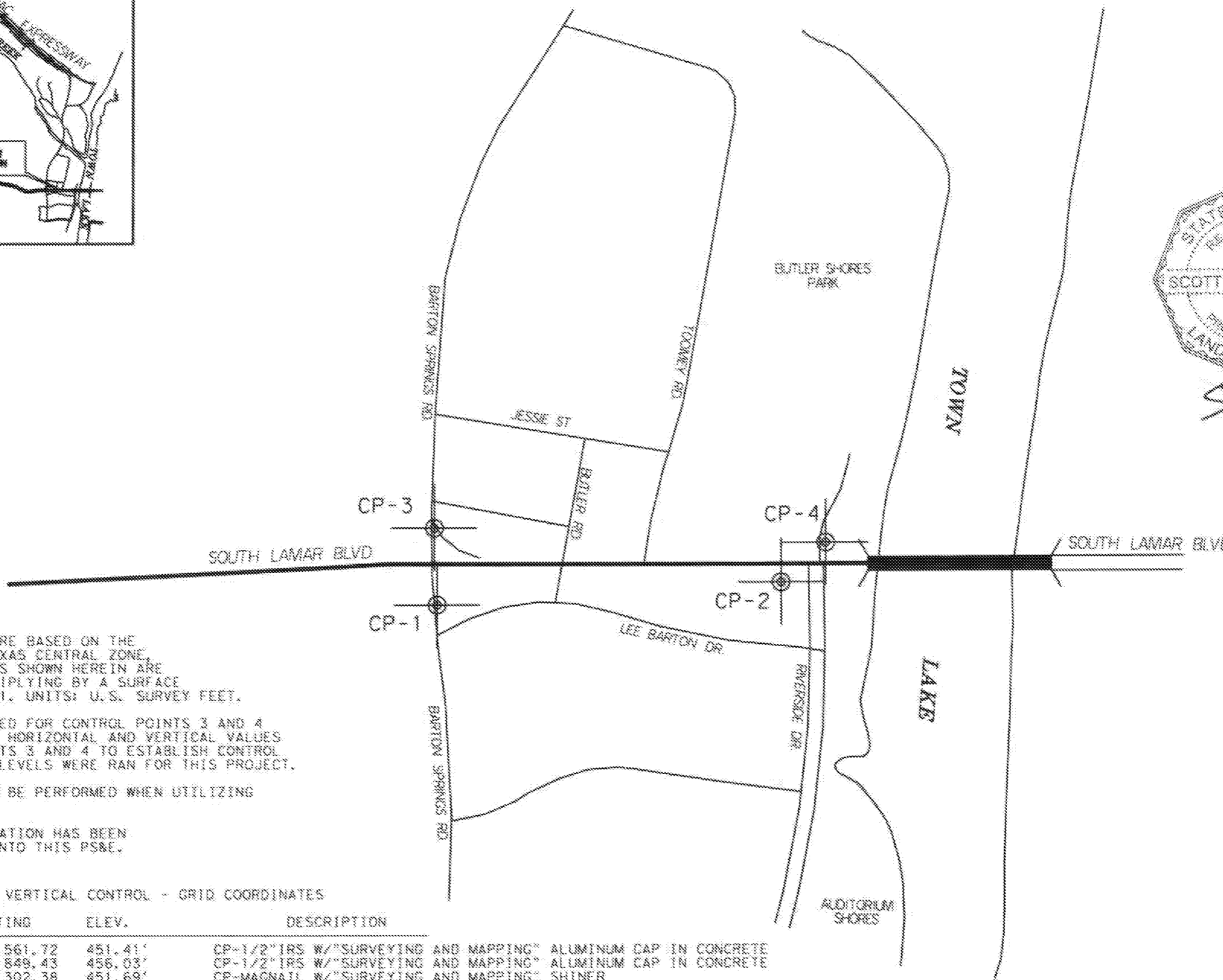


SURVEY CONTROL INDEX SHEET

NOTES



VICINITY MAP
NOT TO SCALE



S
6/23/20

NOTES:

- 1) ALL PROJECT COORDINATES ARE BASED ON THE TEXAS COORDINATE SYSTEM, TEXAS CENTRAL ZONE, NAD 83/2011. ALL COORDINATES SHOWN HEREIN ARE ADJUSTED TO SURFACE BY MULTIPLYING BY A SURFACE ADJUSTMENT FACTOR OF 1.00011. UNITS: U.S. SURVEY FEET.
- 2) STATIC SURVEY WAS CONDUCTED FOR CONTROL POINTS 3 AND 4 AND PROCESSED THROUGH CORRS. HORIZONTAL AND VERTICAL VALUES WERE HELD FROM CONTROL POINTS 3 AND 4 TO ESTABLISH CONTROL POINTS 1 AND 2. NO DIGITAL LEVELS WERE RUN FOR THIS PROJECT.
- 3) A SITE CALIBRATION SHOULD BE PERFORMED WHEN UTILIZING THE CONTROL SHOWN HEREIN.
- 4) THE SURVEY CONTROL INFORMATION HAS BEEN ACCEPTED AND INCORPORATED INTO THIS PS&E.

HORIZONTAL / VERTICAL CONTROL - GRID COORDINATES

PT	NORTHING	EASTING	ELEV.	DESCRIPTION
CP-1	10,068,046.39	3,109,561.72	451.41'	CP-1/2" IRS W/"SURVEYING AND MAPPING" ALUMINUM CAP IN CONCRETE
CP-2	10,069,216.95	3,109,849.43	456.03'	CP-1/2" IRS W/"SURVEYING AND MAPPING" ALUMINUM CAP IN CONCRETE
CP-3	10,068,116.22	3,109,302.38	451.69'	CP-MAGNAIL W/"SURVEYING AND MAPPING" SHINER
CP-4	10,069,405.78	3,109,764.14	453.43'	CP-MAGNAIL W/"SURVEYING AND MAPPING" SHINER

HORIZONTAL / VERTICAL CONTROL - GROUND COORDINATES

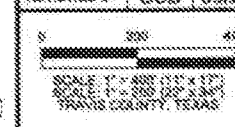
PT	NORTHING	EASTING	ELEV.	DESCRIPTION
CP-1	10,069,153.87	3,109,903.77	451.41'	CP-1/2" IRS W/"SURVEYING AND MAPPING" ALUMINUM CAP IN CONCRETE
CP-2	10,070,324.56	3,110,191.52	456.03'	CP-1/2" IRS W/"SURVEYING AND MAPPING" ALUMINUM CAP IN CONCRETE
CP-3	10,069,225.71	3,109,644.41	451.69'	CP-MAGNAIL W/"SURVEYING AND MAPPING" SHINER
CP-4	10,070,513.41	3,110,106.22	453.43'	CP-MAGNAIL W/"SURVEYING AND MAPPING" SHINER

REVISION DESCRIPTION	DATE	BY	APP

CITY OF AUSTIN, TEXAS
AUSTIN TRANSPORTATION
AIM SOUTH LAMAR C1 RIVERSIDE DR
TO BARTON SPRINGS ROAD
SURVEY CONTROL
INDEX SHEET



NOTES	NAME	DATE
SURVEY BY		
DRAWN BY	BAB	06/20
DESIGNED BY	BAB	06/20
CHECKED BY	EH	06/20
REVIEWED BY	SCB	06/20



SAM STATE AGENCY FOR METROPLIS PLANING AND DEVELOPMENT
SP-2020-0084D
7 OF 298