

EXISTING LEGEND

- FIRE HYDRANT W/ GATE VALVE
- WATERLINE W/ GATE VALVE
- WATERLINE W/ DOUBLE SERVICE
- WATERLINE W/ SINGLE SERVICE
- STW - STORM SEWER W/ MANHOLE
- STW - STORM SEWER W/ CURB INLET
- GROUND CONTOUR

PROPOSED LEGEND

- FIRE HYDRANT W/ GATE VALVE
- WATERLINE W/ GATE VALVE
- WATERLINE W/ DOUBLE SERVICE
- WATERLINE W/ SINGLE SERVICE
- WW - WASTEWATER W/ CLEANOUT
- STW - STORM SEWER W/ MANHOLE
- STW - STORM SEWER W/ CURB INLET
- GROUND CONTOUR
- OVERHEAD UTILITY
- G - GAS LINE

NOTE:
THIS IRRIGATION SYSTEM IS DESIGNED FOR RECYCLED WATER USE. ALL COMPONENTS OF THE SYSTEM ARE TO BE NP (NON-POTABLE PURPLE) COMPLIANT AS SUPPLIED BY THE MANUFACTURER. THE COMPONENTS SHALL MEET ALL TCEQ (TEXAS DEPARTMENT OF ENVIRONMENTAL QUALITY) AND LOCAL GOVERNING AUTHORITY CODES FOR RECYCLED WATER USE IN LANDSCAPE IRRIGATION SYSTEMS. SIGNAGE AS REQUIRED BY LOCAL AUTHORITY/TCEQ SHALL BE PROVIDED.

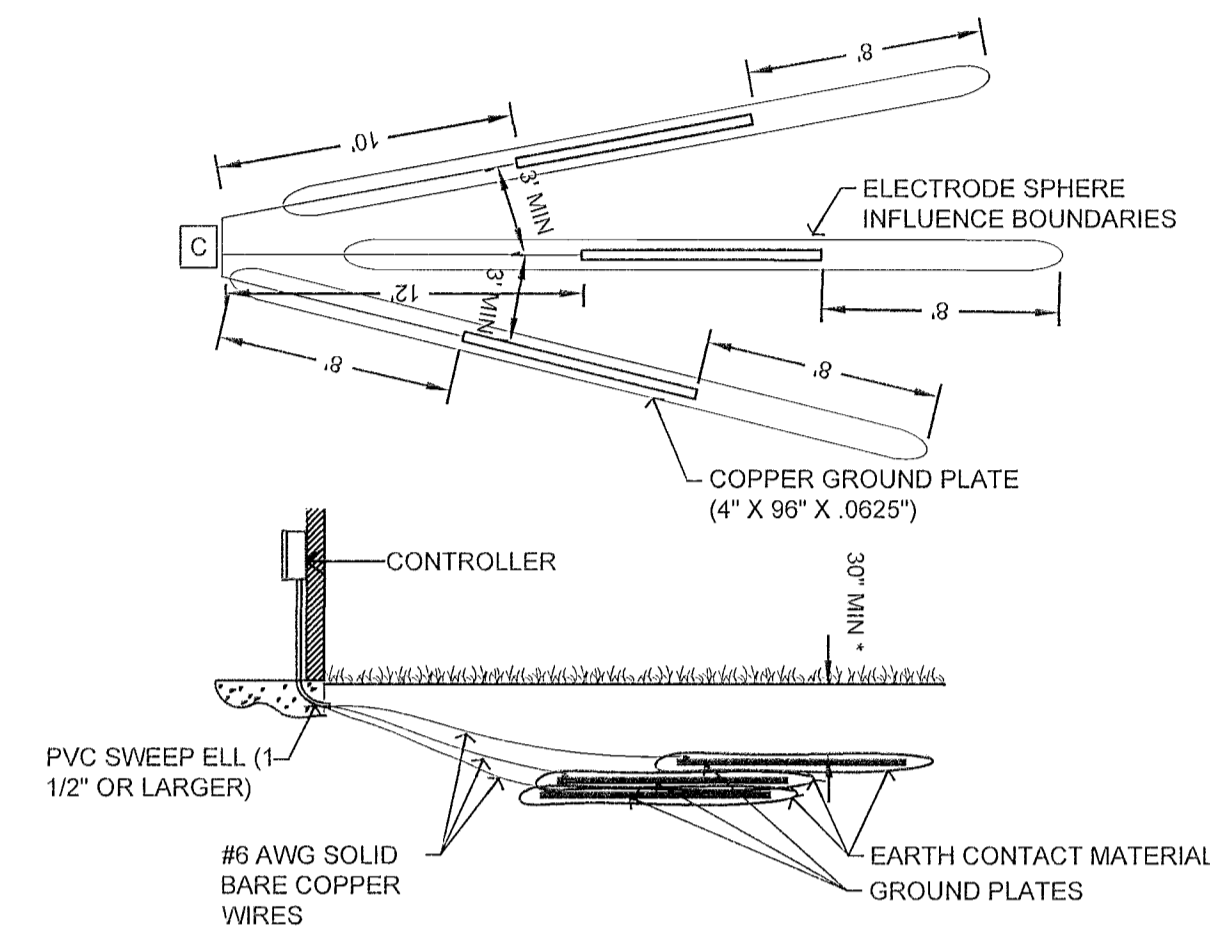
NOTE:
ALL POTABLE WATER CROSSINGS SLEEVES SHALL EXTEND 9' HORIZONTALLY FROM THE CENTER LINE OF THE POTABLE PIPE ON BOTH SIDES OF THE CROSSING AND BE PROPERLY IDENTIFIED.

NOTE:
RECYCLED CROSSINGS TO BE BELOW POTABLE WATER LINES.

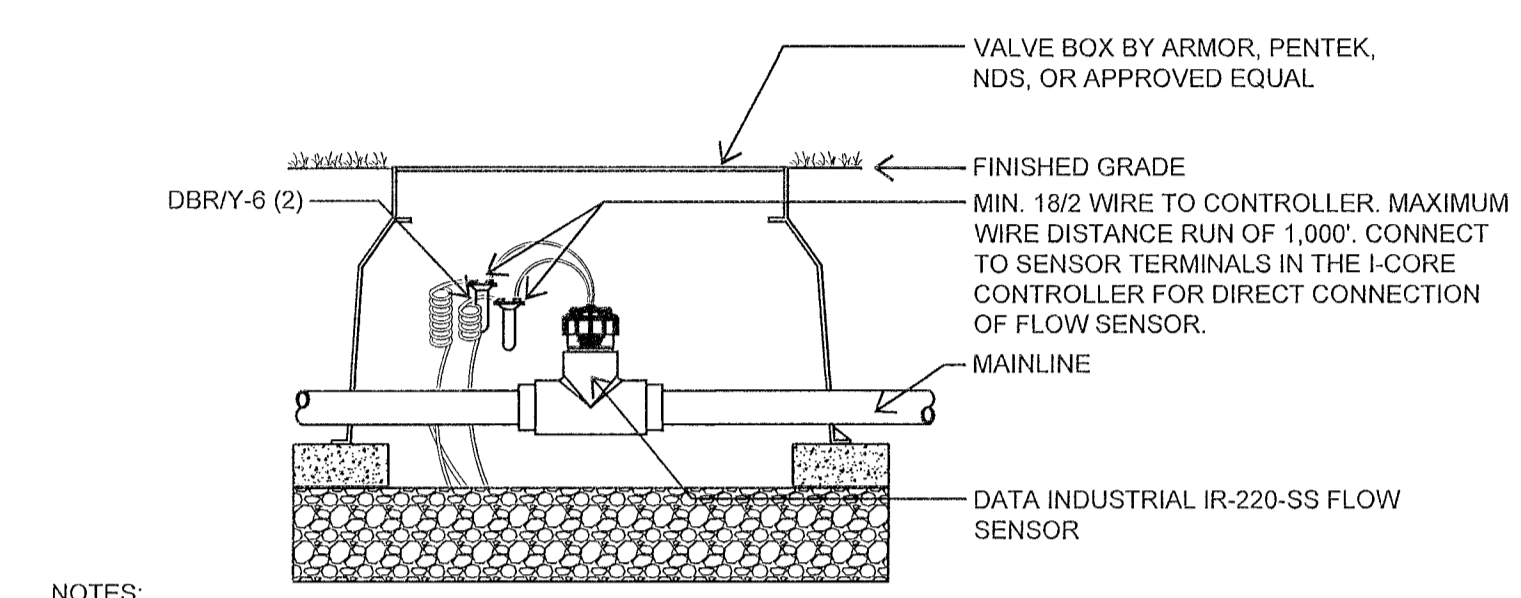
NOTE:
CONTRACTOR TO FOLLOW CHAPTER 290 SUBCHAPTER D TAC 30 FOR POTABLE WATER AND CHAPTER 210 RULES AND REGULATIONS FOR RECYCLED WATER. CONTRACTOR TO CHECK WITH AUTHORITY HAVING JURISDICTION FOR ALL PIPE LABELING AND SEPARATIONS.

NOTE:
PHOTOGRAPH AND GPS LOCATE ALL RECYCLED WATER LINES CROSSINGS UNDER DOMESTIC WATER LINES. COORDINATE DATA WITH CIVIL ENGINEER AND OWNER'S RECORDS. REFER TO POTABLE CROSSING DETAIL WHERE POSSIBLE. ADJUST MAINLINE LOCATION TO AVOID POTABLE WATER CROSSINGS.

NOTE:
THE IRRIGATION MAINLINE SHALL BE INSTALLED NO CLOSER THEN 9 FEET IN ALL DIRECTIONS FROM WATER/WASTEWATER/DRAIN COLLECTION FACILITIES. ALL SEPARATION DISTANCES ARE MEASURED FROM THE OUTSIDE SURFACE OF EACH OF THE RESPECTIVE PIECES. ADJUST IRRIGATION MAINLINE AS NEEDED TO MAINTAIN ACCEPTABLE OFFSET.



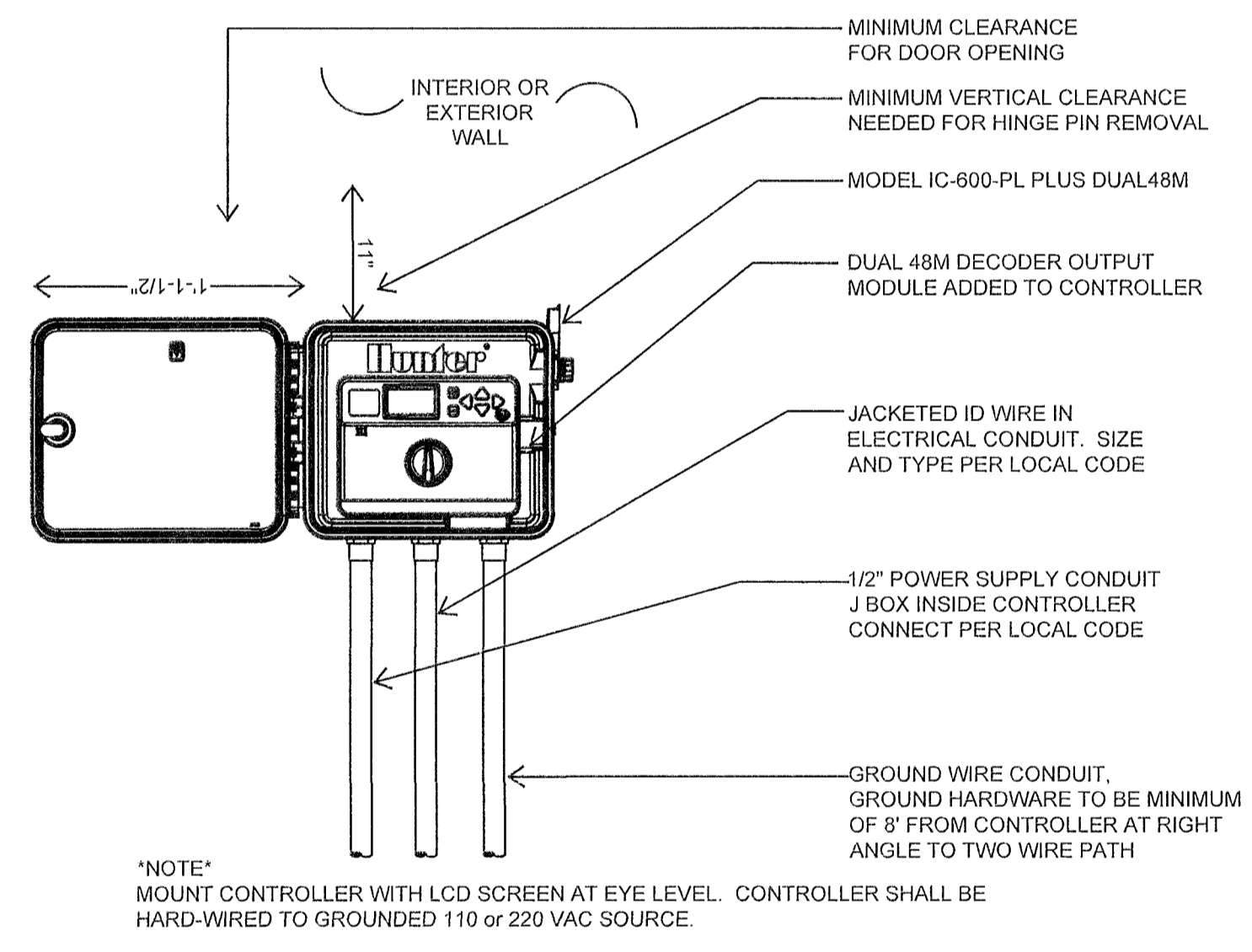
5 CONTROLLER GROUNDING



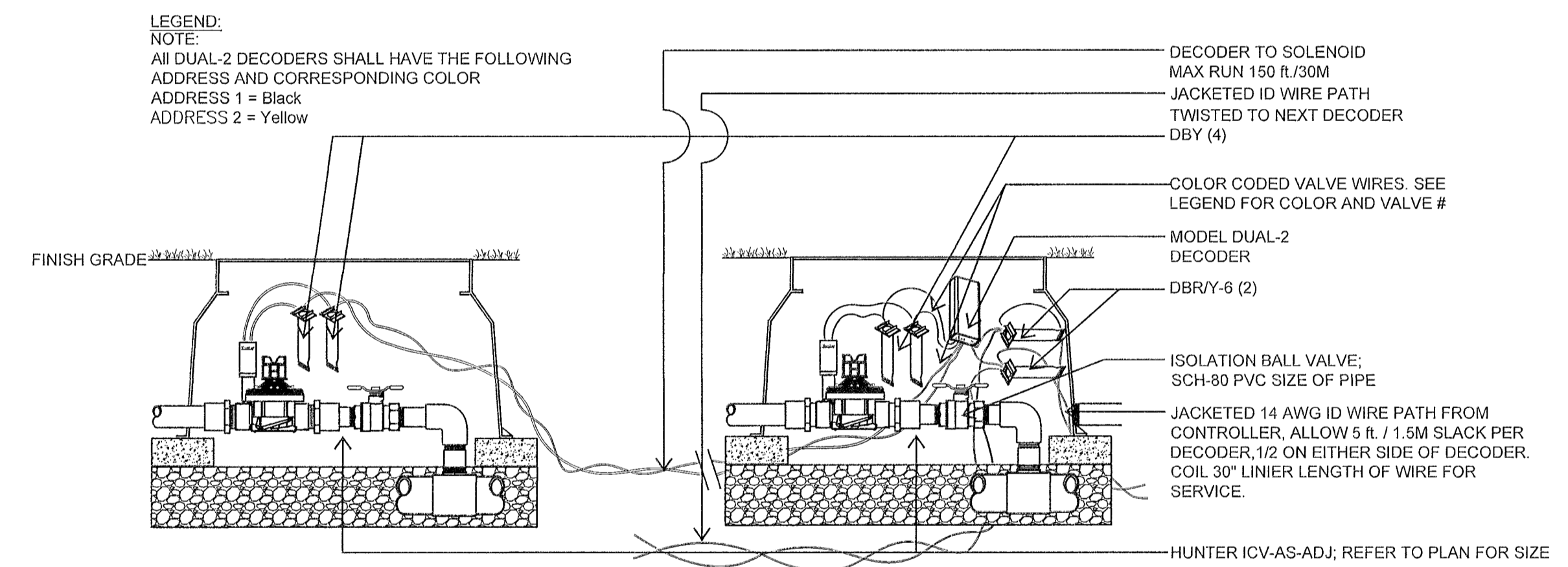
NOTES:

- FLOW SENSOR MUST BE INSTALLED WITH INSERT (TOP) POSITIONED VERTICALLY AND BODY (TEE) POSITIONED HORIZONTALLY.
- MAX. DISTANCE BETWEEN THE INTERFACE PANEL AND THE SENSOR 1,000 FT. (14 AWG MIN. WIRE SIZE).
- UPSTREAM SIDE OF SENSOR BODY MUST BE A MIN. OF 10X PIPE DIA. FROM VALVE OR NEAREST TURN/FITTING IN SYSTEM

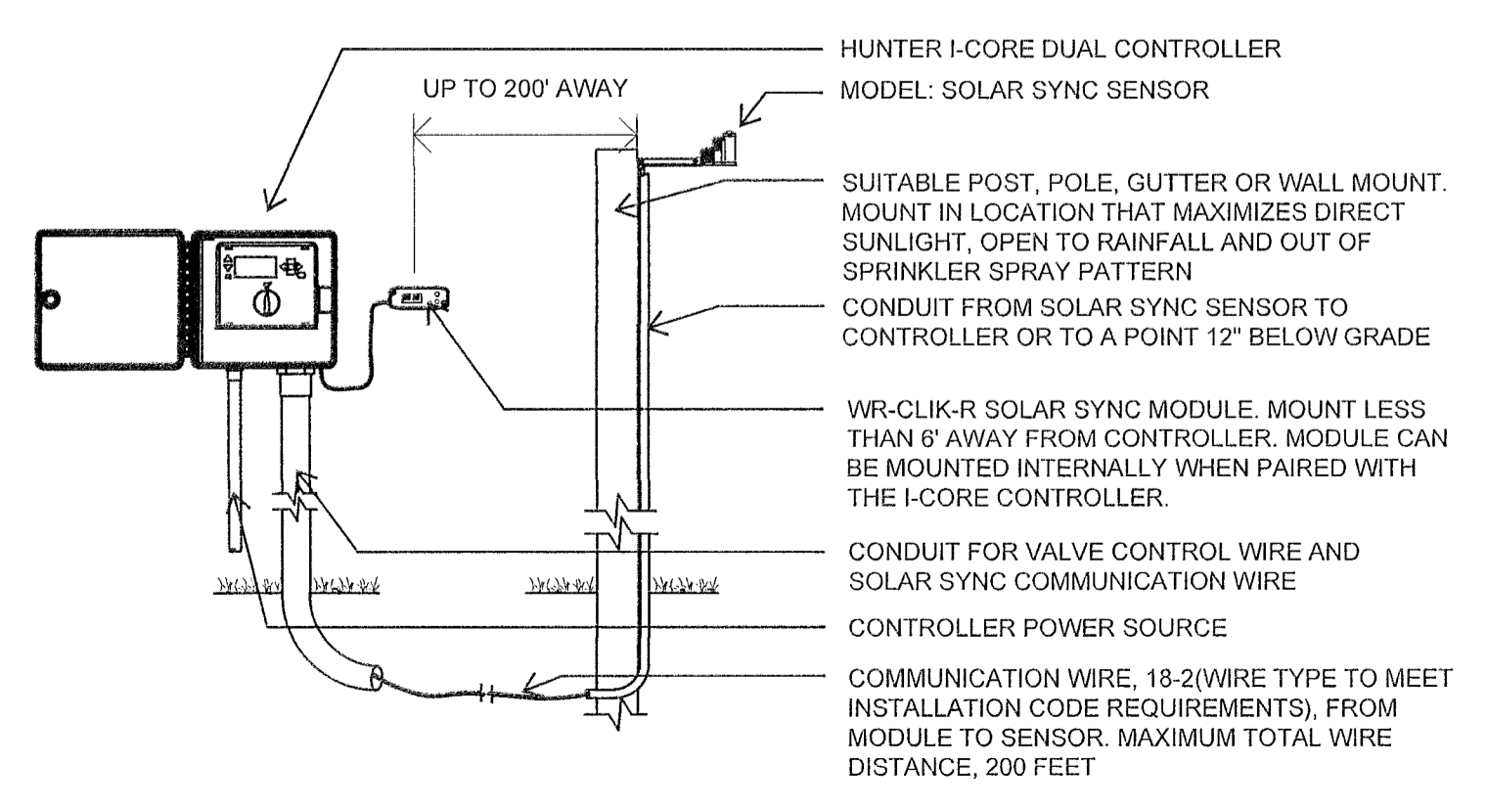
3 FLOW SENSOR



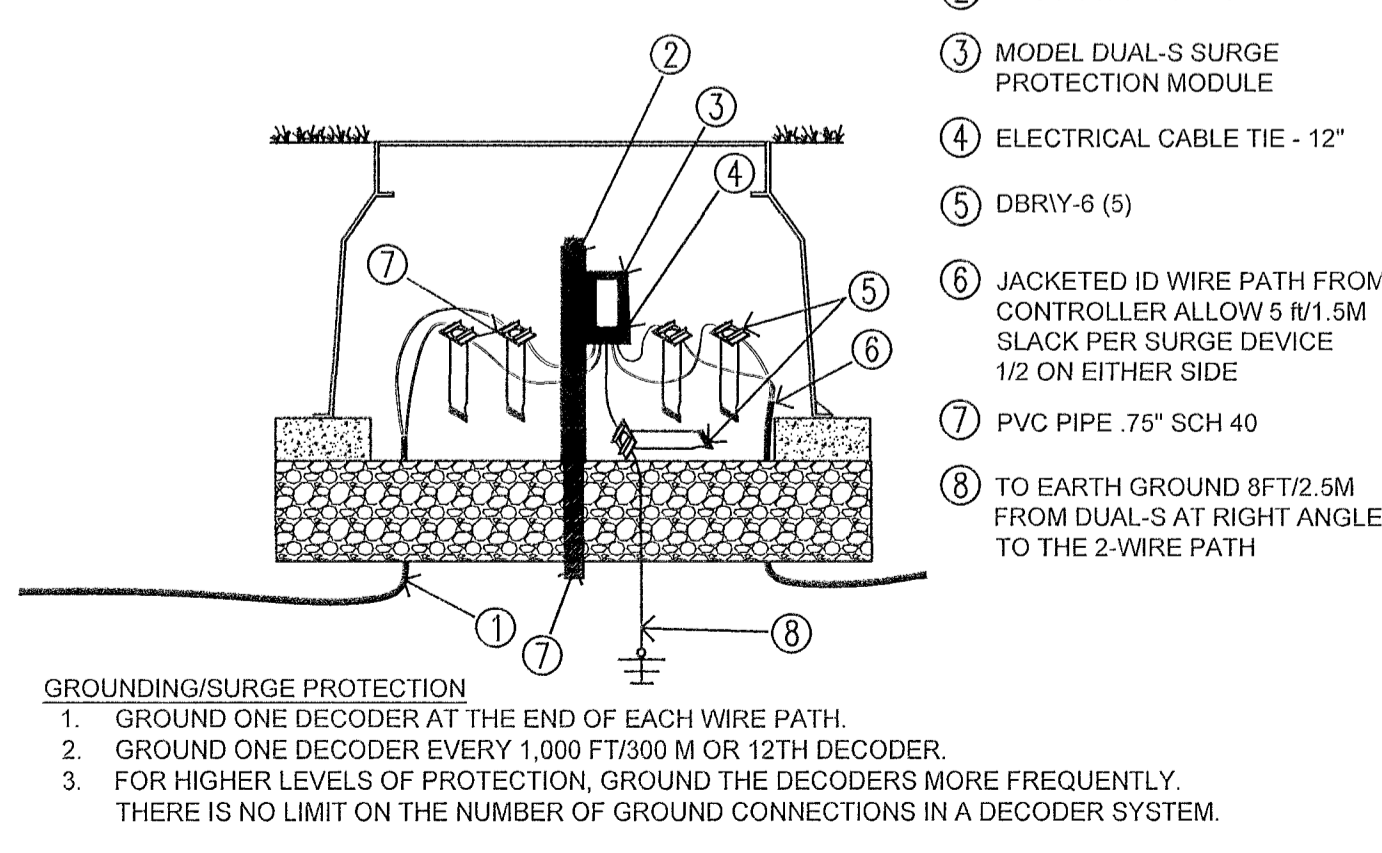
7 I-CORE DUAL CONTROLLER



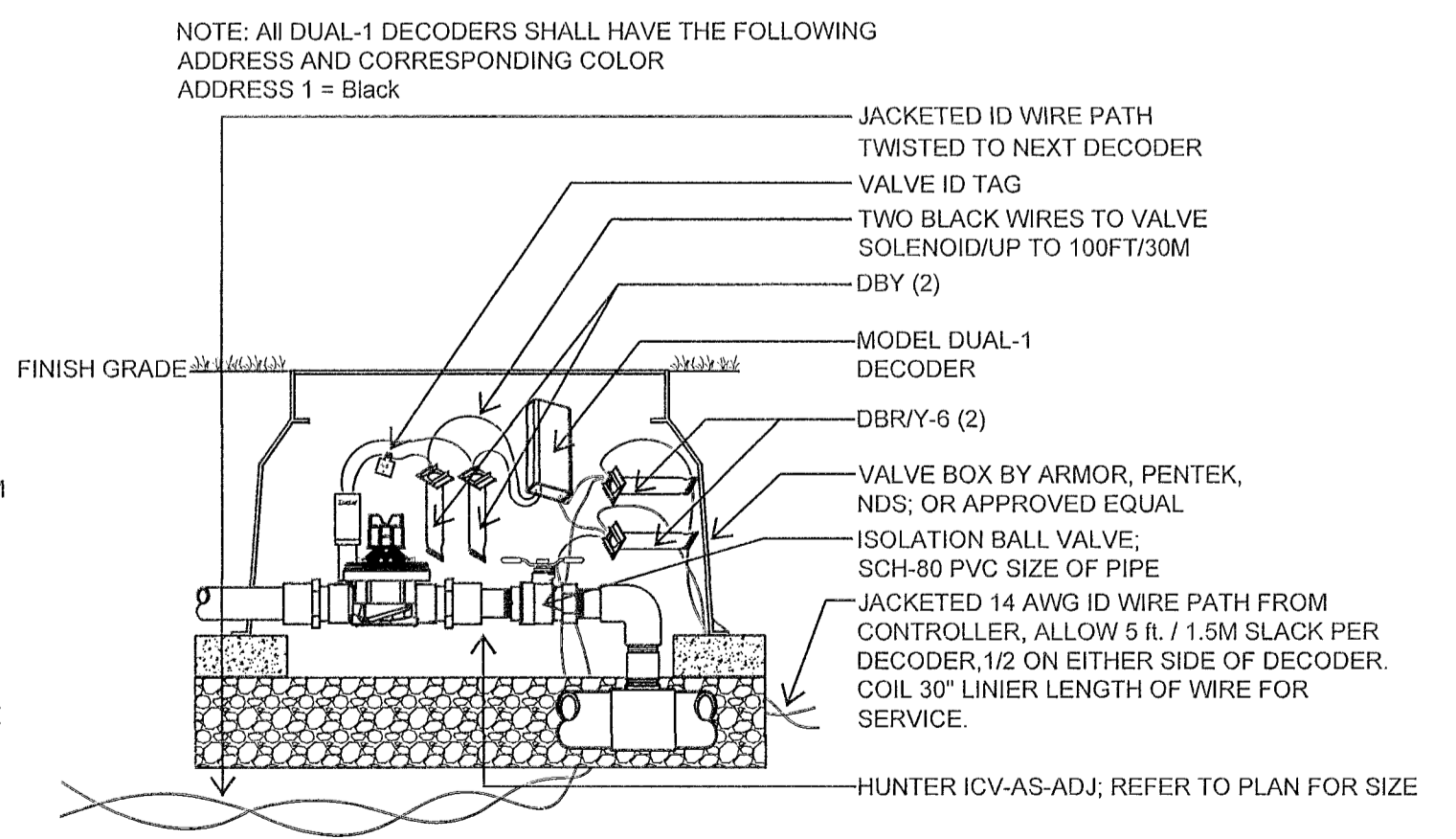
2 DUAL-2 DECODERS



6 WEATHER SENSOR



4 GROUNDING / SURGE PROTECTION



1 DUAL DECODER

NO.	DATE	REVISIONS	APPROVAL
2C	6/25/19	UPDATE IRRIGATION DETAILS	

BOULDIN CREEK COMMONS
2043 S LAMAR BLVD, AUSTIN, TX 78704

IRRIGATION DETAILS

5110 LANCASTER COURT, AUSTIN, TX 78723 FIRM REG # F12469
PHONE 512 761 6161 FAX 512 761 6167 INFO@CIVILITUDE.COM

SCALE: _____

JOB NO: A340

DGN BY: JMS

DWN BY: MAA

RVW BY: JMS

SITE PLAN APPROVAL SHEET _____ OF 31
FILE NUMBER: SP-2016-0481C APPLICATION DATE: OCTOBER 14, 2016
APPROVED BY COMMISSION ON UNDER SECTION 112 ON
CHAPTER 25-5 OF THE CITY OF AUSTIN CODE
EXPIRATION DATE (25-5-11, LDC) CASE MANAGER
PROJECT EXPIRATION DATE (ORD #970905-A) DWZ DDZ

Director, DEVELOPMENT SERVICES DEPARTMENT, CS, CS-MU-CO.
RELEASED FOR GENERAL COMPLIANCE. CS, CS-MU-CO.

Rev. 1 _____ Correction 2 _____
Rev. 2 _____ Correction 3 _____
Rev. 3 _____ Correction 3 _____

Final plat must be recorded by the Project Expiration Date, if applicable. Subsequent Site Plans which do not comply with the Code current at the time of filing, and all required Building Permits and/or a notice of construction if Building permit is not required, must also be approved prior to the Project Expiration Date.

SHEET NO. 29 OF 31

BOULDIN CREEK COMMONS - 2043 S LAMAR BLVD, AUSTIN, TX 78704

SP-2016-0481C