

Architecture Planning Interiors Research  
150 Turtle Creek Blvd; Suite 104D  
Dallas, Texas 75207  
Telephone 214 389 3816  
Fax 225 928 4906  
E-mail [info@lrk.com](mailto:info@lrk.com)

Client:

## Fairfield Residential

7301 North State Highway 161, Suite 260

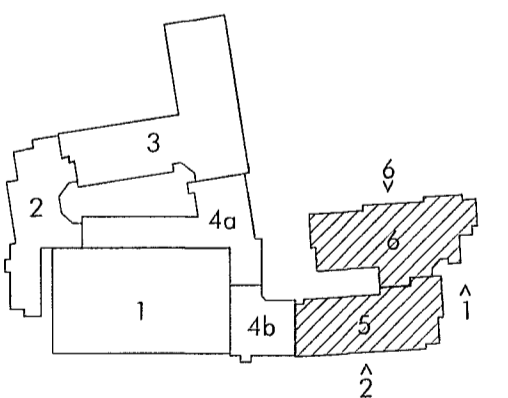
Irving, Texas 75039

## Issues and Revisions

#	Date	Issued / Revised
	05.04.18	Schematic Design Set
	06.28.18	Completeness Check Set
	08.17.18	Design Development Set
	11.30.18	85% CD Set
	04.19.19	95% CD Set
	05.01.19	Site Plan Resubmission
	07.30.19	Site Plan Resubmission 3

©2018 LRK Inc.  
Drawings, written material, and design concepts shall not be used or reproduced in whole or part in any form or format without prior written consent of LRK Inc. Do not scale drawings. Use given dimensions only. If not shown, verify correct dimensions with the Architect. Contractor shall check and verify all dimensions and conditions at job site.

Seal



Project Name:

**1515 South Lamar**

1515 South Lamar Blvd.  
Austin, Texas 78704

Drawing Name:

## EXTERIOR ELEVATIONS

59 OF 87

Drawn By: AR

Checked By: KO

A204

SP-2018-0296C