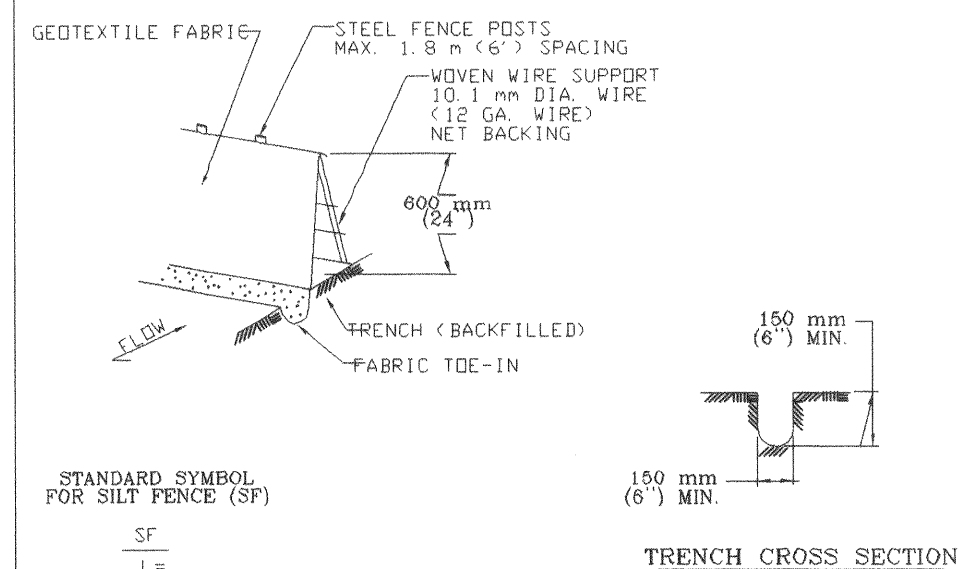


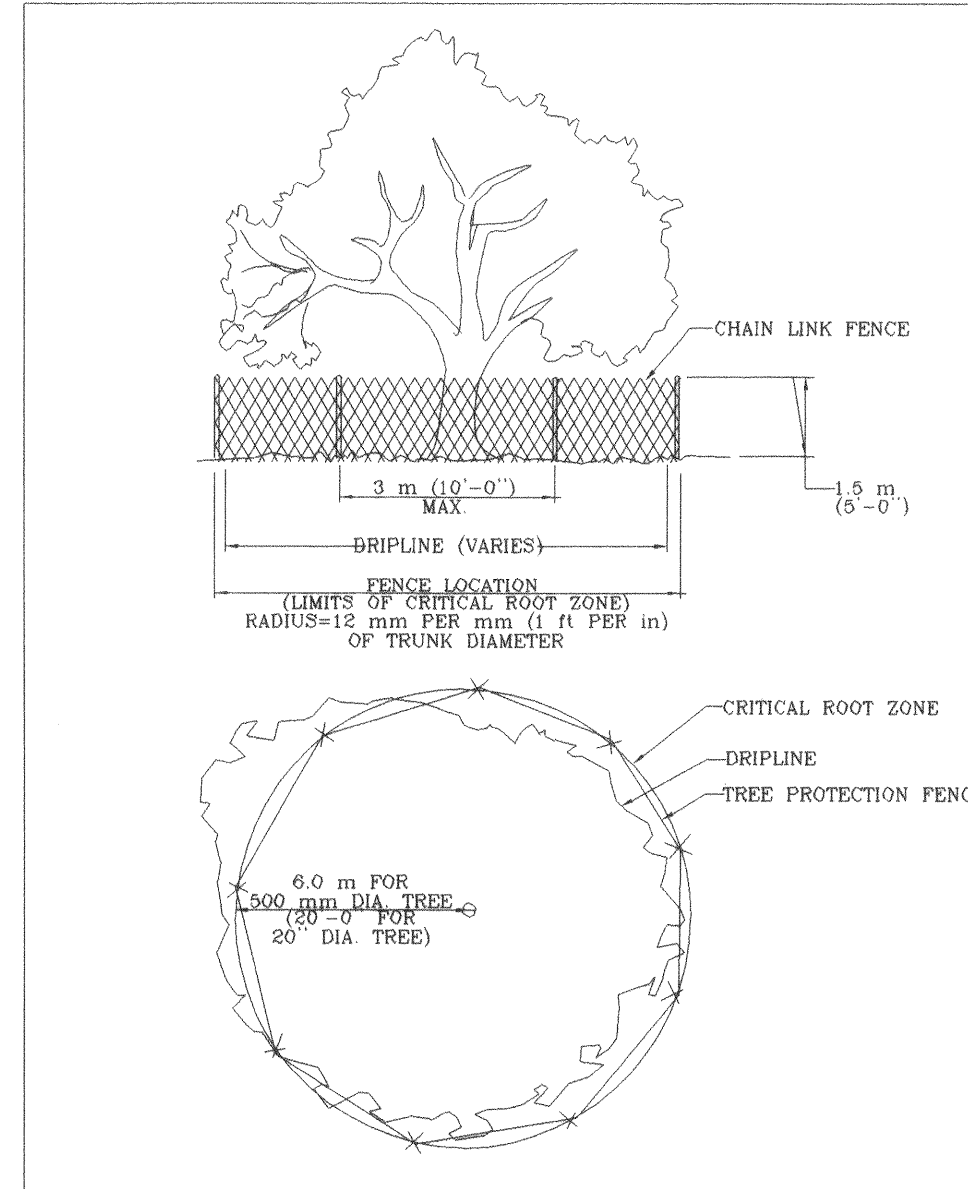
- NOTES:
- WHERE MINIMUM CLEARANCES CAUSE TRAFFIC TO DRIVE IN THE GUTTER, THE CONTRACTOR MAY SUBSTITUTE A 25 mm X 100 mm (1" X 4") BOARD SECURED WITH CONCRETE NAILS 1 m (3') O.C. NAILED INTO THE GUTTER IN LINE OF SANDBAGS TO HOLD THE FILTER DIKE IN PLACE. UPON REMOVAL, CLEAN ANY DIRTY DEBRIS FROM NAILING LOCATIONS. APPLY CHEMICAL SANDING AGENT AND APPLY NON-SHRINK GROUT FLUSH WITH SURFACE OF GUTTER.
 - A SECTION OF FILTER FABRIC SHALL BE REMOVED AS SHOWN IN THIS DETAIL OR AS DIRECTED BY THE ENGINEER OR DESIGNATED REPRESENTATIVE. FABRIC MUST BE SECURED TO WIRE BACKING WITH CLIPS OR HOG RINGS AT THIS LOCATION.
 - DAILY INSPECTION SHALL BE MADE BY THE CONTRACTOR AND SILT ACCUMULATION MUST BE REMOVED WHEN DEPTH REACHES 50 mm (2").
 - CONTRACTOR SHALL MONITOR THE PERFORMANCE OF INLET PROTECTION DURING EACH RAINFALL EVENT AND IMMEDIATELY REMOVE THE INLET PROTECTIONS IF THE STORM-WATER BEGINS TO OVERTOP THE CURB.
 - INLET PROTECTIONS SHALL BE REMOVED AS SOON AS THE SOURCE OF SEDIMENT IS STABILIZED.

CITY OF AUSTIN
WATERSHED PROTECTION DEPARTMENT
RECORD COPY SIGNED BY J. PATRICK MURPHY 2/21/01
THE ARCHITECT/ENGINEER ASSUMES RESPONSIBILITY FOR APPROPRIATE USE OF THIS STANDARD.
STANDARD NO. 628S-2

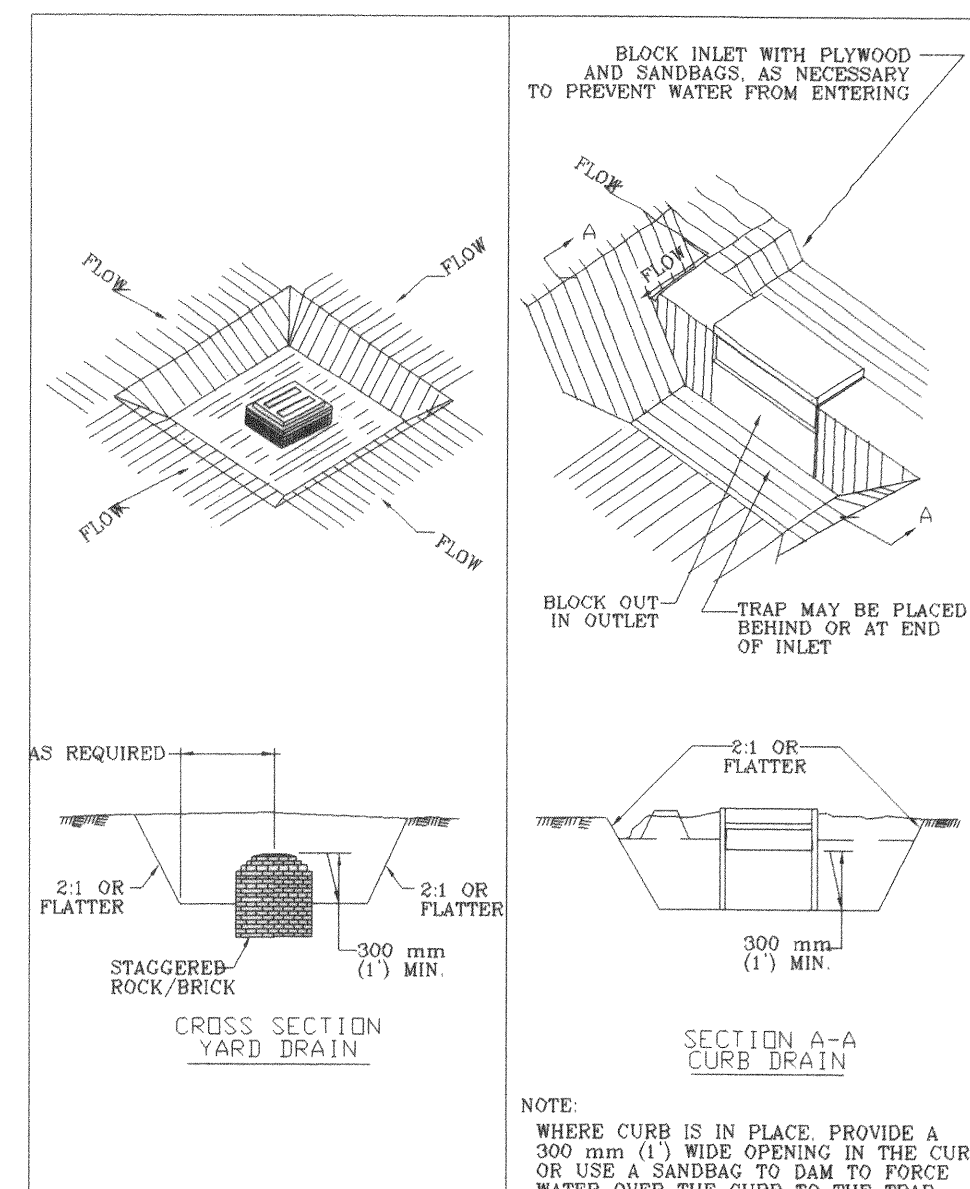


- NOTES:
- STEEL POSTS WHICH SUPPORT THE SILT FENCE SHALL BE INSTALLED ON A SLIGHT ANGLE TOWARD THE ANTICIPATED RUNOFF SOURCE. POST MUST BE EMBEDDED A MINIMUM OF 300 mm (1').
 - THE TOE OF THE SILT FENCE SHALL BE TRENCHED IN WITH A SPADE OR MECHANICAL TRENCHER, SO THAT THE DOWNSLOPE FACE OF THE TRENCH IS FLAT AND PERPENDICULAR TO THE LINE OF FLOW. WHERE FENCE CAN NOT BE TRENCHED INTO THE SURFACE (E.G. PAVEMENT), THE FABRIC FLAP SHALL BE WEIGHTED DOWN WITH WASHED GRAVEL ON UPHILL SIDE TO PREVENT FLOW UNDER FENCE.
 - THE TRENCH MUST BE A MINIMUM OF 150 mm (6 inches) DEEP AND 150 mm (6 inches) WIDE TO ALLOW FOR THE SILT FENCE FABRIC TO BE LAID IN THE AND BACKFILLED WITH COMPACTED MATERIAL.
 - SILT FENCE SHOULD BE SECURELY FASTENED TO EACH STEEL SUPPORT POST OR TO WOVEN WIRE, WHICH IS IN TURN ATTACHED TO THE STEEL FENCE POST.
 - INSPECTION SHALL BE MADE WEEKLY OR AFTER EACH RAINFALL EVENT AND REPAIR OR REPLACEMENT SHALL BE MADE PROMPTLY AS NEEDED.
 - SILT FENCE SHALL BE REMOVED WHEN THE SITE IS COMPLETELY STABILIZED SO AS NOT TO BLOCK OR IMPEDE STORM FLOW OR DRAINAGE.
 - ACCUMULATED SILT SHALL BE REMOVED WHEN IT REACHES A DEPTH OF 150 mm (6 inches). THE SILT SHALL BE DISPOSED OF ON AN APPROVED SITE AND IN SUCH MANNER THAT WILL NOT CONTRIBUTE TO ADDITIONAL SILTATION.

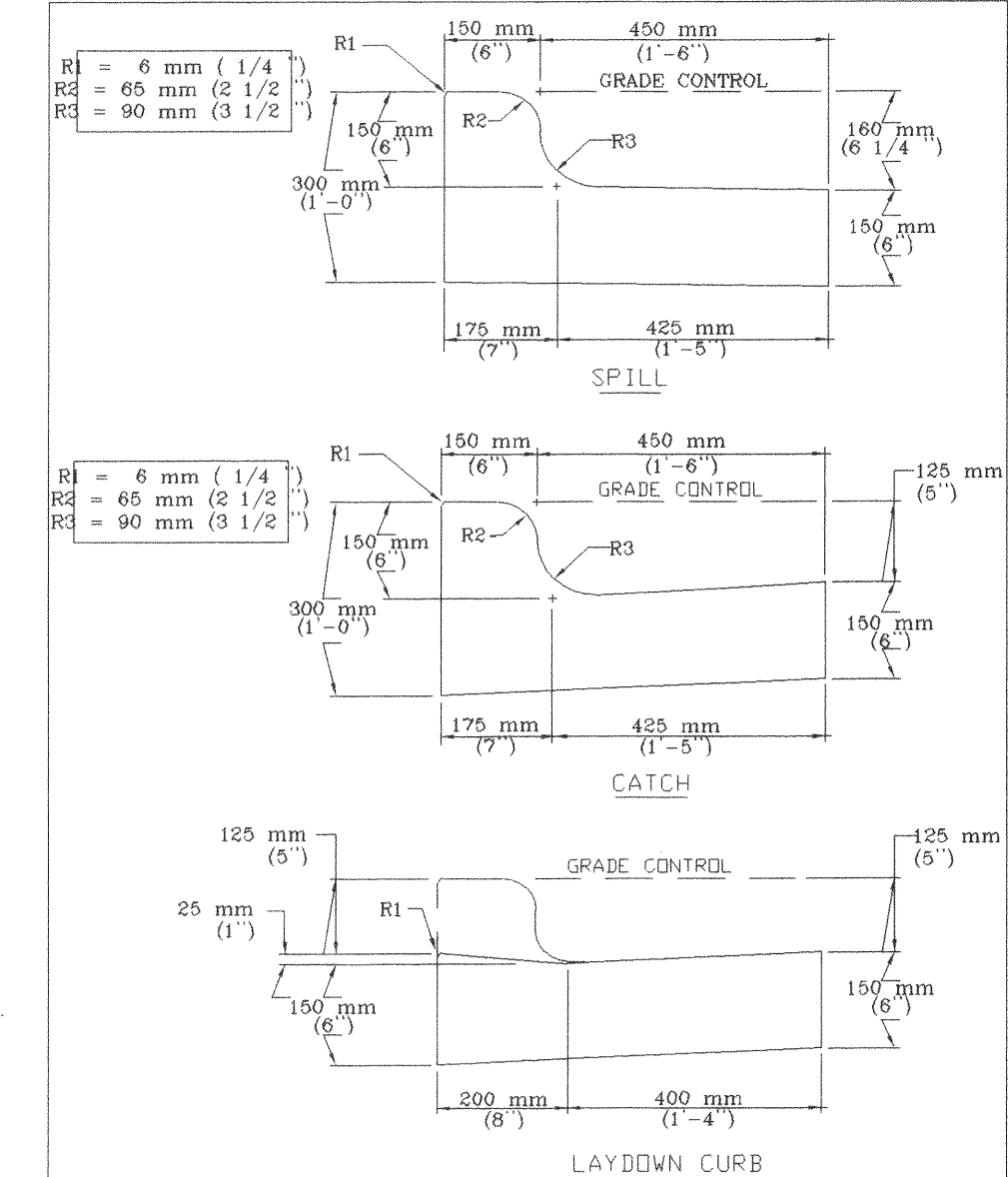
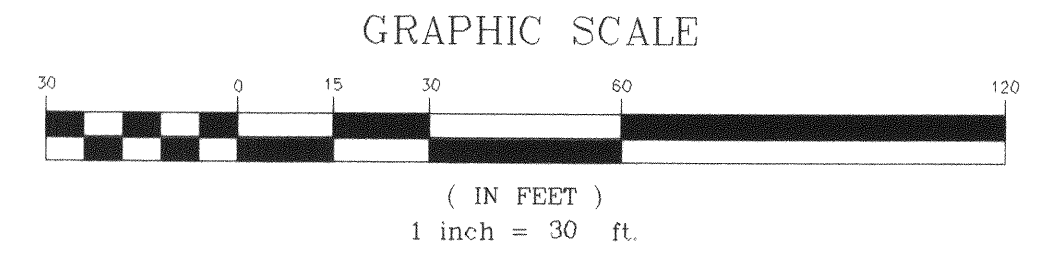
CITY OF AUSTIN
WATERSHED PROTECTION DEPARTMENT
RECORD COPY SIGNED BY J. PATRICK MURPHY 5/23/00
THE ARCHITECT/ENGINEER ASSUMES RESPONSIBILITY FOR APPROPRIATE USE OF THIS STANDARD.
STANDARD NO. 642S-1



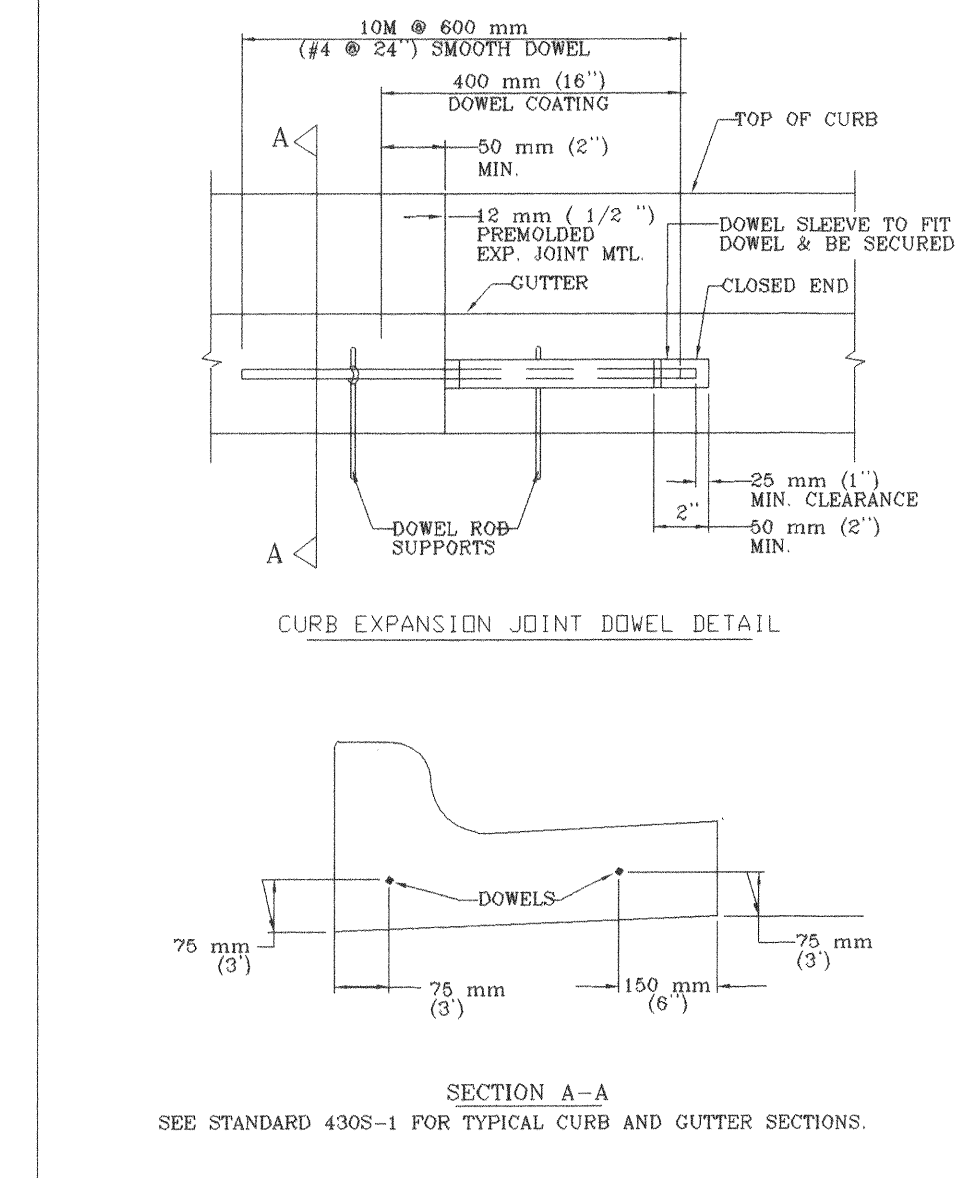
CITY OF AUSTIN
WATERSHED PROTECTION DEPARTMENT
RECORD COPY SIGNED BY J. PATRICK MURPHY 11/16/99
THE ARCHITECT/ENGINEER ASSUMES RESPONSIBILITY FOR APPROPRIATE USE OF THIS STANDARD.
STANDARD NO. 610S-2



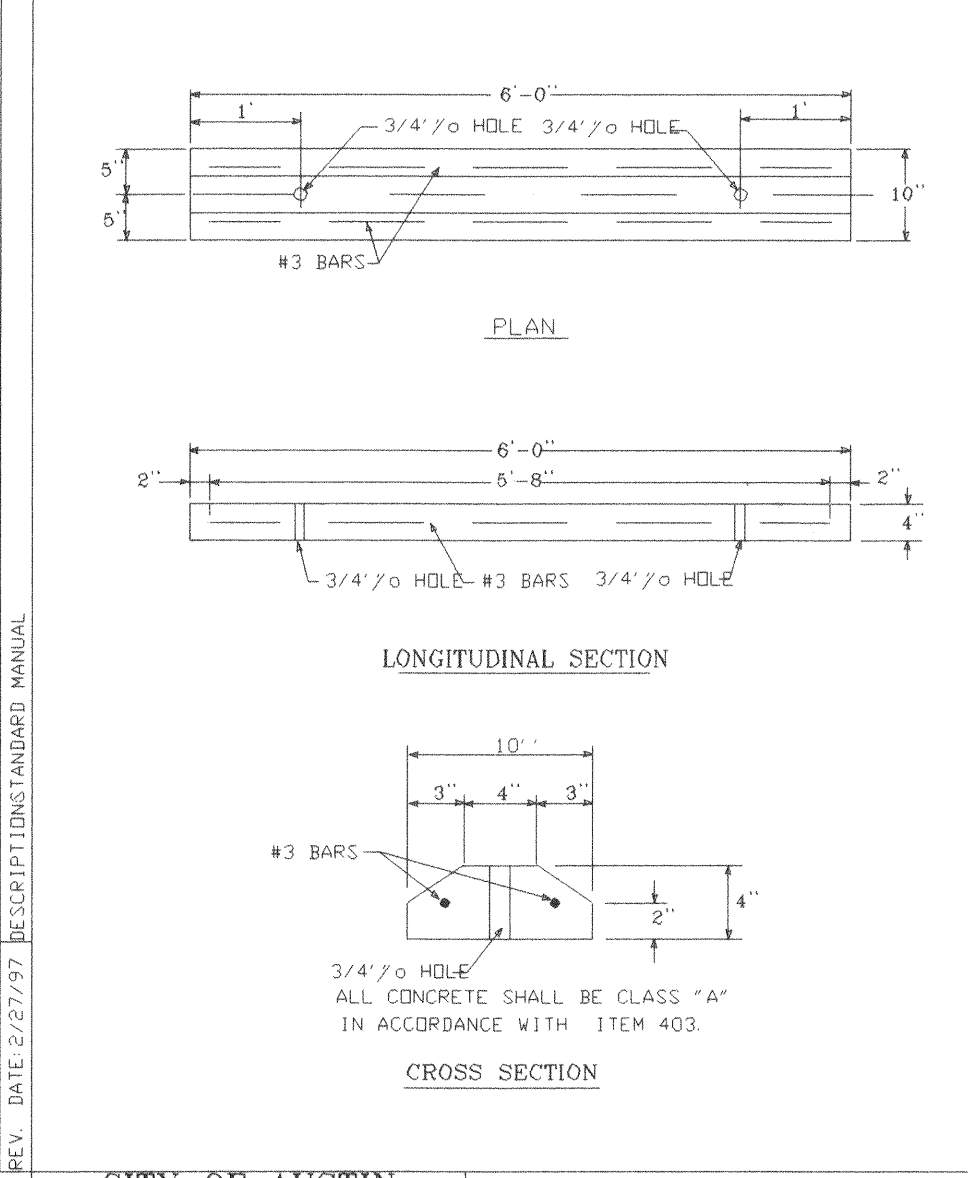
CITY OF AUSTIN
WATERSHED PROTECTION DEPARTMENT
RECORD COPY SIGNED BY J. PATRICK MURPHY 3/27/00
THE ARCHITECT/ENGINEER ASSUMES RESPONSIBILITY FOR APPROPRIATE USE OF THIS STANDARD.
STANDARD NO. 632S-1



CITY OF AUSTIN
DEPARTMENT OF PUBLIC WORKS AND TRANSPORTATION
RECORD COPY SIGNED BY LINDO RIVERA 9/29/99
THE ARCHITECT/ENGINEER ASSUMES RESPONSIBILITY FOR APPROPRIATE USE OF THIS STANDARD.
STANDARD NO. 430S-1



CITY OF AUSTIN
DEPARTMENT OF PUBLIC WORKS AND TRANSPORTATION
RECORD COPY SIGNED BY LINDO RIVERA 9/29/99
THE ARCHITECT/ENGINEER ASSUMES RESPONSIBILITY FOR APPROPRIATE USE OF THIS STANDARD.
STANDARD NO. 430S-3



CITY OF AUSTIN
DEPARTMENT OF PUBLIC WORKS AND TRANSPORTATION
RECORD COPY SIGNED BY LINDO RIVERA 07/15/99
THE ARCHITECT/ENGINEER ASSUMES RESPONSIBILITY FOR APPROPRIATE USE OF THIS STANDARD.
APPROVED DATE INITIAL LLM
STANDARD NO. 439-1

REV	DATE	BY	APP	COMMENT

SCALE: 1" = 30'
DATE: OCTOBER, 2003
DRAWN BY: KEW
PROJECT MANAGER: KENNY WATKINS, P.E.

PREPARED FOR:
DOLG HARBISON
AUSTIN, TEXAS 78753
PHONE: 512-263-9174
FAX: 512-443-3355

Bleyl & Associates
Project Engineering & Management

1203 NORTH CUERNAVACA
AUSTIN, TEXAS 78753
512-263-9174 PHONE
512-263-9179 FAX

CONSTRUCTION DETAILS

HARBISON AUTO SALES
2027 SOUTH LAMAR BLVD.
AUSTIN, TEXAS

RELEASED FOR:
GENERAL COMPLIANCE: 2.6.04 ZONING: CS-CO

Rev. 1 Correction 1
Rev. 2 Correction 2
Rev. 3 Correction 3

RELEASE OF THIS APPLICATION DOES NOT CONSTITUTE A VERIFICATION OF ALL DATA. INFORMATION AND CALCULATIONS SUPPLIED BY THE APPLICANT. THE ENGINEER OF RECORD IS SOLELY RESPONSIBLE FOR THE COMPLETENESS, ACCURACY AND ADEQUACY OF THEIR SUBMITTAL, WHETHER OR NOT THE APPLICATION IS REVIEWED FOR CODE COMPLIANCE BY CITY ENGINEERS.

PROJECT NUMBER
5005

FILE NAME: BASE-5005.DWG
SHEET: **9** OF: 9

ALL RESPONSIBILITY FOR THE ADEQUACY OF THESE PLANS REMAINS WITH THE ENGINEER WHO PREPARED THEM. IN APPROVING THESE PLANS, THE CITY OF AUSTIN MUST RELY UPON THE ADEQUACY OF THE WORK OF THE DESIGN ENGINEER.

REVIEWED BY: _____ DEVELOPMENT REVIEW AND INSPECTION DEPARTMENT DATE: _____

SITE PLAN RELEASE Sheet 9 of 9
FILE NUMBER: 02-2464 EXPIRATION DATE: 2.6.07
CASE MANAGER: C. Watson APPLICATION DATE: 4.6.02
REVIEWED FOR GENERAL COMPLIANCE ON: 7.6.04
APPROVED BY PLANNING COMMISSION ON: _____
APPROVED BY CITY COUNCIL ON: _____
Uddell Section _____ of Chapter 255 of the Austin City Code.

Signing for Director, Watershed Protection & Development Review Department
RELEASED FOR:
GENERAL COMPLIANCE: 2.6.04 ZONING: CS-CO