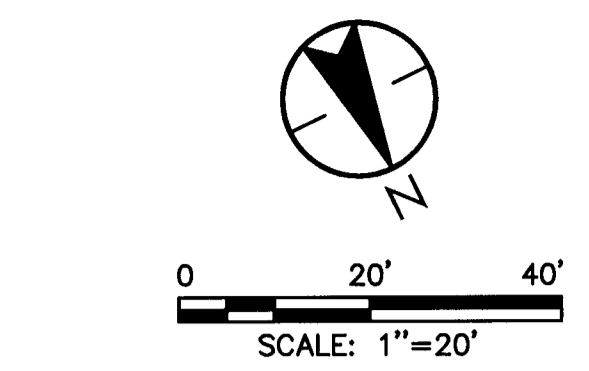
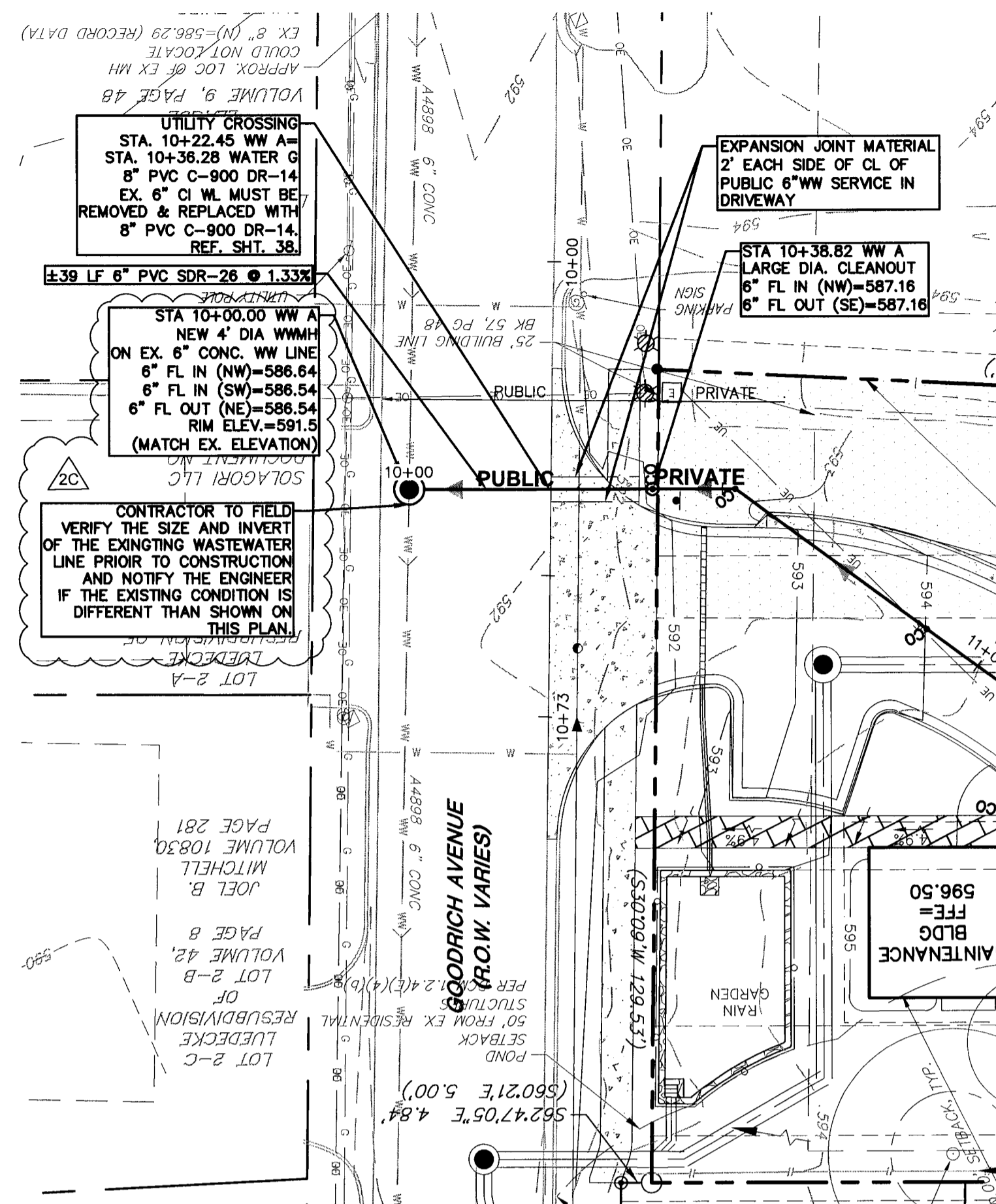


**WASTEWATER A
STA 10+00**

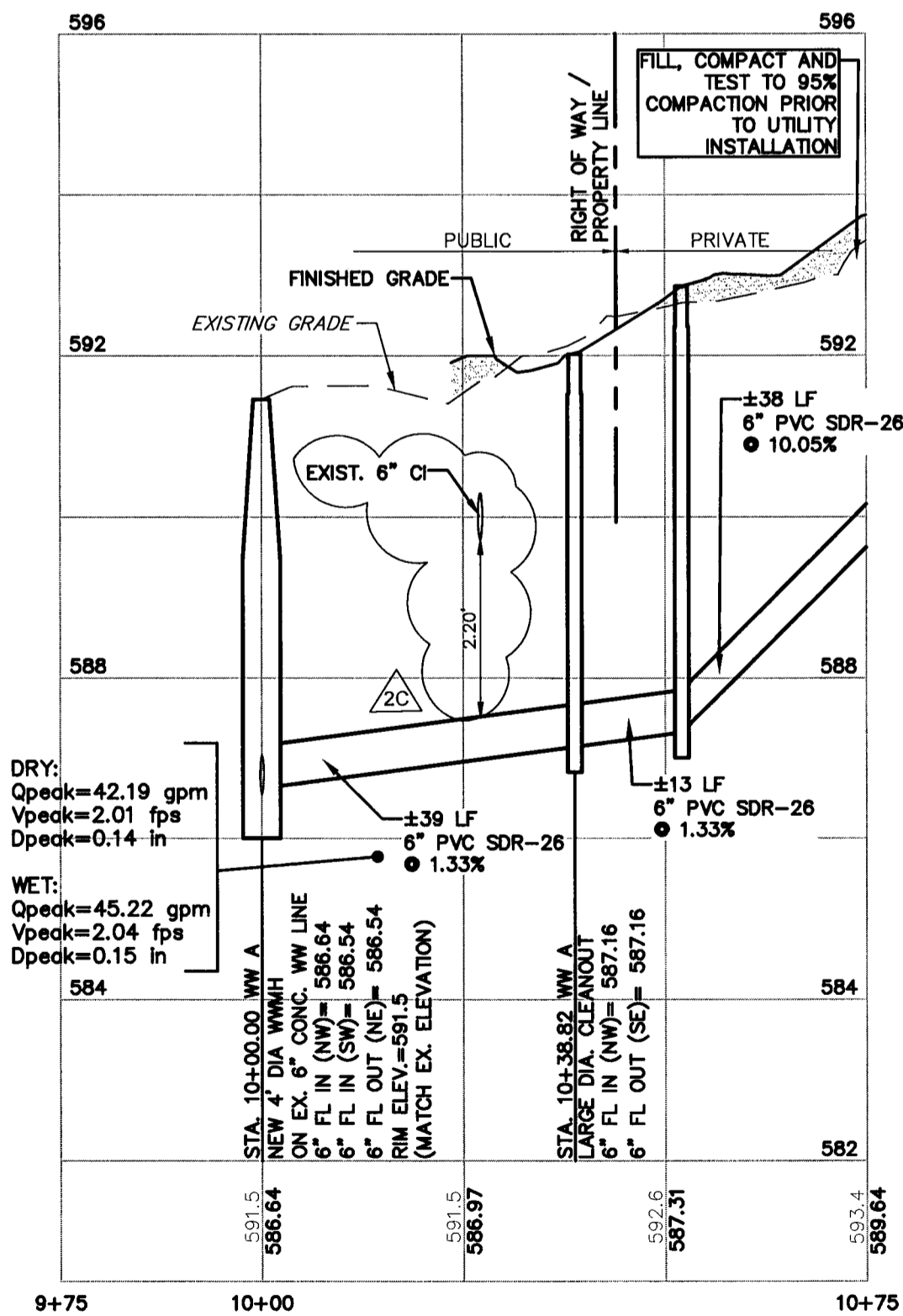
SCALE: 1"=5'



LEGEND		
EXISTING	PROPOSED	DESCRIPTION
---	---	PROPERTY LINE / (R.O.W.) LINE
---	---	RECORD INFORMATION
---	---	LIGHT POLE
---	---	POWER POLE
---	---	DOWN GUY
---	---	TRANSFORMER (SIZE VARIES)
---	---	GENERATOR (SIZE VARIES)
---	---	FIRE HYDRANT
---	---	WATER VALVE
---	---	WATER METER
---	---	WATER METER VAULT (SIZE VARIES)
---	---	CABLE TV RISER
---	---	ELECTRIC BOX
---	---	ELECTRIC METER
---	---	GAS METER
---	---	GAS VALVE
---	---	GRATE INLET
---	---	CURB INLET (SIZE VARIES)
---	---	STORMSEWER LINE
---	---	WATER LINE
---	---	FIRE LINE
---	---	WASTEWATER LINE
---	---	GAS LINE
---	---	UNDERGROUND ELECTRIC LINE
---	---	OVERHEAD ELECTRIC
---	---	UNDERGROUND TELEPHONE
---	---	UNDERGROUND CABLE AND INTERNET
---	---	TELECOMMUNICATIONS LINE
---	---	ELECTRIC MANHOLE (SIZE VARIES)
---	---	WASTEWATER MANHOLE (SIZE VARIES)
---	---	STORMSEWER MANHOLE (SIZE VARIES)
---	---	WASTEWATER CLEANOUT
---	---	WASTEWATER FLOW DIRECTION
---	---	CURB & GUTTER
---	---	CONCRETE SIDEWALKS
---	---	WALL
---	---	FINISH FLOOR ELEVATION
---	---	CONTOUR
---	---	TREE TO BE SAVED
---	---	1/2 CRITICAL ROOT ZONE
---	---	HERITAGE TREE
---	---	1/2 CRITICAL ROOT ZONE

WATER & WASTEWATER NOTES

- WATER LINE A: WATER LINE SHALL BE DUCTILE IRON PIPE COMPLYING WITH AWWA C151. LINES 12" DIAMETER AND SMALLER SHALL BE PRESSURE CLASS 300. LINES GREATER THAN 12" DIAMETER SHALL BE PRESSURE CLASS 250.
- WATER LINE F:
 - MATERIAL MUST COMPLY WITH AWWA C900 PRESSURE CLASS 305 (DR14) AND BE RATED ABOVE DESIGN PRESSURE. ACCEPTABLE SIZES ARE 4", 6", 8", 12" AND 16".
 - AWWA C900 WATER PIPE SHALL NOT BE USED IN EASEMENTS ON PRIVATE PROPERTY AND SHALL NOT BE USED FOR WASTEWATER FORCE MAINS OR TO CONVEY ANYTHING BUT POTABLE WATER.
 - CHANGES IN DIRECTION OF PVC PIPE SHALL ONLY BE BY USE OF FITTINGS OR BY DEFLECTING STRAIGHT PIPE SECTIONS AT JOINTS.
 - LONGITUDINAL BENDING OF PIPE IS NOT ALLOWED.
 - DEFLECTION OF PIPE AT FITTINGS IS NOT ALLOWED.
 - DEFLECTION OF STRAIGHT PIPE SECTIONS SHALL NOT EXCEED 1 DEGREE AT EACH JOINT (EVEN IF JOINT RESTRAINT DEVICES ARE INSTALLED), WHICH CORRESPONDS TO THE FOLLOWING OFFSET IN PIPE ALIGNMENT: LENGTH OF PIPE, 20' - OFFSET 4" MAXIMUM. ALLOWABLE RADIUS OF CURVATURE IS 1,146' MINIMUM.
- ALL GATE VALVES FOR FIRE HYDRANT ASSEMBLIES SHALL BE LOCATED IN THE PAVEMENT IN ACCORDANCE WITH CITY OF AUSTIN STANDARD DETAIL 1011-W-02. RESTRAIN THE GATE VALVE TO THE TIE.
- GATE VALVE RISERS SHALL NOT BE PLACED IN CURB/GUTTER BUT SHALL EITHER BE PLACED IN STREET (WHERE FEASIBLE) OR BEHIND CURB.
- AT ALL CROSSINGS WITH UNDERGROUND UTILITIES AND STORM SEWERS, PIPE LENGTHS SHALL BE CENTERED AT CROSSING IN ORDER TO KEEP PIPE JOINTS AS FAR AS POSSIBLE FROM CENTER POINT OF CROSSING.
- CONTRACTOR SHALL TEST WATERLINES TO THE NEAREST CUTOFF VALVE AT ALL CONNECTIONS.
- ALL WASTEWATER SERVICE CONNECTIONS SHALL USE SEWER FITTINGS PER SPL WW-227B & 227C.
- ALL GRAVITY WASTEWATER PIPE AND SERVICES SHALL BE GREEN-COLORED ASTM D3034 SDR-26 PVC.
- DETECTABLE TRACER TAPE PER SPL WW-597 SPECIFICATION AND INSTALLATION SHALL BE UTILIZED.
- PRESSURE TESTING PER CITY OF AUSTIN SPECIFICATIONS.
- ALL WASTEWATER MANHOLES WITHIN 9' OF WATER OR RECLAIMED WATER LINES SHALL BE MADE WATERTIGHT. (COA DETAIL 506S-6)
- NEW PIPE CONNECTIONS TO EXISTING MANHOLES SHALL PROVIDE A MINIMUM OF 12" CLEARANCE BETWEEN THE EXISTING PIPE INSIDE DIAMETER AND THE NEW PIPE INSIDE DIAMETER, MEASURED ON THE INSIDE SURFACE OF THE MANHOLE PER UCM SECTION 2.5.4.0.7, NOTE 3.
- CONTRACTOR SHALL REMOVE ABANDONED INFRASTRUCTURE THAT CONFLICTS WITH PROPOSED PIPELINE AS NEEDED, PER LDC SECTION 2.8. ABANDONMENT REQUIREMENTS: CONTRACTOR TO NOTE THAT SOME EXISTING WATER AND WASTEWATER LINES HAVE BEEN PREVIOUSLY ABANDONED AND POTENTIALLY PAVED OVER. WASTEWATER MANHOLES AND WATERLINE APERTURANCES HAVE BEEN ABANDONED IN PLACE AND ARE NO LONGER FUNCTIONING IN MULTIPLE LOCATIONS. CONTRACTOR SHALL REMOVE ABANDONED INFRASTRUCTURE THAT CONFLICTS WITH PROPOSED PIPELINE AS NEEDED AND PAY SPECIAL ATTENTION TO VERIFY INFRASTRUCTURE AS ABANDONED OR FUNCTIONING PRIOR TO ANY REMOVAL.
- CONTRACTOR TO POTHOLE PRIOR TO START OF CONSTRUCTION TO VERIFY UTILITY CROSSINGS.
- CONTRACTOR TO CONFIRM LOCATIONS AND ELEVATIONS OF EXISTING UTILITIES PRIOR TO START OF CONSTRUCTION AND CONTACT ENGINEER IF IT DIFFERS FROM AS-BUILT INFORMATION.
- CONTRACTOR TO CONFIRM IF EXISTING STREET LIGHTS ARE TO REMAIN AND THAT EXISTING CONDUITS AND BOXES DO NOT CONFLICT WITH PROPOSED UTILITIES.
- UNDERGROUND MAINS FEEDING NFPA 13 SPRINKLER SYSTEMS MUST BE INSTALLED AND TESTED IN ACCORDANCE WITH NFPA 13 AND THE FIRE CODE, BY A LICENSED SPRINKLER CONTRACTOR WITH A PLUMBING PERMIT. THE ENTIRE MAIN MUST BE HYDROSTATICALLY TESTED AT ONE TIME, UNLESS ISOLATION VALVES ARE PROVIDED BETWEEN TESTED SECTIONS.
- UNDERGROUND MAINS FEEDING PRIVATE HYDRANTS MUST BE INSTALLED AND TESTED IN ACCORDANCE WITH NFPA 24, AND THE FIRE CODE, BY A LICENSED CONTRACTOR WITH A PLUMBING PERMIT. THE ENTIRE MAIN MUST BE HYDROSTATICALLY TESTED AT ONE TIME, UNLESS ISOLATION VALVES ARE PROVIDED BETWEEN TESTED SECTIONS.
- ALL HORIZONTAL AND VERTICAL WATER LINE BENDS, TEE'S, GATE VALVES AND DEADEND'S SHALL BE RESTRAINED TO THE WATER MAIN USING FACTORY RESTRAINED JOINT PIPE AS APPROVED IN SPL WW-277, OR MECHANICAL JOINT RESTRAINT DEVICES AS APPROVED IN SPL WW-278. THE CALCULATED RESTRAINT LENGTH(S) SHALL BE INCLUDED AS CALLOUT NOTE IN THE PLAN VIEW AND PROFILE, CALLOUT FROM BEGINNING STATION TO END STATION PER UCM SECTION 2.9.2.8.3.



WASTEWATER LINE A

SCALE:
HORIZ: 1"=20'
VERT: 1"=2'

811
Know what's below.
Call before you dig.
FOR CITY USE ONLY:

SITE PLAN APPROVAL Sheet 38 of 58
FILE NUMBER: **SP-2017-0503C** APPLICATION DATE: **DECEMBER 11, 2017**
APPROVED BY COMMISSION ON: **NA** UNDER SECTION **11E** OF
CHAPTER **20-5** OF THE CITY OF AUSTIN CODE.
EXPIRATION DATE (45-6-01, LDC): **CASE MANAGER C. DAVIS**
PROJECT EXPIRATION DATE (ORD #970005-A): **DWFPZ DDZ**

Director, Development Services Department
RELEASED FOR GENERAL COMPLIANCE: **2017-11-17**
Rev. 1 Correction
Rev. 2 Correction
Rev. 3 Correction

FINAL PLAN MUST BE RECORDED BY THE PROJECT EXPIRATION DATE. IF APPLICABLE. SUBSEQUENT SITE PLANS MUST NOT COMPLY WITH THE CODE CURRENT AT THE TIME OF FILING, AND ALL REQUIRED BUILDING PERMITS AND/OR A NOTICE OF CONSTRUCTION (IN A BUILDING PERMIT IS NOT REQUIRED), MUST ALSO BE APPROVED PRIOR TO THE PROJECT EXPIRATION DATE.

CONTRACTOR TO VERIFY SIZE, LOCATION AND ELEVATION OF ALL EXISTING UTILITIES, AT TIE-IN AND CROSSING LOCATIONS, PRIOR TO START OF CONSTRUCTION



Revision	By	Date	Description
18.08.08	TYAM/DD		ISSUED
20-CONNECTION TO EXIST. WW	TYAM/DD		

Client/Project
HOUSING AUTHORITY OF THE CITY OF AUSTIN
Permit Seal
PATHWAYS AT GOODRICH PLACE
2126 GOODRICH AVENUE
AUSTIN, TEXAS
Title
PUBLIC WASTEWATER PLAN & PROFILE

Project Number: 222010805
File Name: 222010805wpp01.dwg
Dwn. Chkd. Dgn. TYAM/DD
Drawing No. DWGNO
Revision Sheet