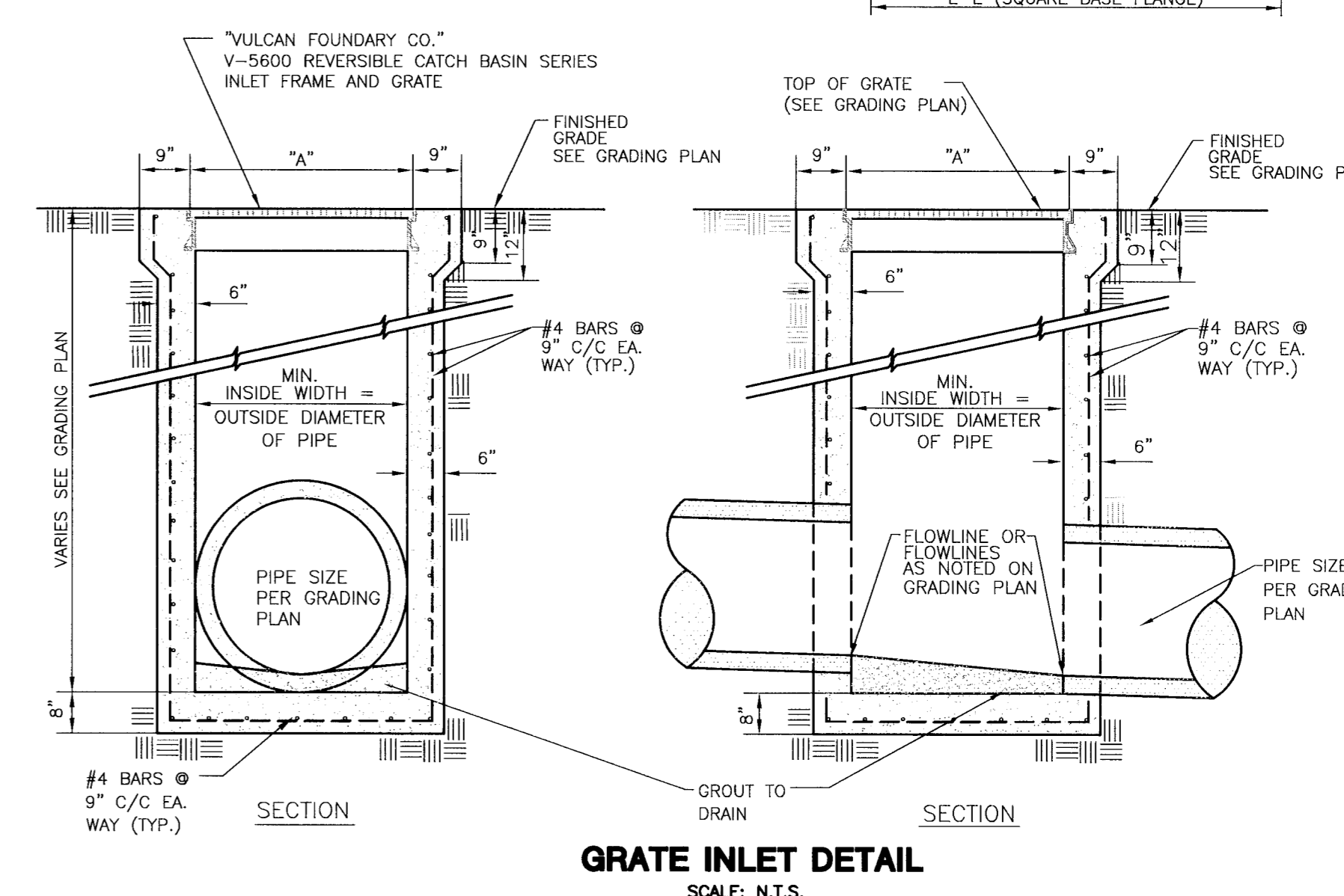
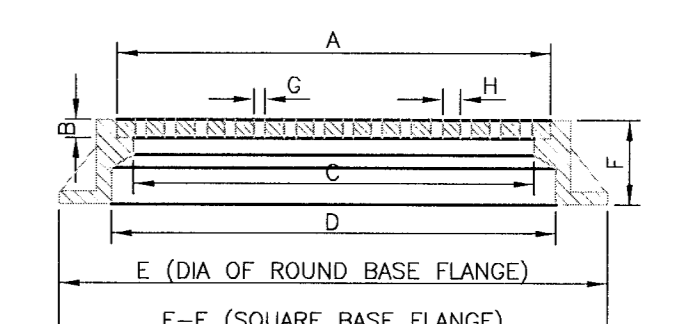


VULCAN SERIES Square

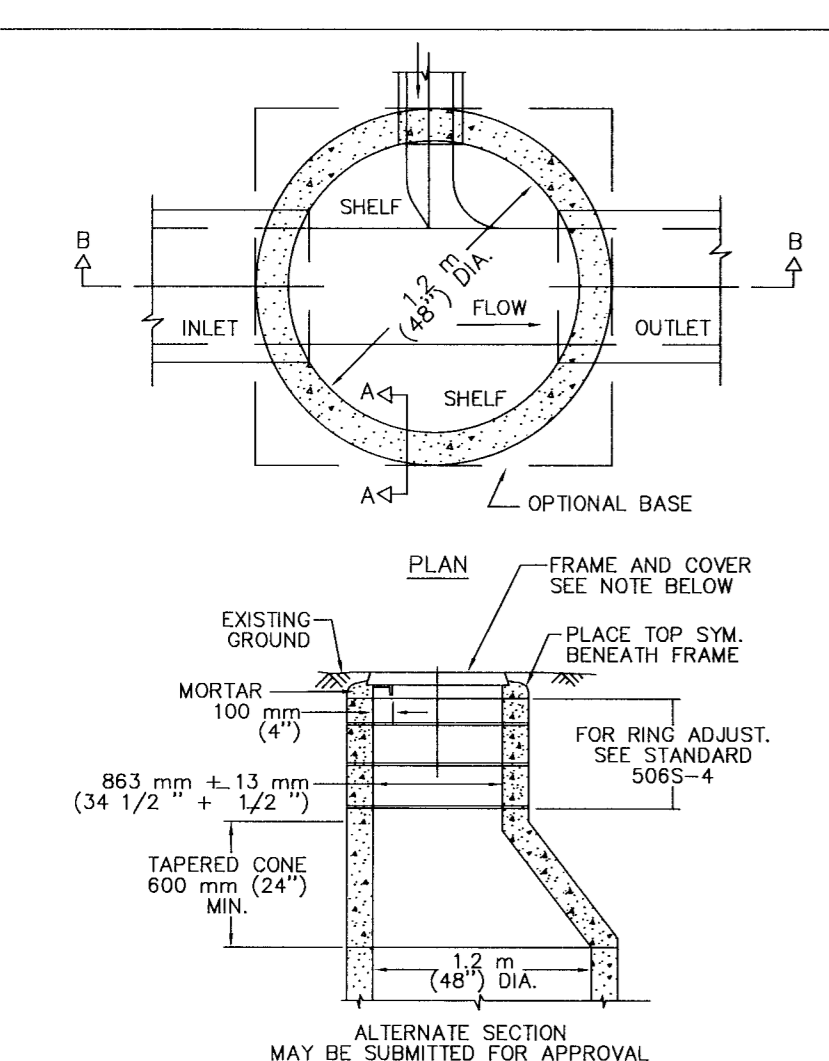
Part No.	A	B	C	D	E	F	G
V-5613	13x13	13x13	12x12	13x13	19x19	19x19	4
V-5620	19x19	19x19	18x18	20x20	25x25	25x25	4
V-5622	23x23	23x23	22x22	24x24	29x29	29x29	4
V-5624	25x25	25x25	24x24	26x26	31x31	31x31	4
V-5625	25x25	25x25	2	24x24	26x26	32x32	5
V-5626	25x25	25x25	2	24x24	26x26	32x32	6
V-5630	31x31	31x31	30x30	32x32	37x37	37x37	4
V-5636	37x37	37x37	36x36	38x38	43x43	43x43	4
V-5642	43x43	43x43	42x42	44x44	50x50	50x50	5
V-5648	50x50	50x50	48x48	51x51	58x58	58x58	4

Rectangular

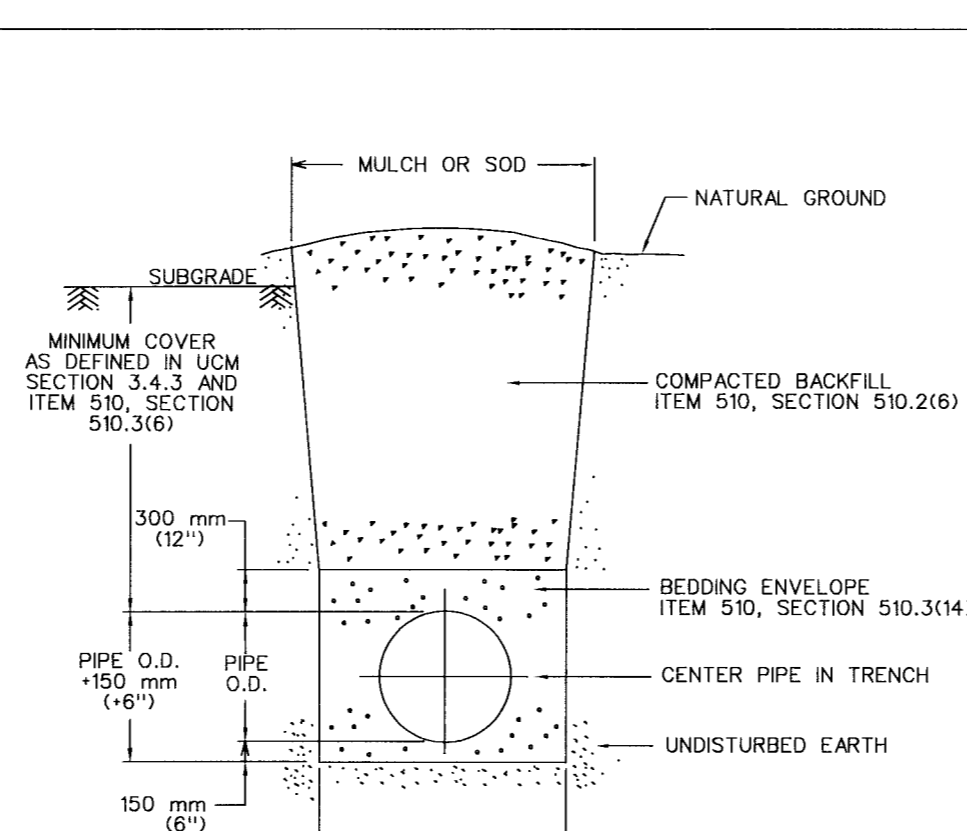
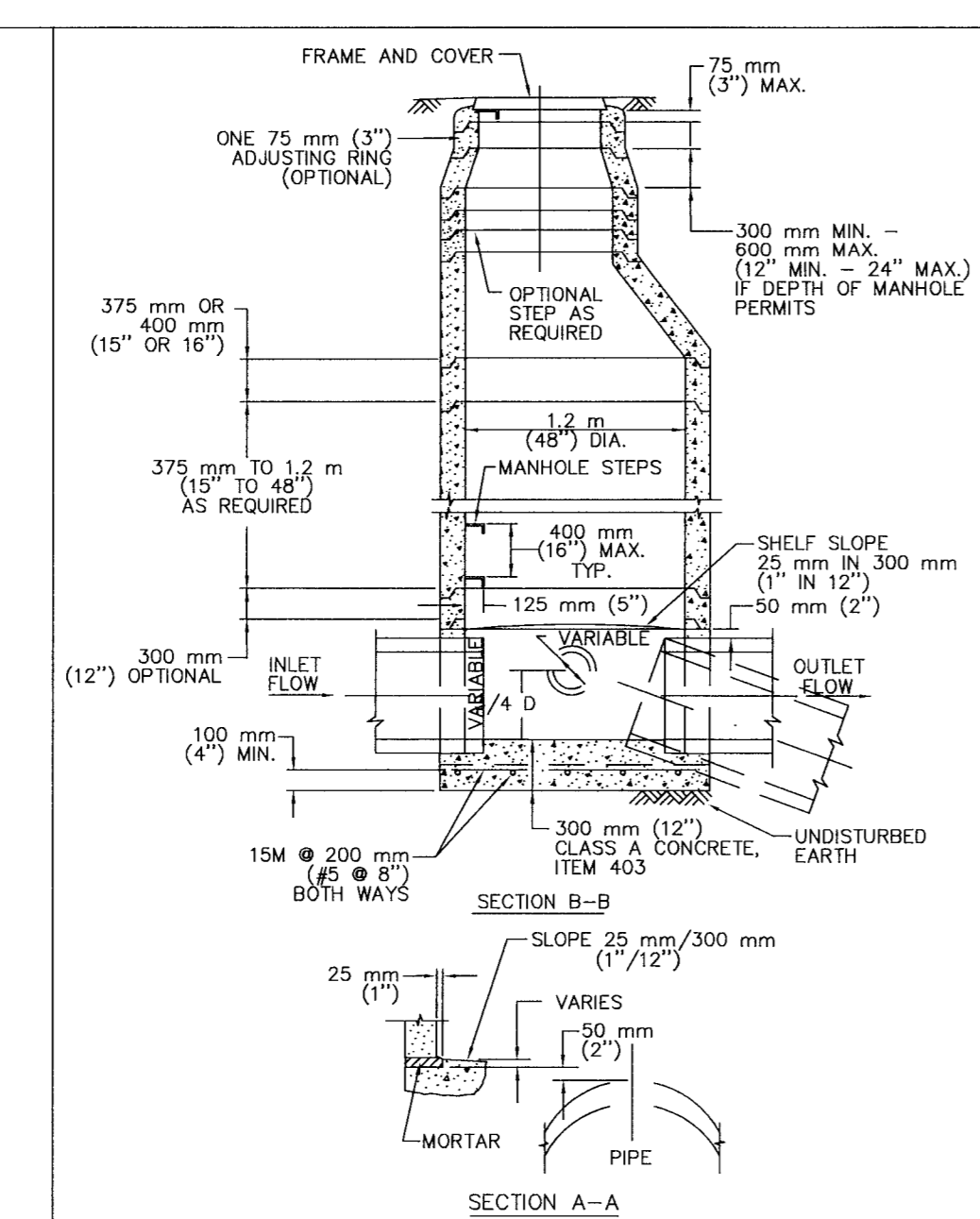
Part No.	A	B	C	D	E	F	G
V-5654	19x24	19x24	18x24	20x26	25x31	25x31	4
V-5655	19x30	19x30	18x30	20x32	25x37	25x37	4
V-5656	19x37	19x37	18x37	20x38	25x43	25x43	4
V-5660	23x35	23x35	22x34	24x36	29x41	29x41	4
V-5662	25x31	25x31	24x30	26x32	31x37	31x37	4
V-5665	25x37	25x37	24x36	26x38	31x43	31x43	4
V-5667	25x49	25x49	24x48	26x50	31x55	31x55	4
V-5668	31x37	31x37	30x36	32x38	38x44	38x44	5
V-5669	31x49	31x49	30x48	32x50	37x55	37x55	4
V-5670	37x49	37x49	36x48	38x50	43x55	43x55	4



GRATE INLET DETAIL
SCALE: N.T.S.



NOTE: USE 800 mm (32") FRAME AND COVER.
MINIMUM MANHOLE DIA. 1.2 m (4')
MINIMUM PIPE SIZE 450 to 600 mm (18 to 24")



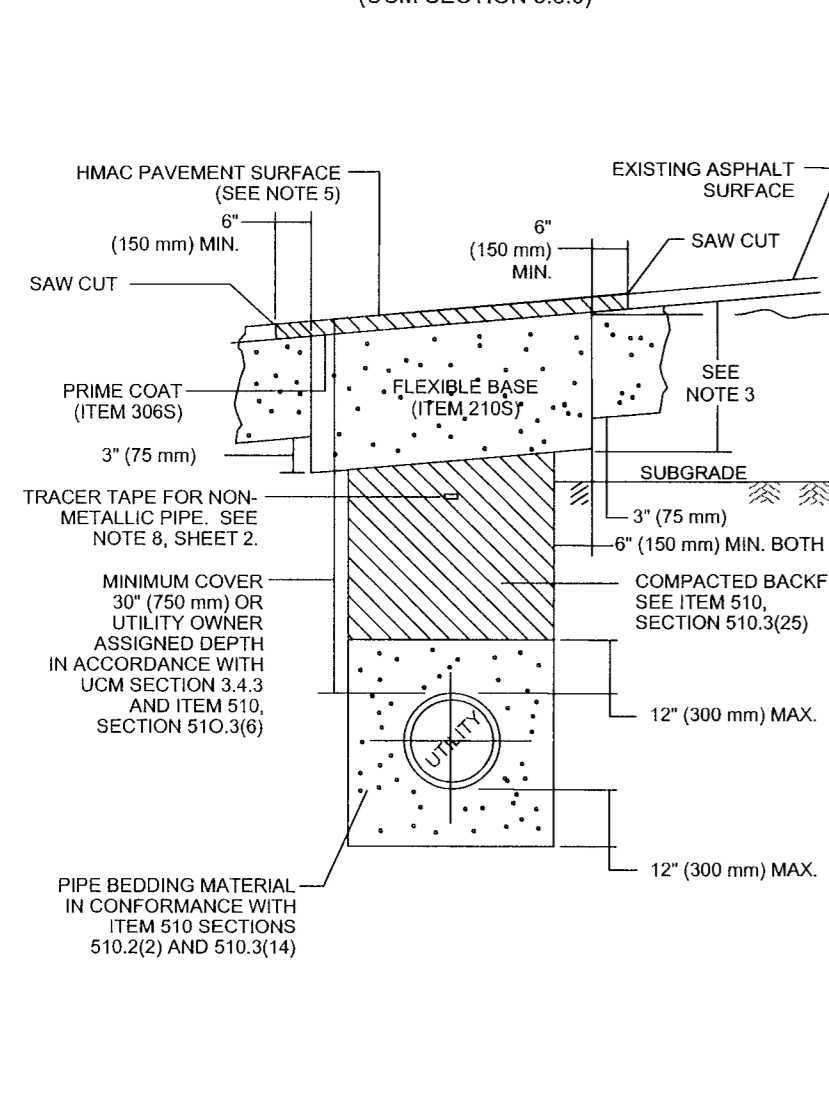
REFERENCES:
1. UTILITY CRITERIA MANUAL SECTION 3.4.3, "FINAL DESIGN"
2. STANDARD SPECIFICATION MANUAL ITEM 510, SECTION 510.2(6), "SELECT BACKFILL OR BORROW"; SECTION 510.3(6), "TRENCH DEPTH AND DEPTH OF COVER"; SECTION 510.3(14), "PIPE BEDDING ENVELOPE"

CITY OF AUSTIN DEPARTMENT OF WATER RESOURCES AND DEVELOPMENT REVIEW
RECORD COPY SIGNED BY GEORGE E. OSWALD 2/14/02 ADOPTED

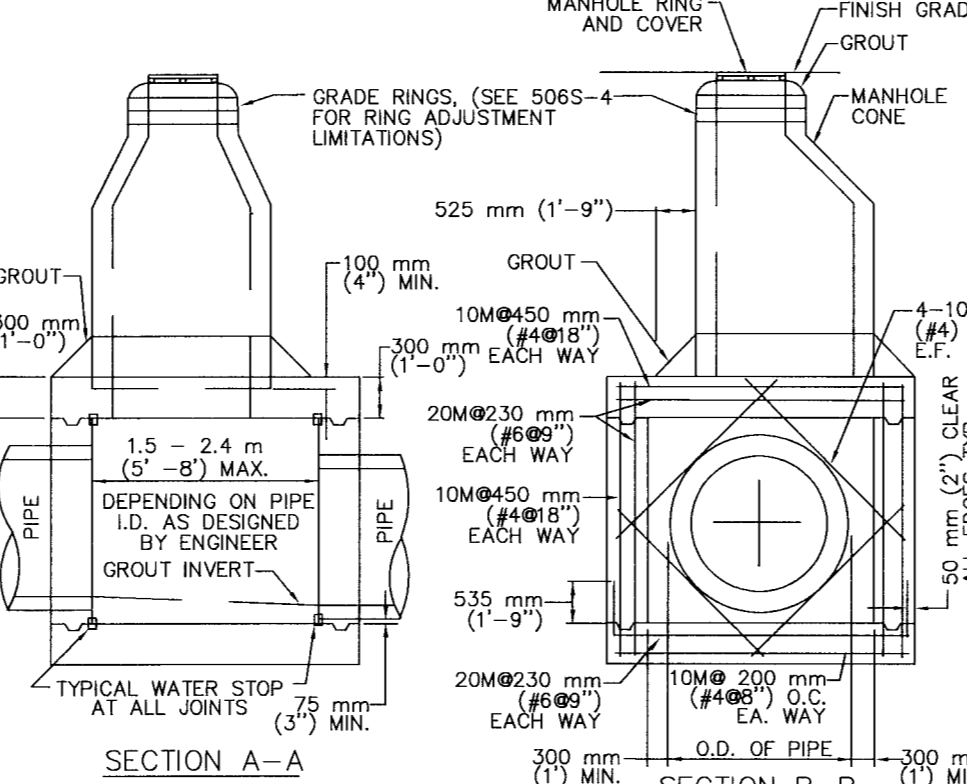
CITY OF AUSTIN DEPARTMENT OF WATER RESOURCES AND DEVELOPMENT REVIEW
RECORD COPY SIGNED BY GEORGE E. OSWALD 2/14/02 ADOPTED

CITY OF AUSTIN DEPARTMENT OF PUBLIC WORKS
RECORD COPY SIGNED BY BILL GARDNER 03/13/06 ADOPTED

TRENCH REPAIR IN ASPHALTIC SURFACE OVER FLEXIBLE BASE (UCM SECTION 5.8.0)



NOTES:
1. THE EXISTING PAVING SURFACE SHALL BE SAW CUT IN A STRAIGHT LINE, A MINIMUM OF 12" (300 mm) WIDER THAN UNDISTURBED SIDES OF THE TRENCH AND SYMMETRICAL ABOUT THE CENTER LINE OF THE EXCAVATION.
2. IF EXCAVATION AREA IS OPEN FOR TEMPORARY PUBLIC USE, THE SURFACE SHALL BE MAINTAINED LEVEL WITH ADJACENT FINISHING SURFACE WITH COLD MIX AC OR TEMPORARY HMAC. TEMPORARY MIX SHALL BE PLACED OVER FLEXIBLE BASE.
3. ROAD BASE SHALL BE REPLACED IN KIND WITH BASE THICKNESS EQUAL TO EXISTING BASE THICKNESS PLUS 3" (75 mm), BUT IN NO CASE LESS THAN 12" (300 mm).
4. DAMAGED PAVEMENT OUTSIDE THE TRENCH CUT SHALL BE REMOVED AND REPLACED WITH A BASE THICKNESS OF 10" (250 mm) OR A THICKNESS MATCHING EXISTING, WHICHEVER IS GREATER.
5. REPLACEMENT AC SURFACE LAYER SHALL BE OF THE TYPE AND THICKNESS BASED ON FUNCTIONAL CLASSIFICATION
a) MIN. 2" (50 mm) HMAC TYPE "D" FOR TRENCH REPAIR IN LOCAL/RESIDENTIAL STREETS
b) MIN. 3" (75 mm) HMAC TYPE "C" FOR TRENCH REPAIR IN COLLECTOR/ARTERIAL STREETS
SEE ITEM 340S, SECTION 340S.4
6. CLASS "J" PC CONCRETE (ITEM 403S) OR CONTROLLED LOW STRENGTH MATERIAL (CLSM) MAY BE SUBSTITUTES IN THESE REPAIRS FOR THE FLEXIBLE BASE AND COMPACTED BACKFILL. PC CONCRETE GREATER THAN A 2 SACK MIX WILL NOT BE ALLOWED.
7. TACK COAT ALL EXPOSED EDGES AND SURFACES (SPEC ITEM 307S).
8. AS PER CITY OF AUSTIN STANDARD SPECIFICATION 510, SECTION 510.2(8)(K)S, FOR ALL NON-METALLIC PIPE, DIRECTLY ABOVE THE CENTERLINE OF THE PIPE AND A MINIMUM OF 12" (300 mm) BELOW THE SUBGRADE, OR A MINIMUM OF 16" (400 mm) BELOW FINISHED GRADE ON AREAS OUTSIDE THE LIMITS OF PAVEMENT, SHALL BE PLACED INDUCTIVE TRACER TAPE IN ACCORDANCE WITH THE MANUFACTURER'S REQUIREMENTS. THE TAPE SHALL BE ENCASED IN A PROTECTIVE PLASTIC JACKET AND COLOR CODED IN ACCORDANCE WITH APWA UNIFORM COLOR CODE.

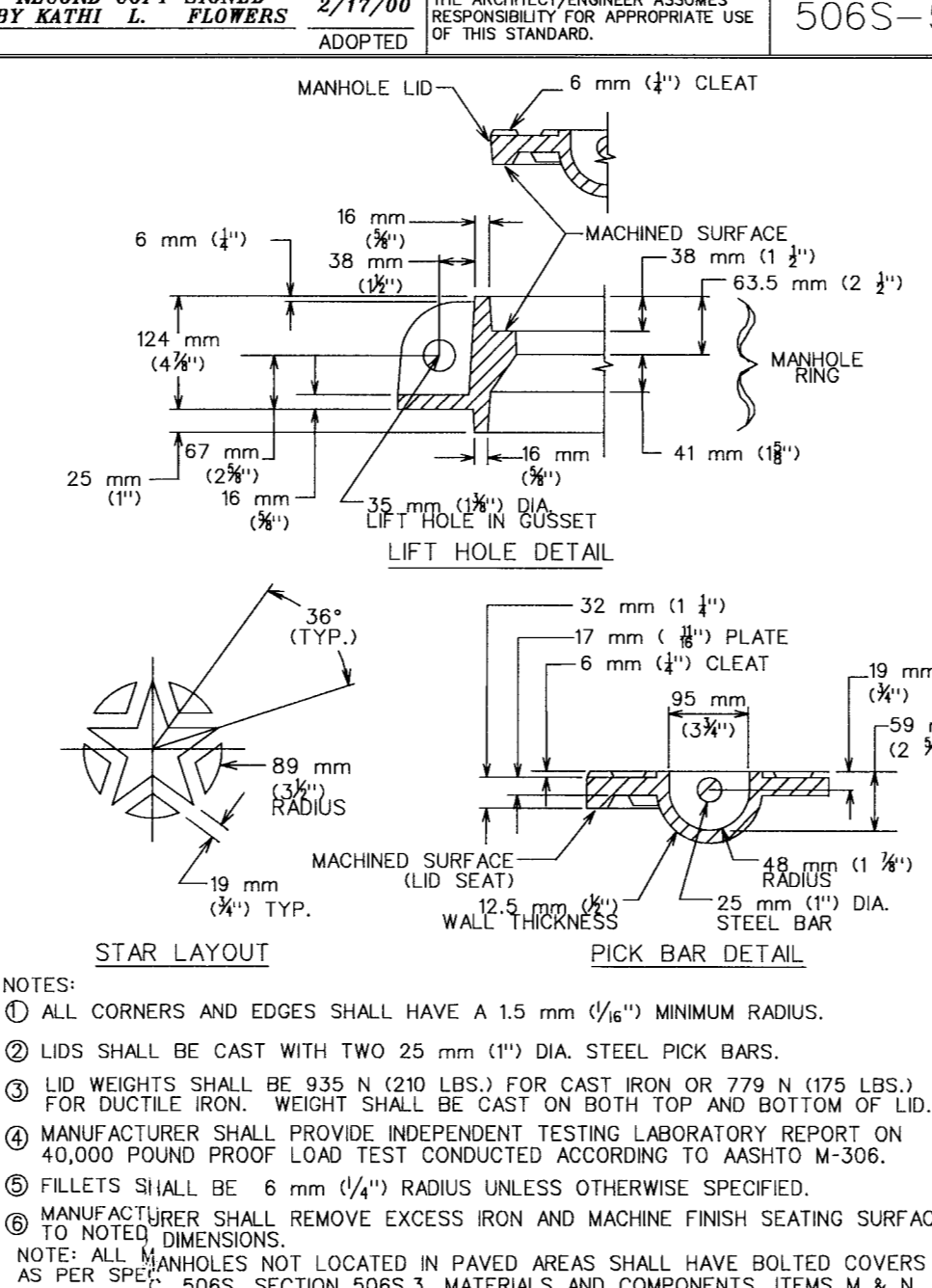
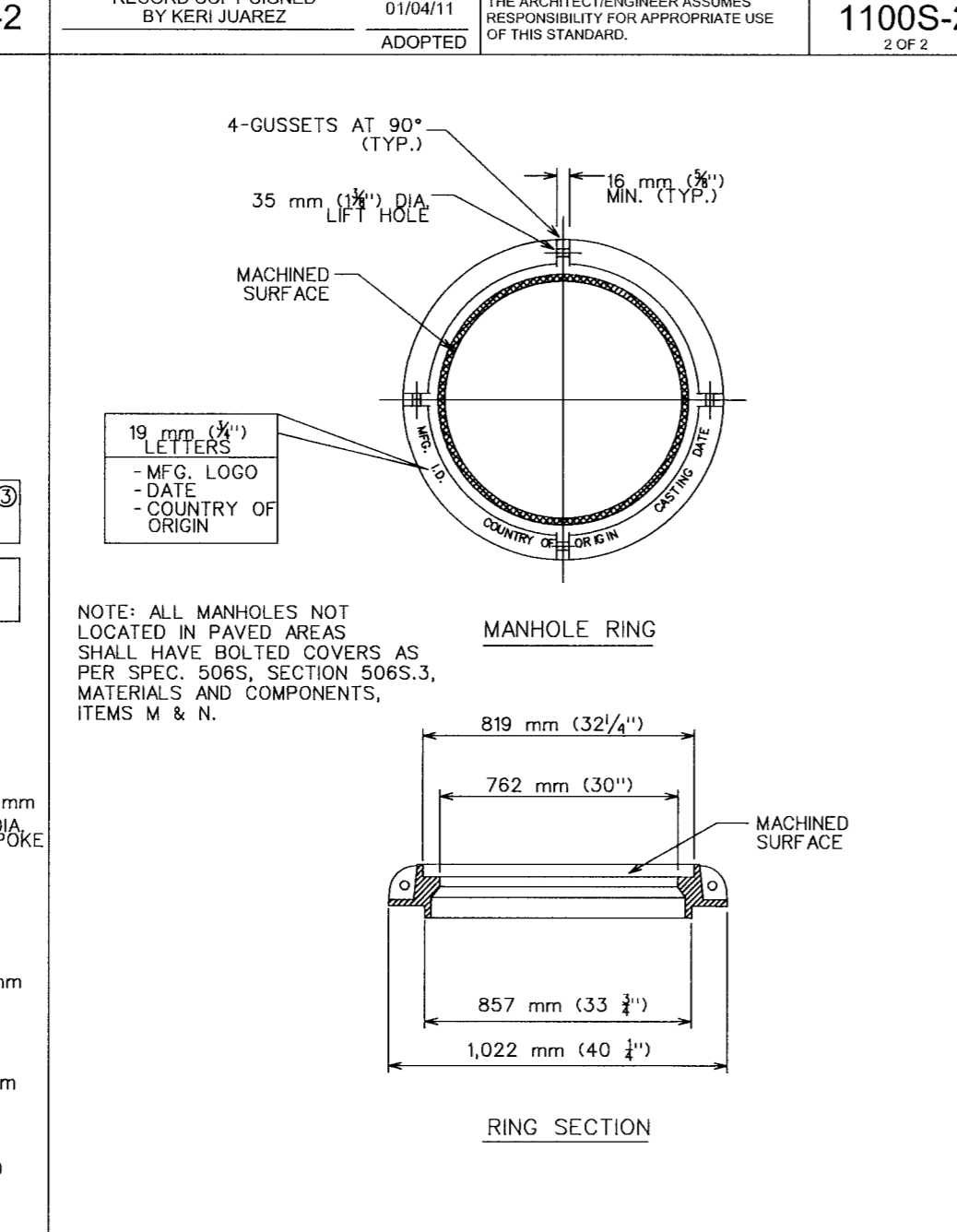
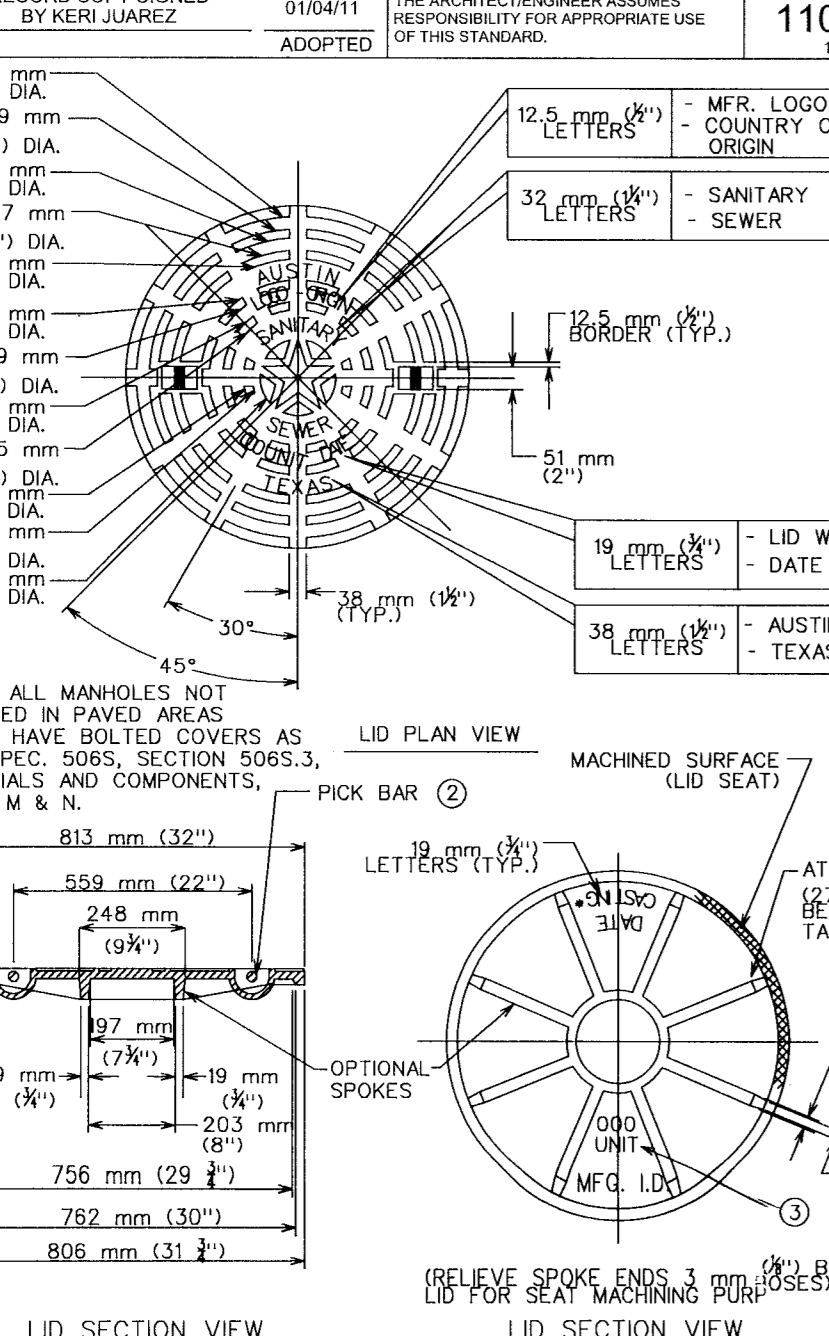


NOTES:
1. BOX WALLS MUST BE FORMED INSIDE AND OUTSIDE WITH APPROVED MATERIALS.
2. USE CLASS "A" CONCRETE. SEE ITEM 403.
3. TYPICAL CAST IN PLACE BOX FOR 760 mm (30") OR LARGER PIPE.
4. REINFORCING STEEL SHALL MEET ITEM 406, REINFORCING STEEL.

CITY OF AUSTIN DEPARTMENT OF PUBLIC WORKS
RECORD COPY SIGNED BY KERI JUAREZ 01/04/11 ADOPTED

CITY OF AUSTIN DEPARTMENT OF PUBLIC WORKS
RECORD COPY SIGNED BY KERI JUAREZ 01/04/11 ADOPTED

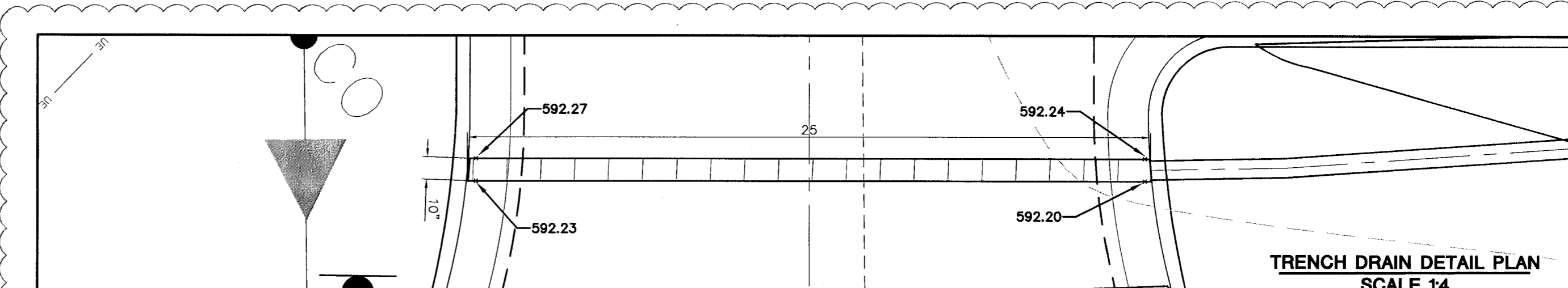
CITY OF AUSTIN WATER AND WASTEWATER UTILITIES
RECORD COPY SIGNED BY KATHI L. FLOWERS 2/17/00 ADOPTED



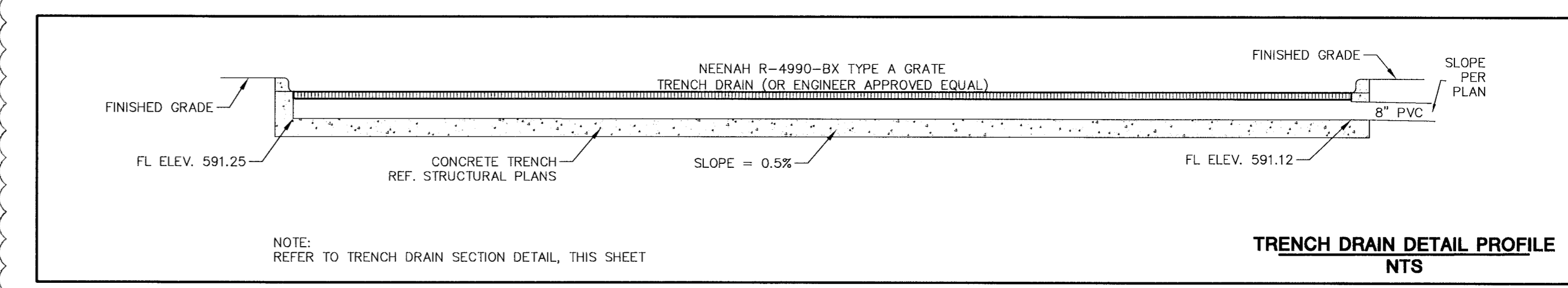
CITY OF AUSTIN DEPARTMENT OF WATER UTILITY
RECORD COPY SIGNED BY KATHI L. FLOWERS 3/9/04 ADOPTED

CITY OF AUSTIN DEPARTMENT OF WATER UTILITY
RECORD COPY SIGNED BY KATHI L. FLOWERS 3/9/04 ADOPTED

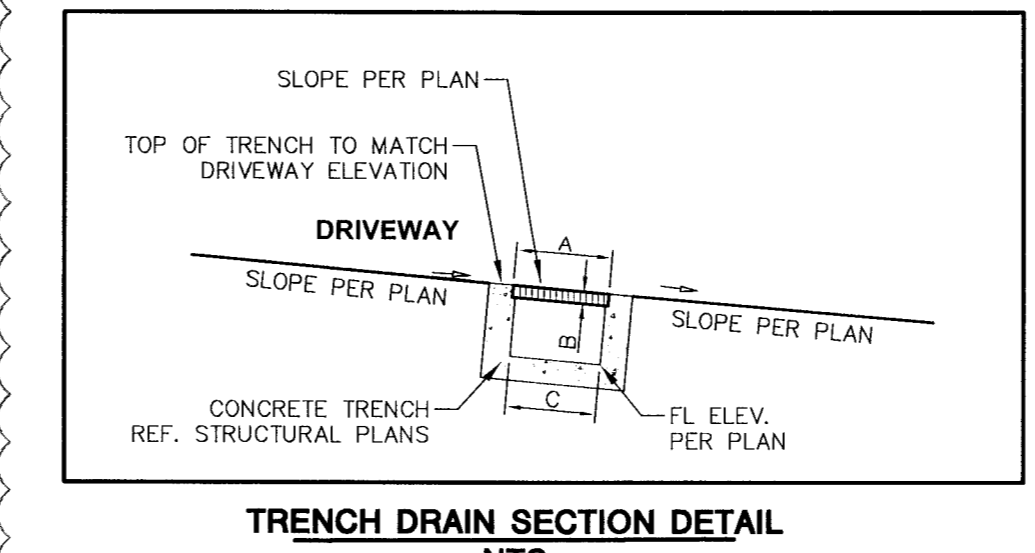
CITY OF AUSTIN DEPARTMENT OF WATER UTILITY
RECORD COPY SIGNED BY KATHI L. FLOWERS 3/9/04 ADOPTED



TRENCH DRAIN DETAIL PLAN
SCALE 1:4



TRENCH DRAIN DETAIL PROFILE
NTS



TRENCH DRAIN SECTION DETAIL
NTS

Neenah Catalog Rectangular

No.	A	B	C
R-4990-BX	10	1/2	8

811
Know what's below. Call before you dig.
FOR CITY USE ONLY:

SITE PLAN APPROVAL Sheet 34 of 50
FILE NUMBER: SP-2017-0503C APPLICATION DATE: December 11, 2017
APPROVED BY COMMISSION ON: N/A UNDER SECTION 118 OF CHAPTER 206 OF THE CITY OF AUSTIN CODE.
EXPIRATION DATE (25-5-B1.DC) CASE MANAGER C. DABZ
PROJECT EXPIRATION DATE (000-9970905-A) DWPZ
Director, Development Services Department
RELEASED FOR GENERAL COMPLIANCE: 2/28/17
Rev. 1. Correction 2
Rev. 2. Correction 2
Rev. 3. Correction 3

Client/Project: HOUSING AUTHORITY OF THE CITY OF AUSTIN
Permit/Seal: JUAN P. MARTINEZ 106158
Project Number: 222010805
File Name: 222010805.dwg
Drawing No. DWGNO
Revision Sheet