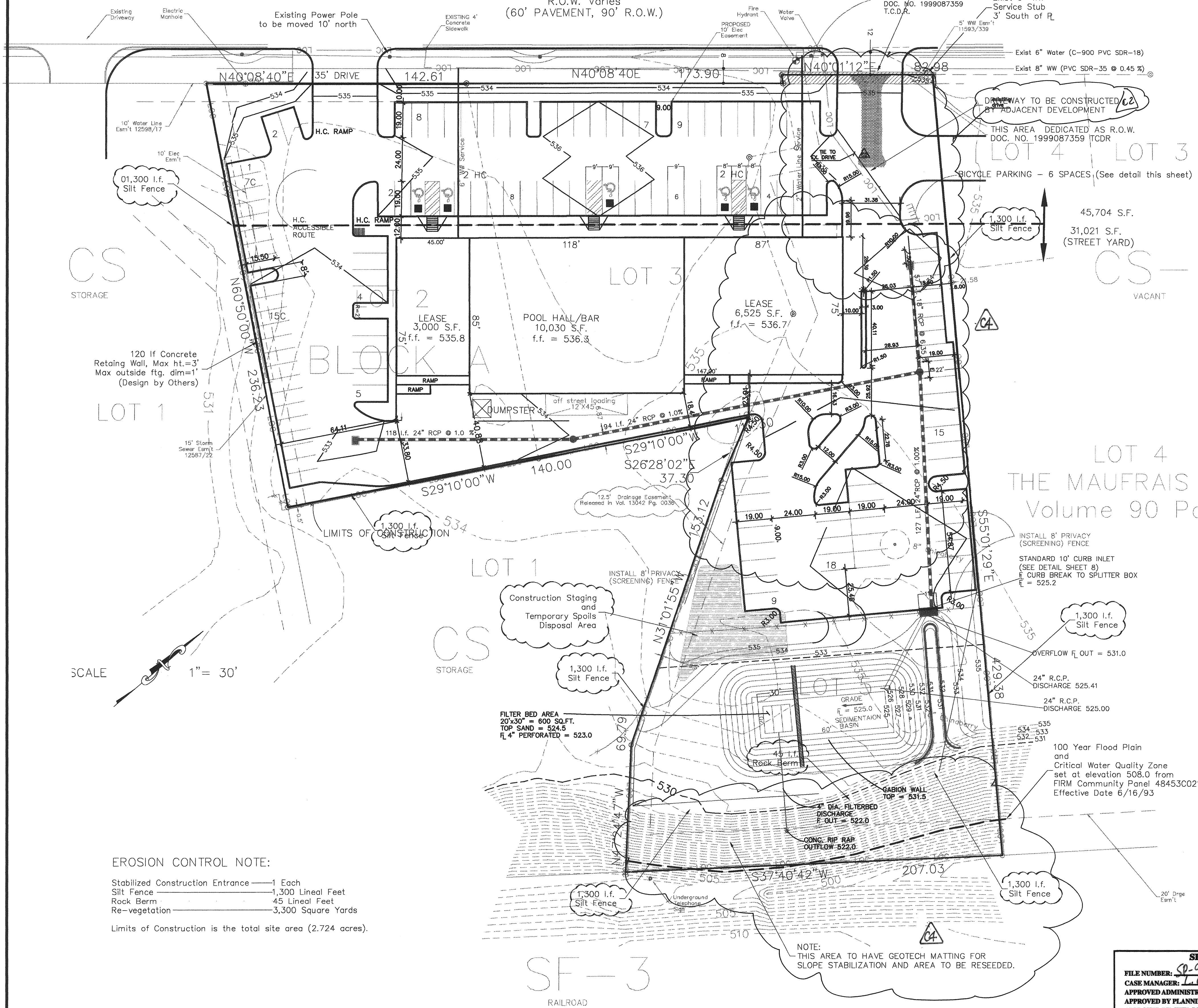


CS  
SALES AND SERVICE

# SOUTH LAMAR BOULEVARD

R.O.W. Varies  
(60' PAVEMENT, 90' R.O.W.)



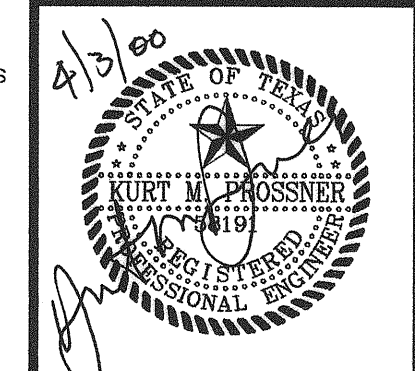
SCALE 1" = 30'

**EROSION CONTROL NOTE:**  
 Stabilized Construction Entrance — 1 Each  
 Silt Fence — 1,300 Lineal Feet  
 Rock Berm — 45 Lineal Feet  
 Re-vegetation — 3,300 Square Yards  
 Limits of Construction is the total site area (2.724 acres).

NOTE: THIS AREA TO HAVE GEOTECH MATTING FOR SLOPE STABILIZATION AND AREA TO BE RESEED.

SITE PLAN RELEASE		Sheet 10 of 14
FILE NUMBER: SP-97-0415C	EXPIRATION DATE: 8-25-2002	
CASE MANAGER: J. Cavanaugh	APPLICATION DATE: 10-14-97	
APPROVED ADMINISTRATIVELY ON: 8-25-99		
APPROVED BY PLANNING COMMISSION ON: 7-14-98		
APPROVED BY CITY COUNCIL ON: [Signature]		
under Section 265.001 of Chapter 265 of the Austin City Code.		
Director, Development Review and Inspection Department	Zoning: CS, CS-CO	
DATE OF RELEASE: 8-25-99		
Rev. 1	Correction 1 10.1.99 (SLS)	
Rev. 2	Correction 2 11.9.99 (SLS)	
Rev. 3	Correction 3 4-18-00 (SLS)	

The seal appearing on this document was authorized by:  
 Kurt M. Prossner, P.E.  
 Texas Reg. No. 58191  
 on



REVISION LOG TO REFLECT DRIVE BEING CONSTRUCTED BY ADJ. DEVELOPMENT
REVISION LOG TO REFLECT DRIVE BEING CONSTRUCTED BY ADJ. DEVELOPMENT
REVISION LOG TO REFLECT DRIVE BEING CONSTRUCTED BY ADJ. DEVELOPMENT
REVISION LOG TO REFLECT DRIVE BEING CONSTRUCTED BY ADJ. DEVELOPMENT
REVISION LOG TO REFLECT DRIVE BEING CONSTRUCTED BY ADJ. DEVELOPMENT