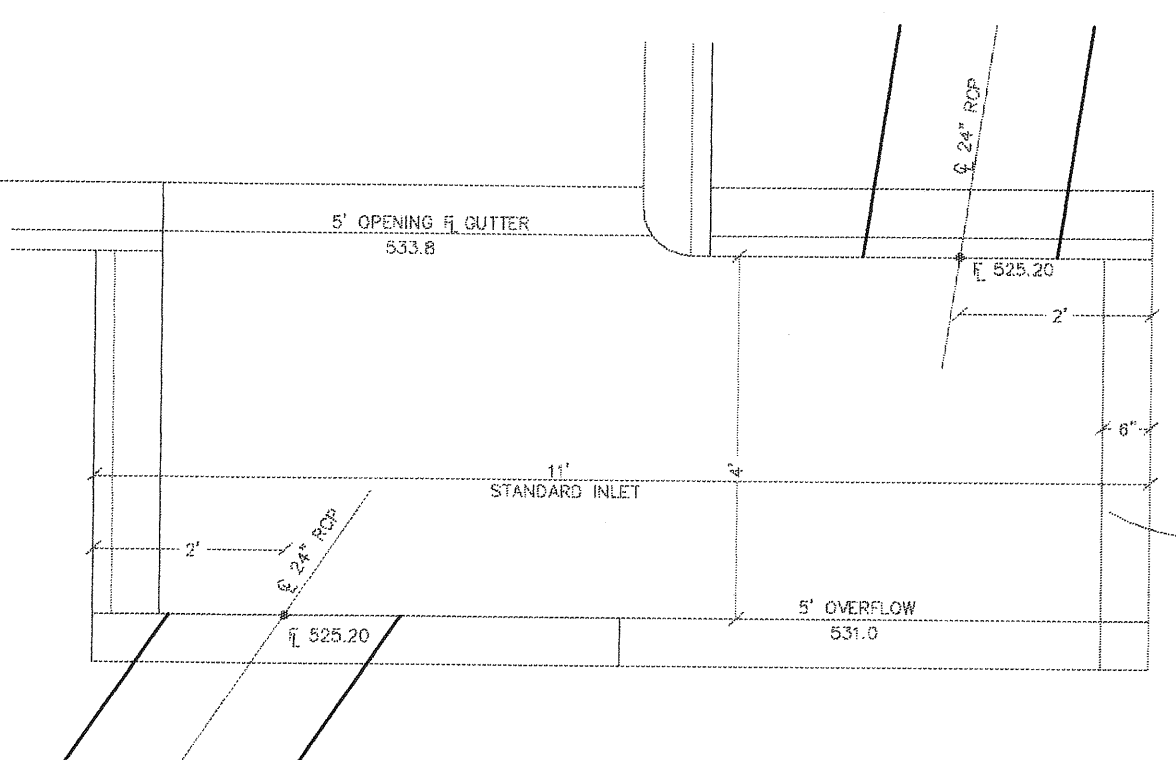
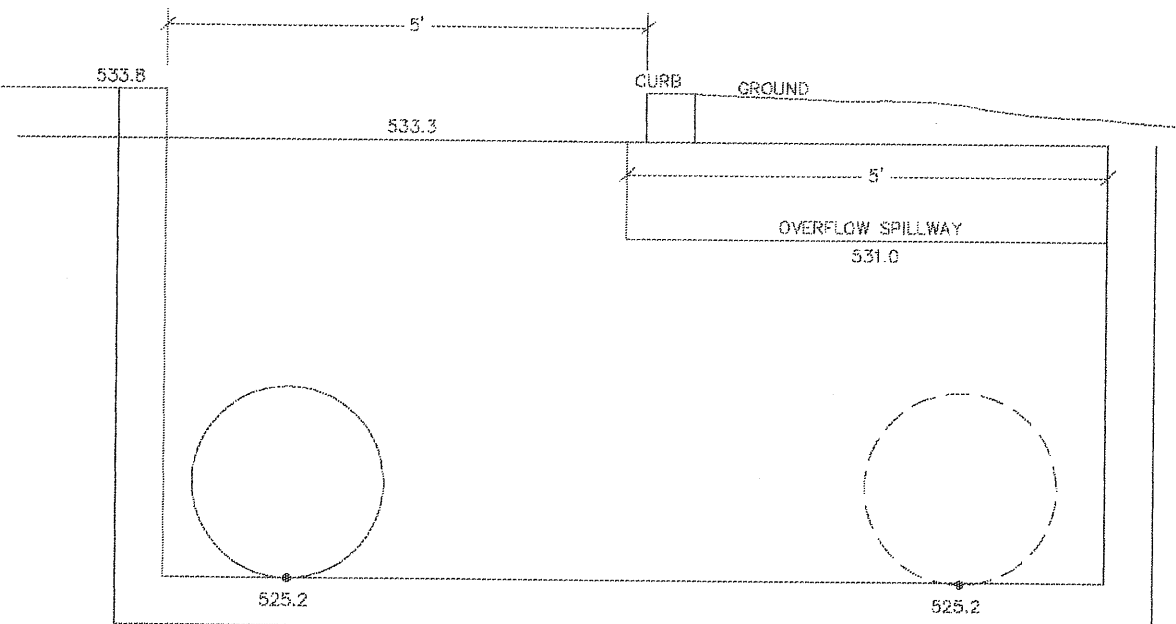
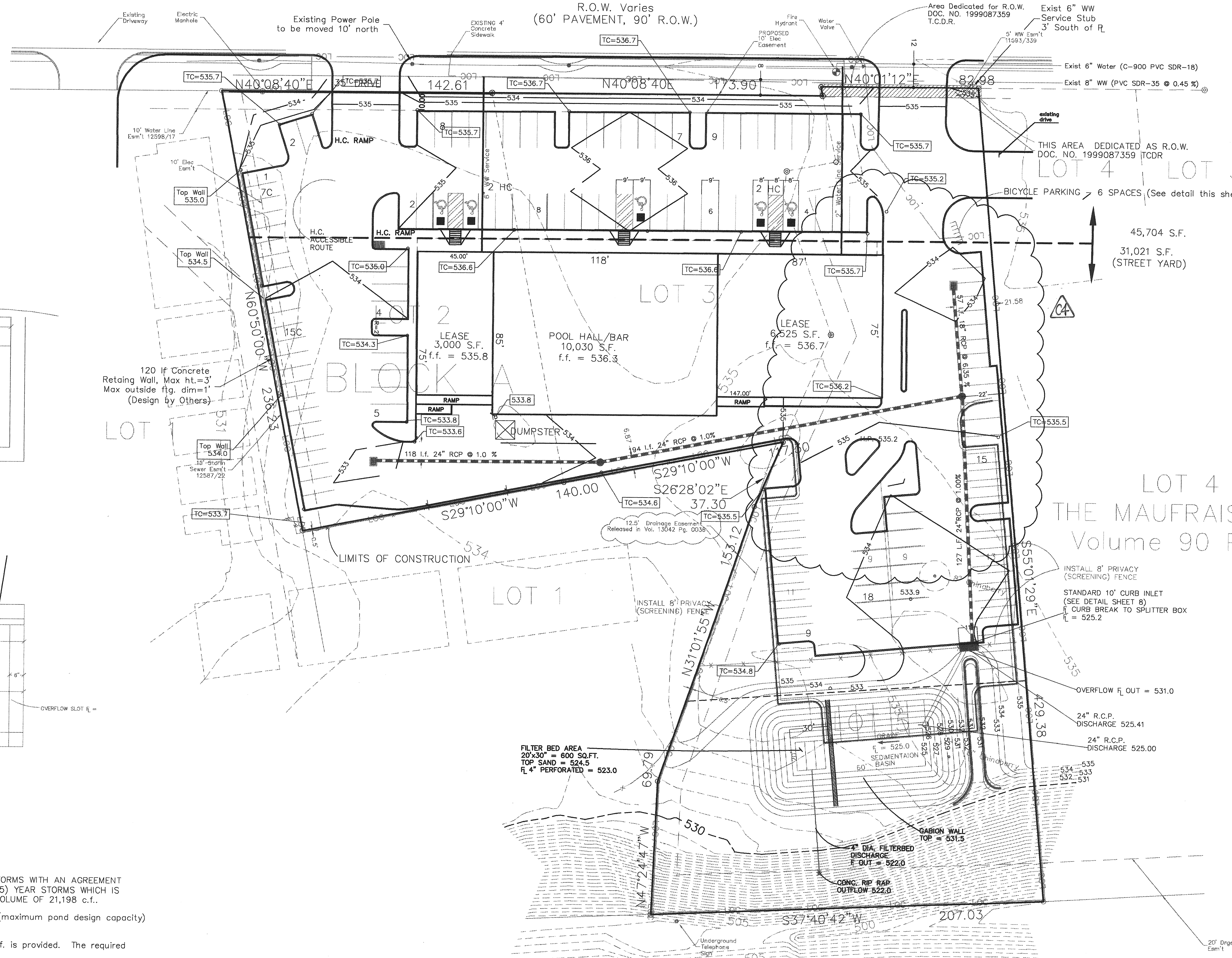


# SOUTH LAMAR BOULEVARD

R.O.W. Varies  
(60' PAVEMENT, 90' R.O.W.)

SCALE 1" = 30'



SPLITTER BOX DETAIL  
N.T.S.

**DETENTION VOLUME:**  
NOTE:  
THE SITE RECEIVED A WAIVER FROM PROVIDING DETENTION FOR ALL STORMS WITH AN AGREEMENT TO PROVIDE EXTENDED DETENTION FOR THE TWO (2) YEAR AND FIVE (5) YEAR STORMS WHICH IS PROVIDED IN THE WATER QUALITY POND. THIS POND HAS A DESIGN VOLUME OF 21,198 c.f.  
The design stage containing 20,600 c.f. is 530.8. The overflow weir (maximum pond design capacity) is set at 531.0, containing 21,198 c.f.  
The required sedimentation pond bottom area is 800 s.f. and 1000 s.f. is provided. The required filtration area pond bottom is 445 s.f. and 400 s.f. is provided.

**WATER QUALITY VOLUME CALCULATIONS:**  
 $(1.66) \{ [(0.5) + (0.1)(10.0 - 2.0)] / 12 \} (43,560) = 7,833 \text{ c.f.} > \text{SAY } 8,000 \text{ c.f.}$   
 $A_f = WQV / 18 = 8,000 / 18 = 445 \text{ s.f.}$   
 $A_s = WQV / 10 = 8,000 / 10 = 800 \text{ s.f.}$

Elev	Area s.f.	Storage c.f.	
524.5	400	0	← WATER QUALITY VOLUME
525	1,400	450	
526	1,976	2,138	
527	2,624	4,438	
528	3,344	7,422	
529	4,136	11,162	← 100 Yr Stage
530	5,000	15,730	
531	5,936	21,198	← Over Flow Weir Crest

**DETENTION VOLUME CALCULATIONS:**  
Assume  $T_d = 61.79 \text{ Min.}$   
 $\frac{[(61.79 + 17.83)^3 - 1.7625]}{[129.03(61.79 + 17.83 - (0.7625)(61.79))]} = 0.5345$   
 $\frac{[2(0.95)(1.66)] / 5.88 = 0.5382}{0.5382 / 0.5345 = 1.0071}$   
Final  $T_d = (61.79)(1.0071) = 62.23$   
 $S_d = \{ (60)(0.95) \} [129.03 / [62.23 + 17.83]^2 (1.66)(62.23)] - \{ 30(5.86)(62.23 + 10) \} = 14,175 \text{ c.f.}$   
 $S_r = (14,175)(6.87 / 4.56) = 20,588 \text{ c.f.}$

**SITE PLAN RELEASE** Sheet 2 of 18

FILE NUMBER: SP-91-0418 EXPIRATION DATE: 8-25-2009

CASE MANAGER: L. COVATNEY APPLICATION DATE: 10-14-97

APPROVED ADMINISTRATIVELY ON: 8-25-99

APPROVED BY PLANNING COMMISSION ON: 7-19-98

APPROVED BY CITY COUNCIL ON: \_\_\_\_\_

under Section 111 of Chapter 255 of the Austin City Code.

*[Signature]*  
City Director/Development Review and Inspection Department

DATE OF RELEASE: 8-25-99 Zoning: CS, CS-20

Rev. 1 \_\_\_\_\_ Correction 1 4-13-00 (PMS)

Rev. 2 \_\_\_\_\_ Correction 2 \_\_\_\_\_

Rev. 3 \_\_\_\_\_ Correction 3 \_\_\_\_\_

The seal appearing on this document was authorized by:  
Kurt M. Prossner, P.E.  
Texas Reg. No. 58191  
on \_\_\_\_\_



24 REVISED PARKING LOT FOR 'STARBUCKS'

This drawing is copyrighted by:  
**Prossner and Associates, Inc.**  
Consulting Engineers  
13377 Horn Springs Rd., Suite 104  
Austin, Texas 78724  
Phone: (512) 918-3343  
Fax: (512) 918-2431

AINBINDER RETAIL CENTER  
1509 SOUTH LAMAR BOULEVARD, AUSTIN, TEXAS 78745  
GRADING PLAN