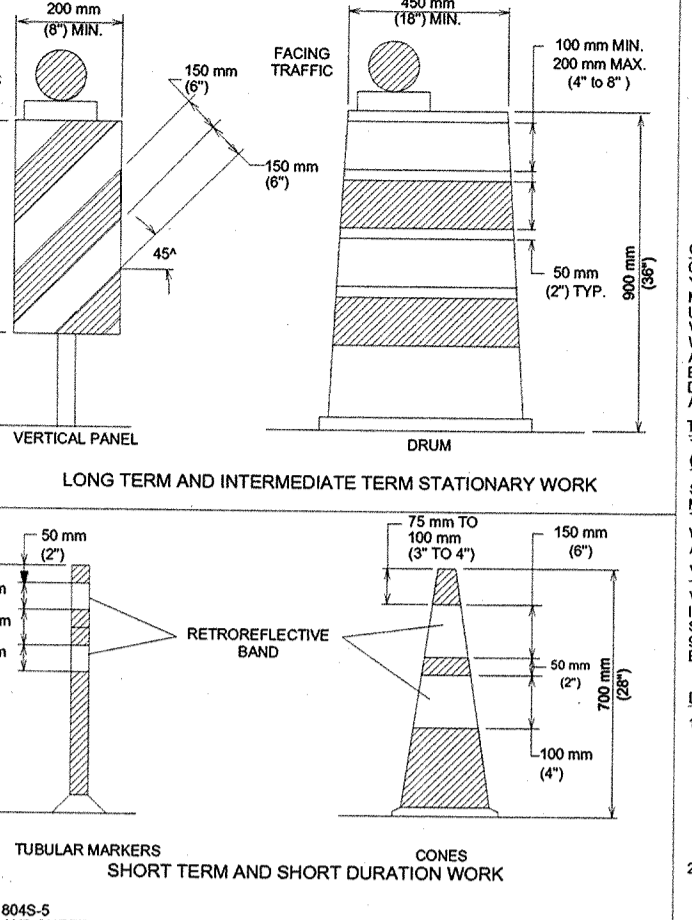
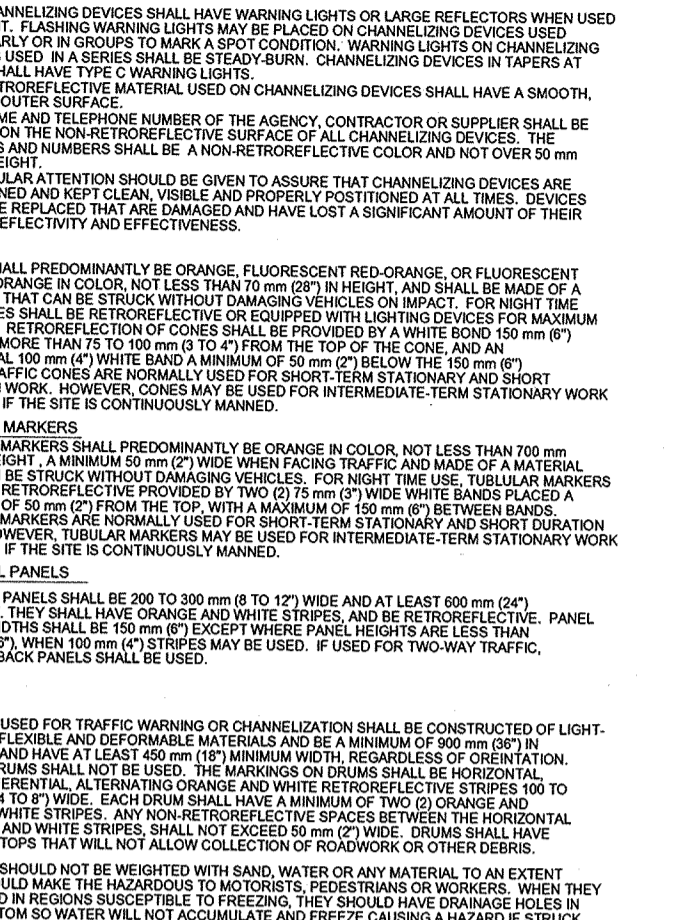
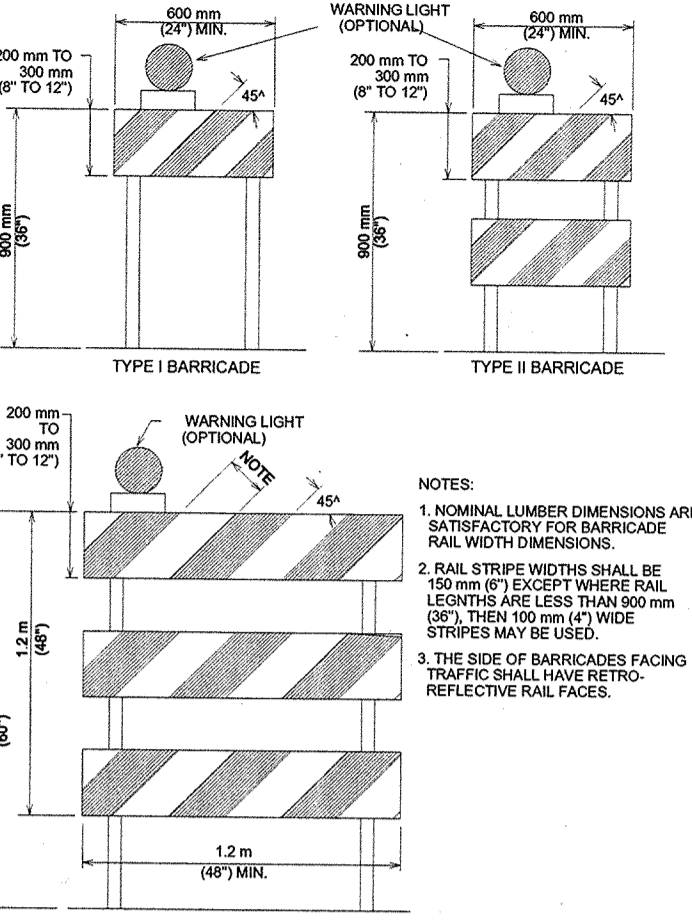
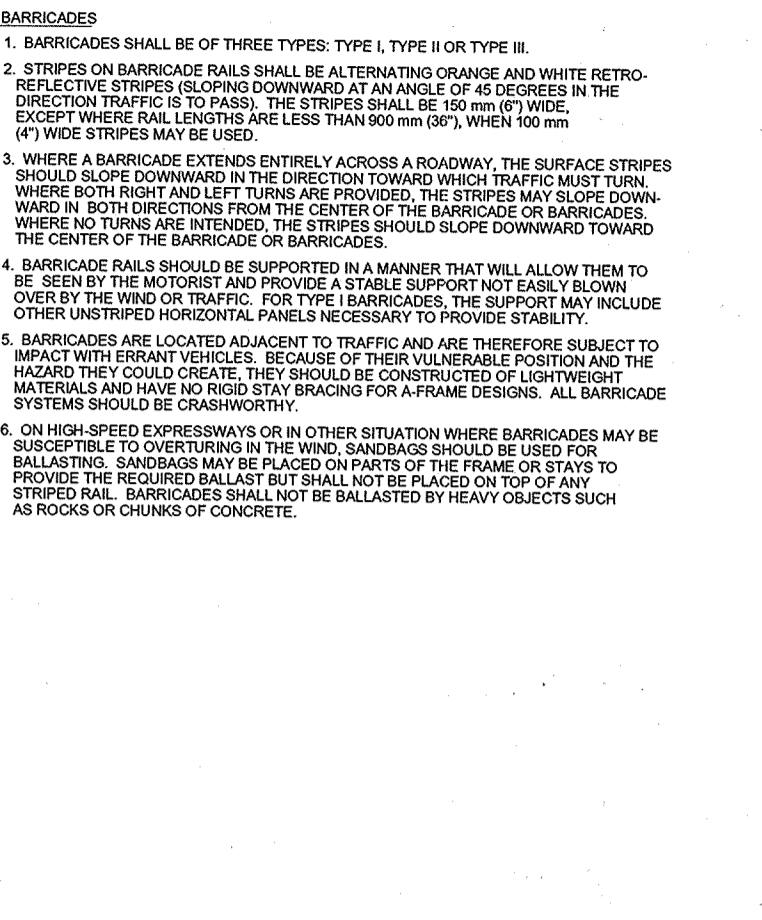
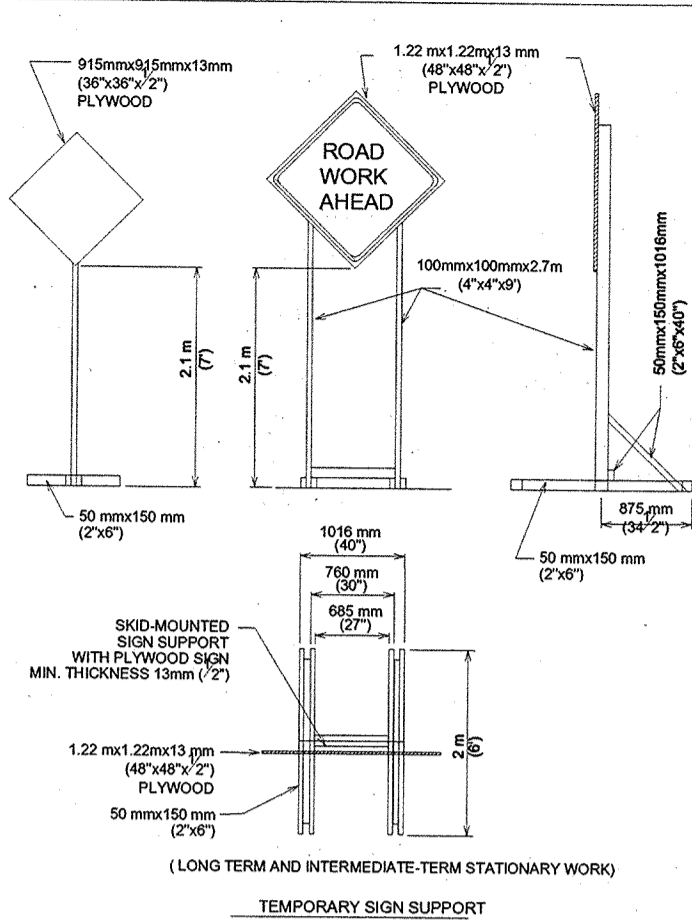
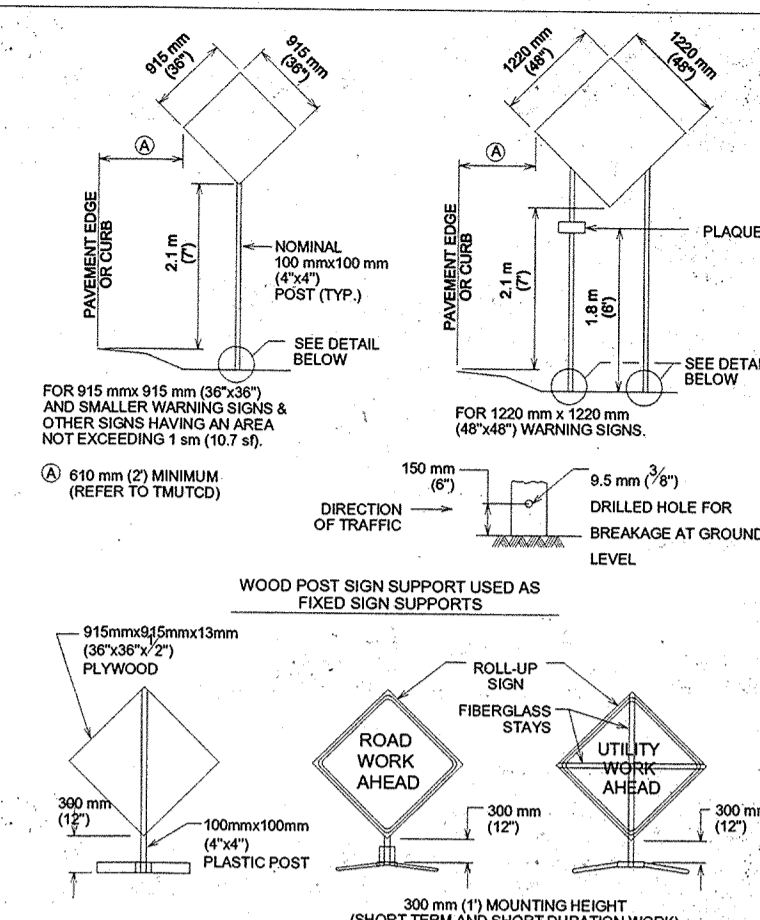
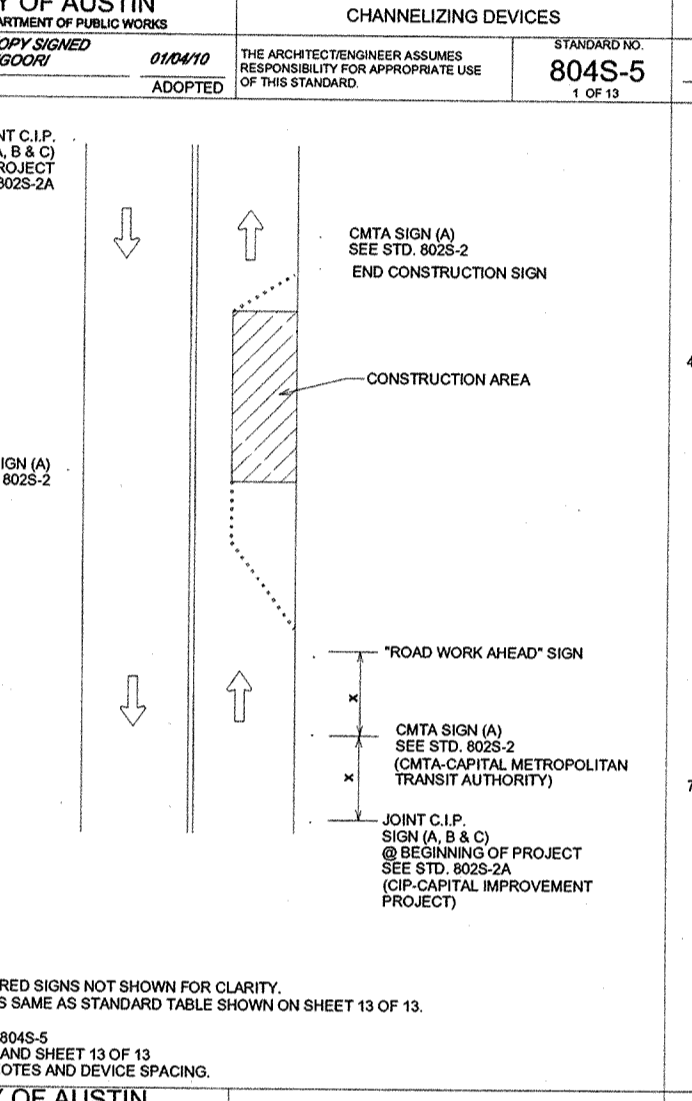
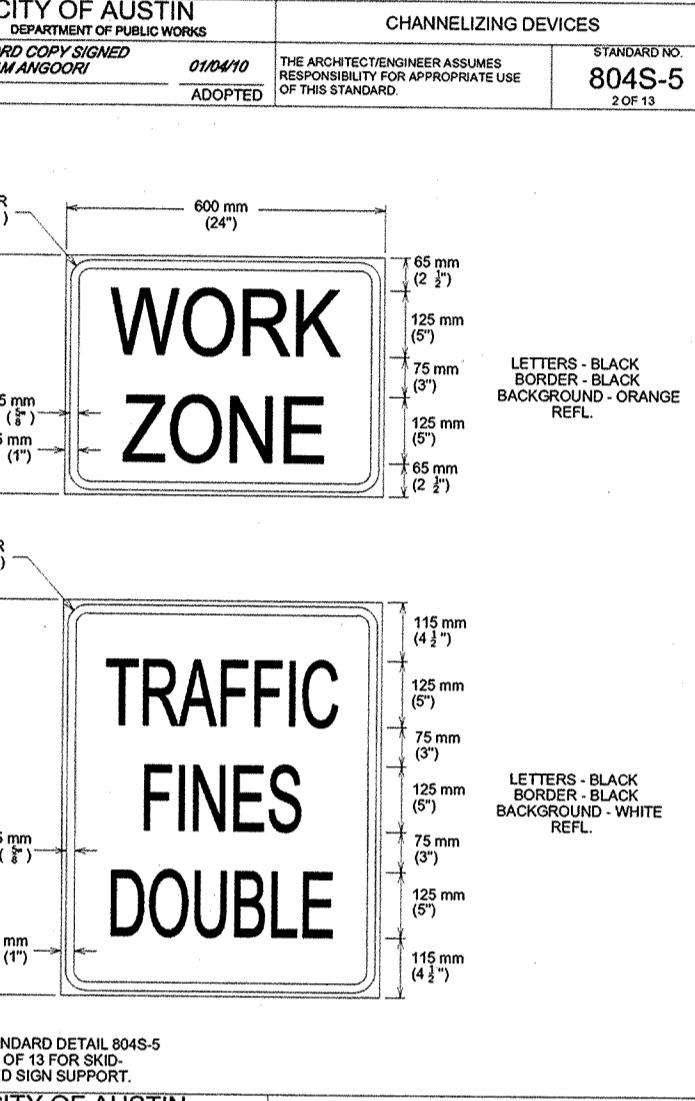
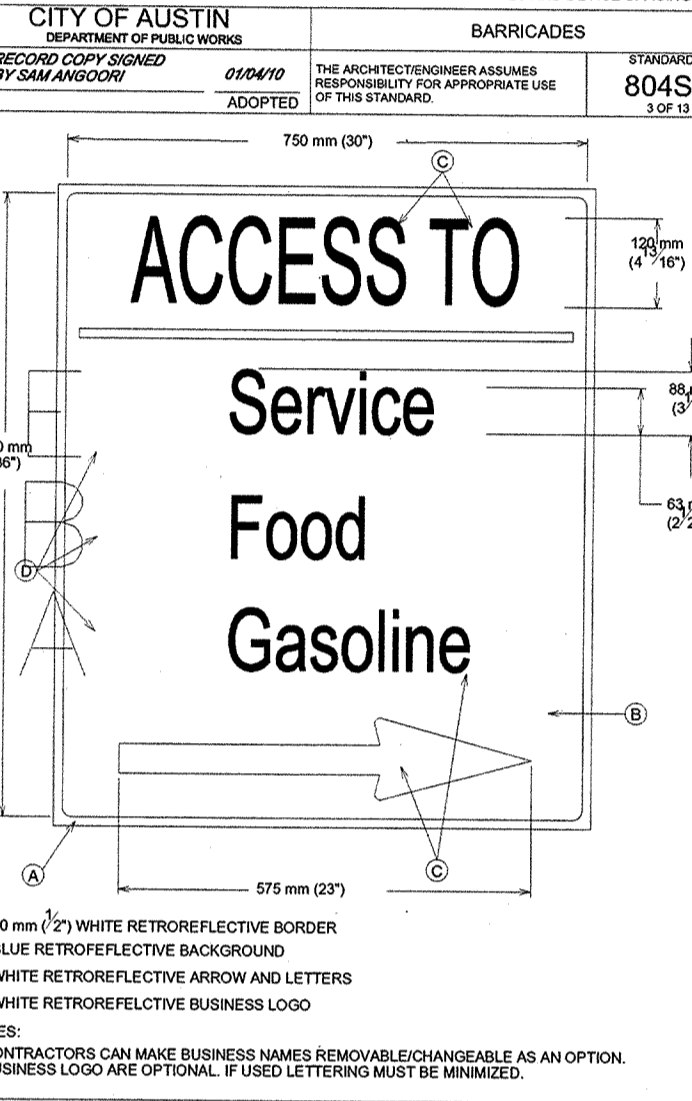
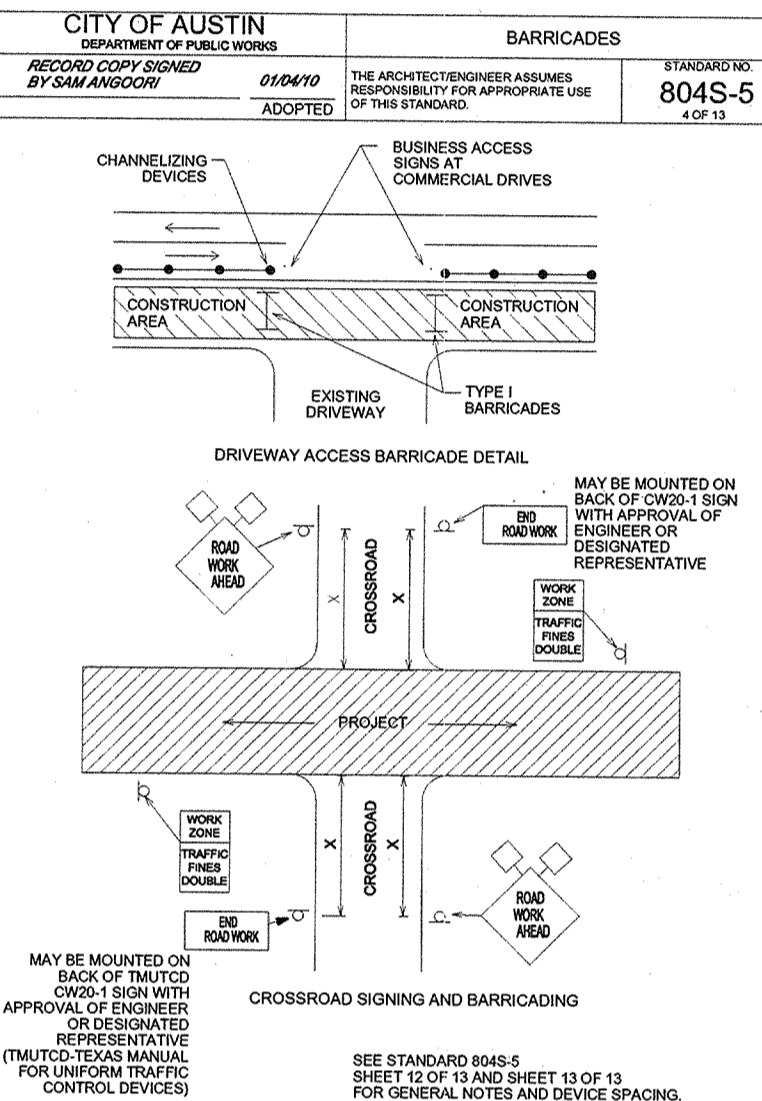
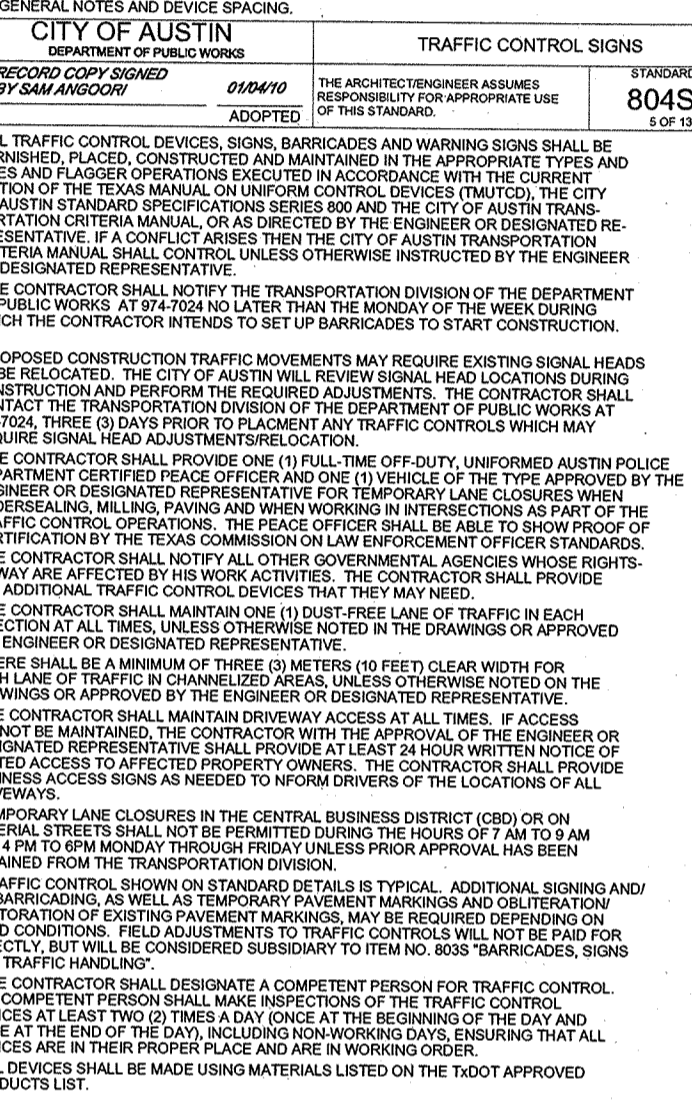
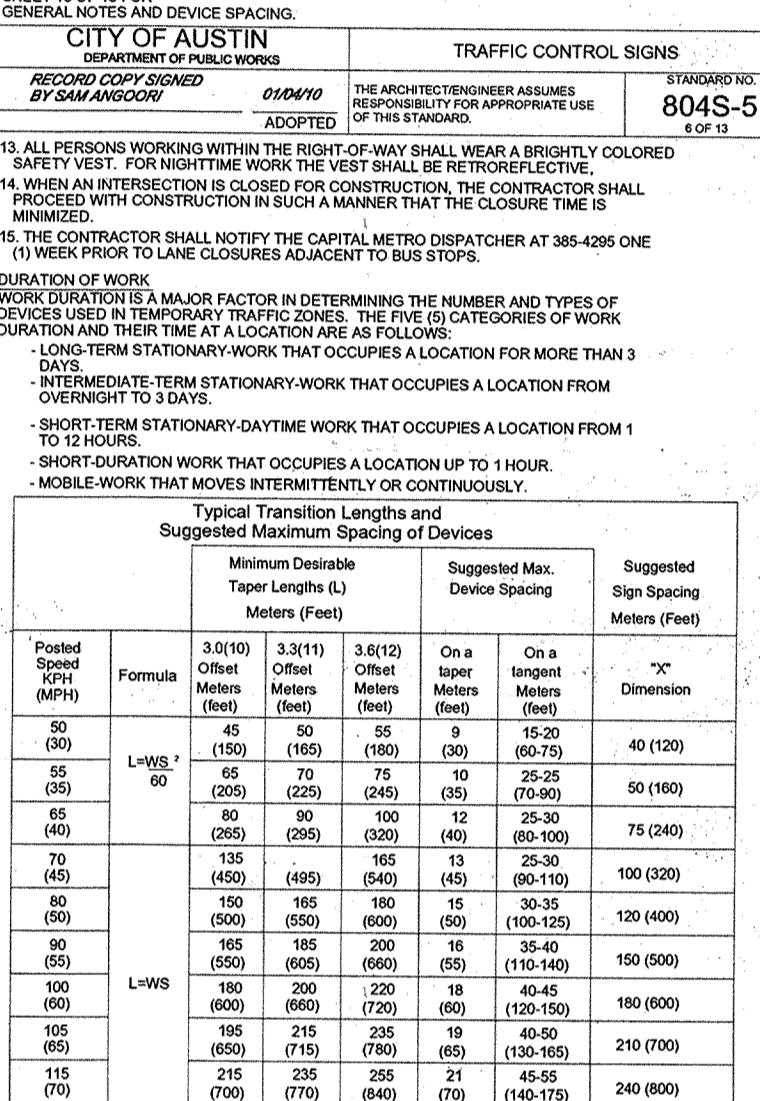


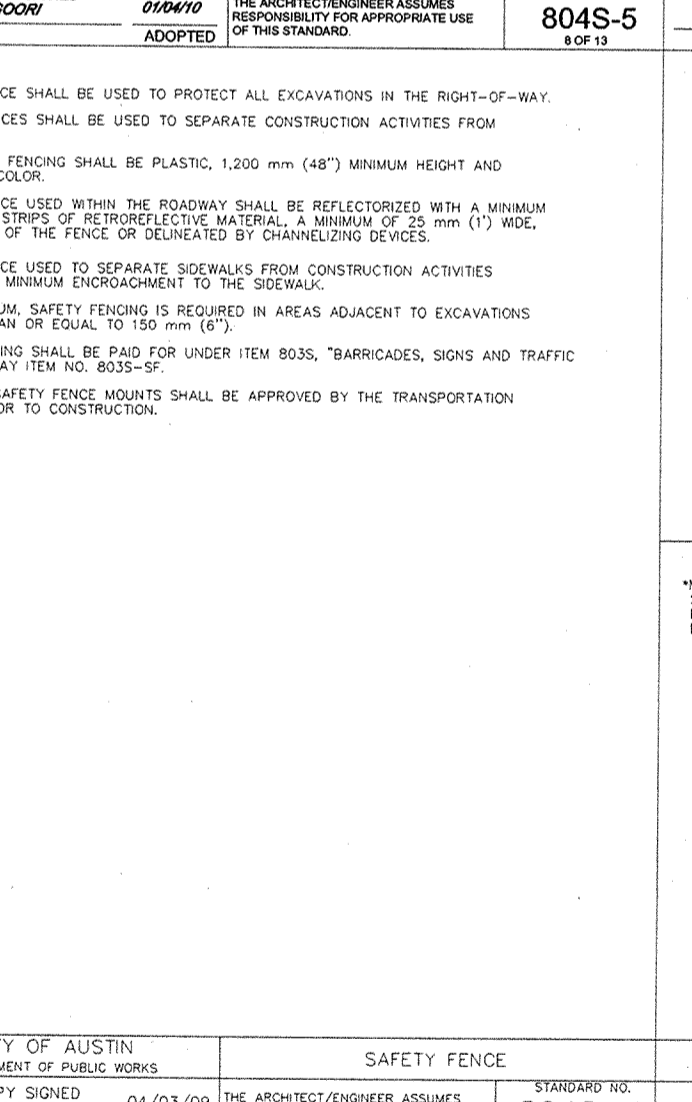
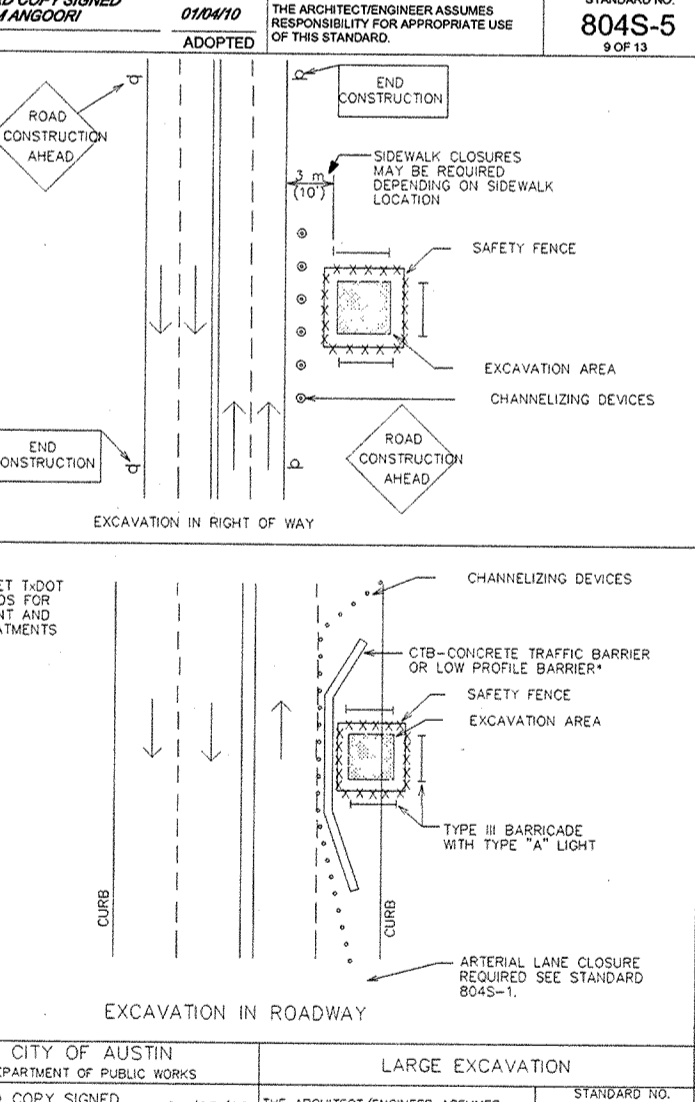
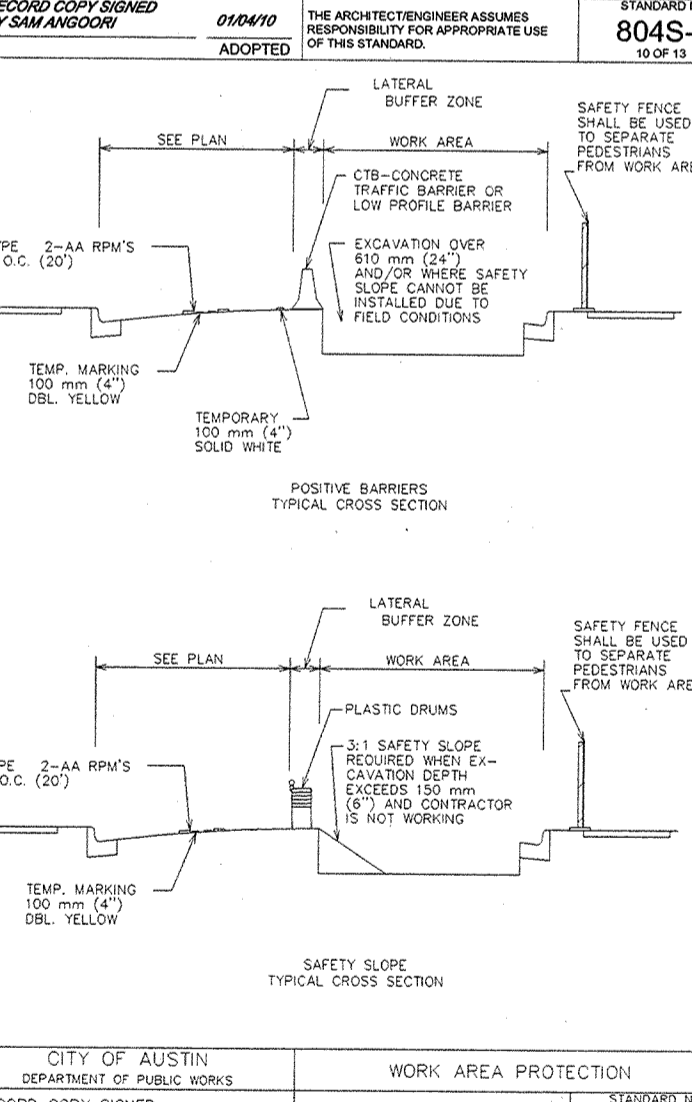
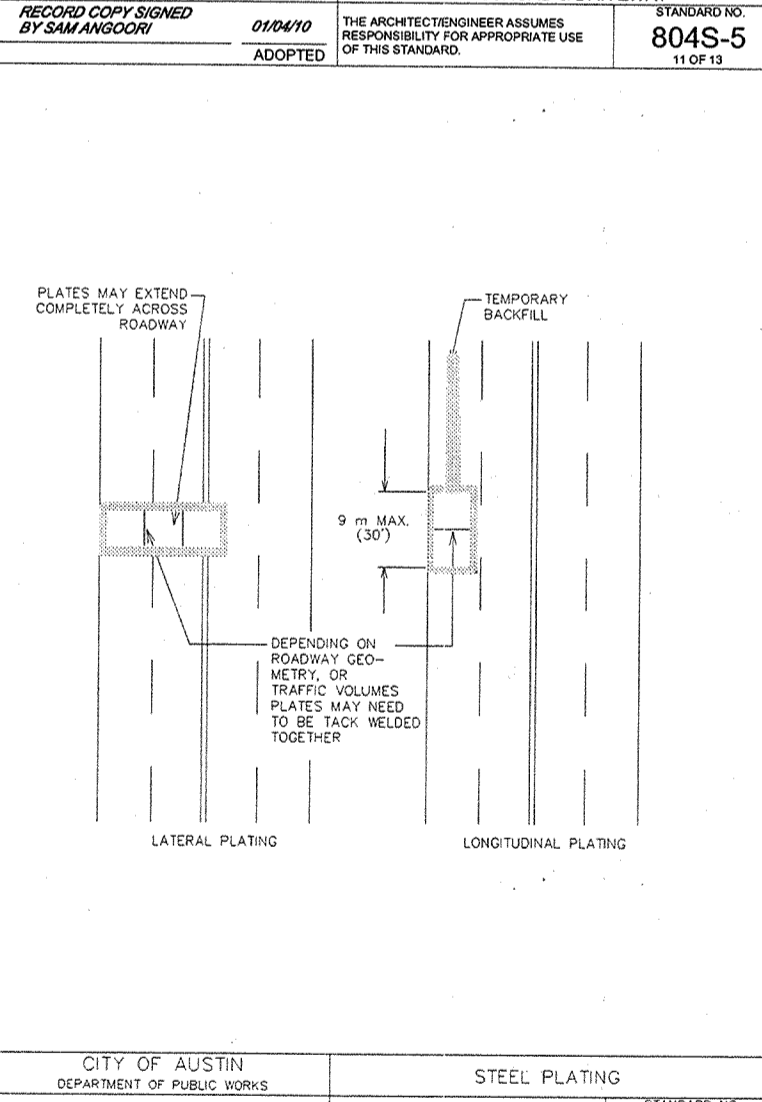
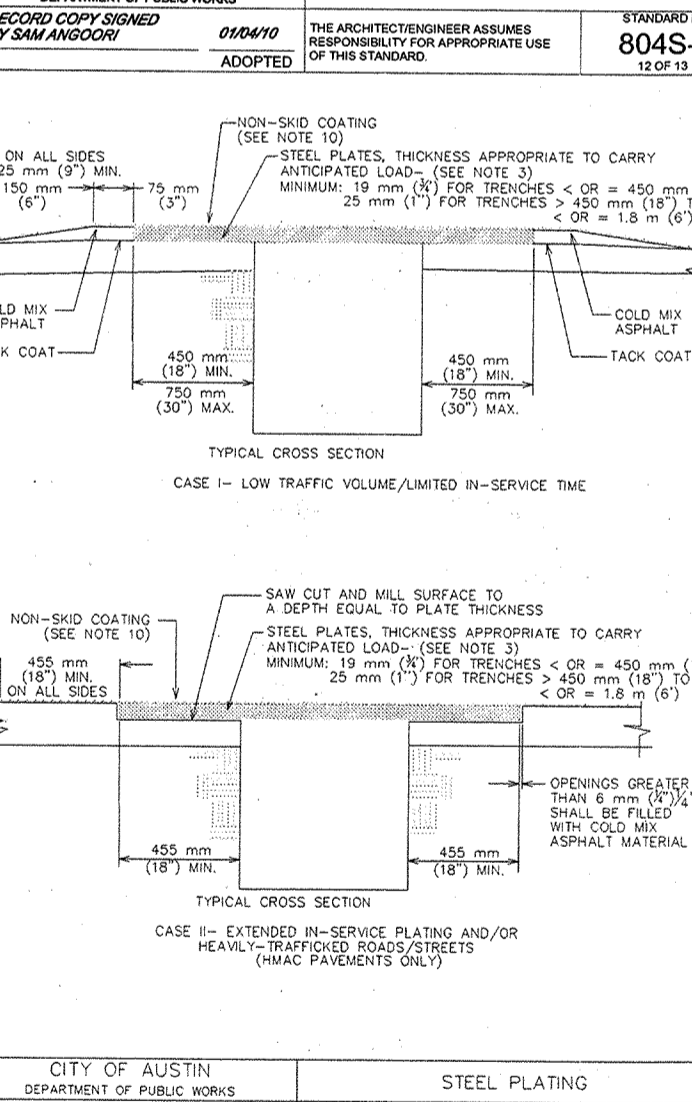
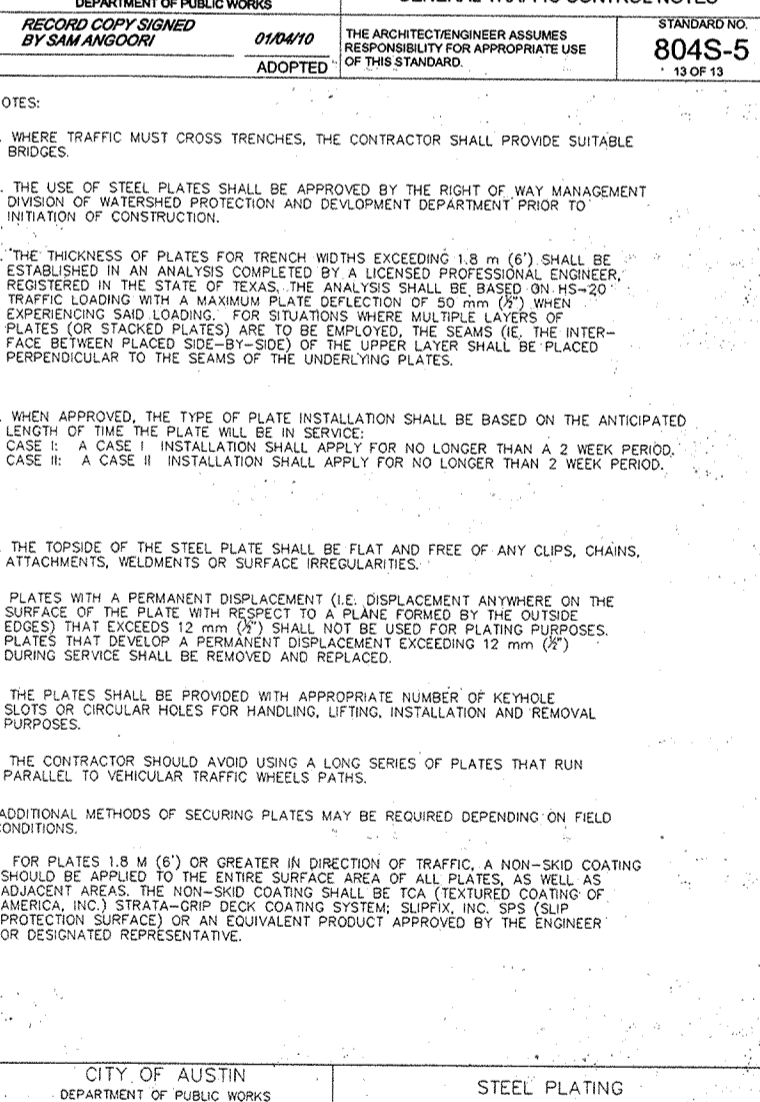
Sign Type	Sign Size (mm)	Spacing (mm)	Notes
1. WARNING SIGN	300 (12")	300 (12")	1. SIGN SHALL BE PLACED IN BOTH DIRECTIONS OF TRAVEL. 2. SIGN SHALL BE PLACED IN BOTH DIRECTIONS OF TRAVEL. 3. SIGN SHALL BE PLACED IN BOTH DIRECTIONS OF TRAVEL.
2. STOP SIGN	300 (12")	300 (12")	1. SIGN SHALL BE PLACED IN BOTH DIRECTIONS OF TRAVEL. 2. SIGN SHALL BE PLACED IN BOTH DIRECTIONS OF TRAVEL. 3. SIGN SHALL BE PLACED IN BOTH DIRECTIONS OF TRAVEL.
3. AHEAD SIGN	300 (12")	300 (12")	1. SIGN SHALL BE PLACED IN BOTH DIRECTIONS OF TRAVEL. 2. SIGN SHALL BE PLACED IN BOTH DIRECTIONS OF TRAVEL. 3. SIGN SHALL BE PLACED IN BOTH DIRECTIONS OF TRAVEL.
4. ROAD WORK AHEAD SIGN	300 (12")	300 (12")	1. SIGN SHALL BE PLACED IN BOTH DIRECTIONS OF TRAVEL. 2. SIGN SHALL BE PLACED IN BOTH DIRECTIONS OF TRAVEL. 3. SIGN SHALL BE PLACED IN BOTH DIRECTIONS OF TRAVEL.
5. ROAD WORK AHEAD SIGN	300 (12")	300 (12")	1. SIGN SHALL BE PLACED IN BOTH DIRECTIONS OF TRAVEL. 2. SIGN SHALL BE PLACED IN BOTH DIRECTIONS OF TRAVEL. 3. SIGN SHALL BE PLACED IN BOTH DIRECTIONS OF TRAVEL.



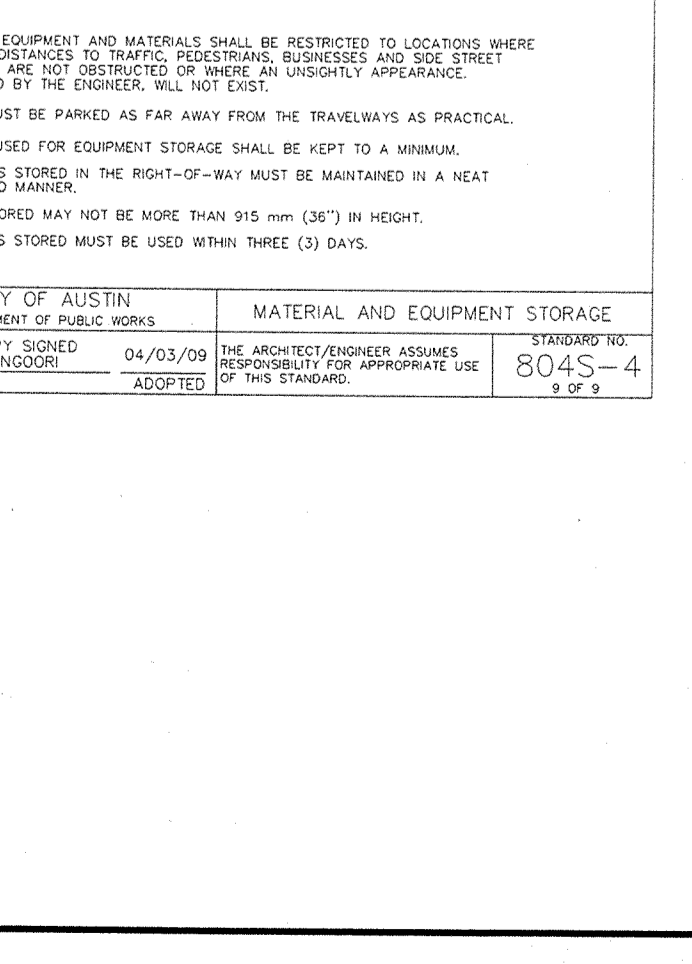
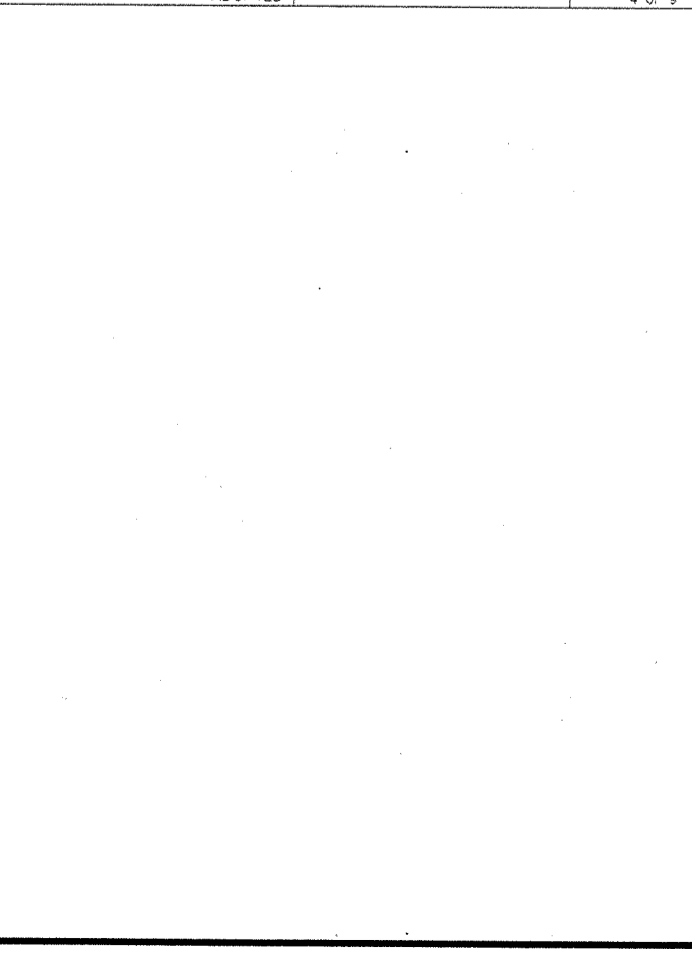
CITY OF AUSTIN DEPARTMENT OF PUBLIC WORKS	RECORD COPY SIGNED BY SAM ANDGORN	DATE	APPROVED	ARCHITECT/ENGINEER ASSUMES RESPONSIBILITY FOR APPROPRIATE USE OF THIS STANDARD	STANDARD NO.	REVISIONS
CITY OF AUSTIN DEPARTMENT OF PUBLIC WORKS	RECORD COPY SIGNED BY SAM ANDGORN	04/03/09	ADOPTED	ARCHITECT/ENGINEER ASSUMES RESPONSIBILITY FOR APPROPRIATE USE OF THIS STANDARD	804S-5	1 OF 13
CITY OF AUSTIN DEPARTMENT OF PUBLIC WORKS	RECORD COPY SIGNED BY SAM ANDGORN	04/03/09	ADOPTED	ARCHITECT/ENGINEER ASSUMES RESPONSIBILITY FOR APPROPRIATE USE OF THIS STANDARD	804S-5	2 OF 13
CITY OF AUSTIN DEPARTMENT OF PUBLIC WORKS	RECORD COPY SIGNED BY SAM ANDGORN	04/03/09	ADOPTED	ARCHITECT/ENGINEER ASSUMES RESPONSIBILITY FOR APPROPRIATE USE OF THIS STANDARD	804S-5	3 OF 13
CITY OF AUSTIN DEPARTMENT OF PUBLIC WORKS	RECORD COPY SIGNED BY SAM ANDGORN	04/03/09	ADOPTED	ARCHITECT/ENGINEER ASSUMES RESPONSIBILITY FOR APPROPRIATE USE OF THIS STANDARD	804S-5	4 OF 13
CITY OF AUSTIN DEPARTMENT OF PUBLIC WORKS	RECORD COPY SIGNED BY SAM ANDGORN	04/03/09	ADOPTED	ARCHITECT/ENGINEER ASSUMES RESPONSIBILITY FOR APPROPRIATE USE OF THIS STANDARD	804S-5	5 OF 13
CITY OF AUSTIN DEPARTMENT OF PUBLIC WORKS	RECORD COPY SIGNED BY SAM ANDGORN	04/03/09	ADOPTED	ARCHITECT/ENGINEER ASSUMES RESPONSIBILITY FOR APPROPRIATE USE OF THIS STANDARD	804S-5	6 OF 13
CITY OF AUSTIN DEPARTMENT OF PUBLIC WORKS	RECORD COPY SIGNED BY SAM ANDGORN	04/03/09	ADOPTED	ARCHITECT/ENGINEER ASSUMES RESPONSIBILITY FOR APPROPRIATE USE OF THIS STANDARD	804S-5	7 OF 13
CITY OF AUSTIN DEPARTMENT OF PUBLIC WORKS	RECORD COPY SIGNED BY SAM ANDGORN	04/03/09	ADOPTED	ARCHITECT/ENGINEER ASSUMES RESPONSIBILITY FOR APPROPRIATE USE OF THIS STANDARD	804S-5	8 OF 13
CITY OF AUSTIN DEPARTMENT OF PUBLIC WORKS	RECORD COPY SIGNED BY SAM ANDGORN	04/03/09	ADOPTED	ARCHITECT/ENGINEER ASSUMES RESPONSIBILITY FOR APPROPRIATE USE OF THIS STANDARD	804S-5	9 OF 13
CITY OF AUSTIN DEPARTMENT OF PUBLIC WORKS	RECORD COPY SIGNED BY SAM ANDGORN	04/03/09	ADOPTED	ARCHITECT/ENGINEER ASSUMES RESPONSIBILITY FOR APPROPRIATE USE OF THIS STANDARD	804S-5	10 OF 13
CITY OF AUSTIN DEPARTMENT OF PUBLIC WORKS	RECORD COPY SIGNED BY SAM ANDGORN	04/03/09	ADOPTED	ARCHITECT/ENGINEER ASSUMES RESPONSIBILITY FOR APPROPRIATE USE OF THIS STANDARD	804S-5	11 OF 13
CITY OF AUSTIN DEPARTMENT OF PUBLIC WORKS	RECORD COPY SIGNED BY SAM ANDGORN	04/03/09	ADOPTED	ARCHITECT/ENGINEER ASSUMES RESPONSIBILITY FOR APPROPRIATE USE OF THIS STANDARD	804S-5	12 OF 13
CITY OF AUSTIN DEPARTMENT OF PUBLIC WORKS	RECORD COPY SIGNED BY SAM ANDGORN	04/03/09	ADOPTED	ARCHITECT/ENGINEER ASSUMES RESPONSIBILITY FOR APPROPRIATE USE OF THIS STANDARD	804S-5	13 OF 13



CITY OF AUSTIN DEPARTMENT OF PUBLIC WORKS	RECORD COPY SIGNED BY SAM ANDGORN	DATE	APPROVED	ARCHITECT/ENGINEER ASSUMES RESPONSIBILITY FOR APPROPRIATE USE OF THIS STANDARD	STANDARD NO.	REVISIONS
CITY OF AUSTIN DEPARTMENT OF PUBLIC WORKS	RECORD COPY SIGNED BY SAM ANDGORN	04/03/09	ADOPTED	ARCHITECT/ENGINEER ASSUMES RESPONSIBILITY FOR APPROPRIATE USE OF THIS STANDARD	804S-4	1 OF 9
CITY OF AUSTIN DEPARTMENT OF PUBLIC WORKS	RECORD COPY SIGNED BY SAM ANDGORN	04/03/09	ADOPTED	ARCHITECT/ENGINEER ASSUMES RESPONSIBILITY FOR APPROPRIATE USE OF THIS STANDARD	804S-4	2 OF 9
CITY OF AUSTIN DEPARTMENT OF PUBLIC WORKS	RECORD COPY SIGNED BY SAM ANDGORN	04/03/09	ADOPTED	ARCHITECT/ENGINEER ASSUMES RESPONSIBILITY FOR APPROPRIATE USE OF THIS STANDARD	804S-4	3 OF 9
CITY OF AUSTIN DEPARTMENT OF PUBLIC WORKS	RECORD COPY SIGNED BY SAM ANDGORN	04/03/09	ADOPTED	ARCHITECT/ENGINEER ASSUMES RESPONSIBILITY FOR APPROPRIATE USE OF THIS STANDARD	804S-4	4 OF 9
CITY OF AUSTIN DEPARTMENT OF PUBLIC WORKS	RECORD COPY SIGNED BY SAM ANDGORN	04/03/09	ADOPTED	ARCHITECT/ENGINEER ASSUMES RESPONSIBILITY FOR APPROPRIATE USE OF THIS STANDARD	804S-4	5 OF 9
CITY OF AUSTIN DEPARTMENT OF PUBLIC WORKS	RECORD COPY SIGNED BY SAM ANDGORN	04/03/09	ADOPTED	ARCHITECT/ENGINEER ASSUMES RESPONSIBILITY FOR APPROPRIATE USE OF THIS STANDARD	804S-4	6 OF 9
CITY OF AUSTIN DEPARTMENT OF PUBLIC WORKS	RECORD COPY SIGNED BY SAM ANDGORN	04/03/09	ADOPTED	ARCHITECT/ENGINEER ASSUMES RESPONSIBILITY FOR APPROPRIATE USE OF THIS STANDARD	804S-4	7 OF 9
CITY OF AUSTIN DEPARTMENT OF PUBLIC WORKS	RECORD COPY SIGNED BY SAM ANDGORN	04/03/09	ADOPTED	ARCHITECT/ENGINEER ASSUMES RESPONSIBILITY FOR APPROPRIATE USE OF THIS STANDARD	804S-4	8 OF 9
CITY OF AUSTIN DEPARTMENT OF PUBLIC WORKS	RECORD COPY SIGNED BY SAM ANDGORN	04/03/09	ADOPTED	ARCHITECT/ENGINEER ASSUMES RESPONSIBILITY FOR APPROPRIATE USE OF THIS STANDARD	804S-4	9 OF 9



CITY OF AUSTIN DEPARTMENT OF PUBLIC WORKS	RECORD COPY SIGNED BY SAM ANDGORN	DATE	APPROVED	ARCHITECT/ENGINEER ASSUMES RESPONSIBILITY FOR APPROPRIATE USE OF THIS STANDARD	STANDARD NO.	REVISIONS
CITY OF AUSTIN DEPARTMENT OF PUBLIC WORKS	RECORD COPY SIGNED BY SAM ANDGORN	04/03/09	ADOPTED	ARCHITECT/ENGINEER ASSUMES RESPONSIBILITY FOR APPROPRIATE USE OF THIS STANDARD	804S-4	1 OF 9
CITY OF AUSTIN DEPARTMENT OF PUBLIC WORKS	RECORD COPY SIGNED BY SAM ANDGORN	04/03/09	ADOPTED	ARCHITECT/ENGINEER ASSUMES RESPONSIBILITY FOR APPROPRIATE USE OF THIS STANDARD	804S-4	2 OF 9
CITY OF AUSTIN DEPARTMENT OF PUBLIC WORKS	RECORD COPY SIGNED BY SAM ANDGORN	04/03/09	ADOPTED	ARCHITECT/ENGINEER ASSUMES RESPONSIBILITY FOR APPROPRIATE USE OF THIS STANDARD	804S-4	3 OF 9
CITY OF AUSTIN DEPARTMENT OF PUBLIC WORKS	RECORD COPY SIGNED BY SAM ANDGORN	04/03/09	ADOPTED	ARCHITECT/ENGINEER ASSUMES RESPONSIBILITY FOR APPROPRIATE USE OF THIS STANDARD	804S-4	4 OF 9
CITY OF AUSTIN DEPARTMENT OF PUBLIC WORKS	RECORD COPY SIGNED BY SAM ANDGORN	04/03/09	ADOPTED	ARCHITECT/ENGINEER ASSUMES RESPONSIBILITY FOR APPROPRIATE USE OF THIS STANDARD	804S-4	5 OF 9
CITY OF AUSTIN DEPARTMENT OF PUBLIC WORKS	RECORD COPY SIGNED BY SAM ANDGORN	04/03/09	ADOPTED	ARCHITECT/ENGINEER ASSUMES RESPONSIBILITY FOR APPROPRIATE USE OF THIS STANDARD	804S-4	6 OF 9
CITY OF AUSTIN DEPARTMENT OF PUBLIC WORKS	RECORD COPY SIGNED BY SAM ANDGORN	04/03/09	ADOPTED	ARCHITECT/ENGINEER ASSUMES RESPONSIBILITY FOR APPROPRIATE USE OF THIS STANDARD	804S-4	7 OF 9
CITY OF AUSTIN DEPARTMENT OF PUBLIC WORKS	RECORD COPY SIGNED BY SAM ANDGORN	04/03/09	ADOPTED	ARCHITECT/ENGINEER ASSUMES RESPONSIBILITY FOR APPROPRIATE USE OF THIS STANDARD	804S-4	8 OF 9
CITY OF AUSTIN DEPARTMENT OF PUBLIC WORKS	RECORD COPY SIGNED BY SAM ANDGORN	04/03/09	ADOPTED	ARCHITECT/ENGINEER ASSUMES RESPONSIBILITY FOR APPROPRIATE USE OF THIS STANDARD	804S-4	9 OF 9



1. STORAGE OF EQUIPMENT AND MATERIALS SHALL BE RESTRICTED TO LOCATIONS WHERE OTHER SIGNAGE IS NOT OBLITERATED OR WHERE AN UNSIGHTLY APPEARANCE AS DETERMINED BY THE ENGINEER WILL NOT EXIST.

2. EQUIPMENT MUST BE PARKED AS FAR AWAY FROM THE TRAVELWAYS AS PRACTICAL.

3. TOTAL AREA USED FOR EQUIPMENT STORAGE SHALL BE KEPT TO A MINIMUM.

4. ALL MATERIALS STORED IN THE RIGHT-OF-WAY MUST BE MAINTAINED IN A NEAT AND ORGANIZED MANNER.

5. MATERIALS STORED MAY NOT BE MORE THAN 915 mm (36") IN HEIGHT.

6. ALL MATERIALS STORED MUST BE USED WITHIN THREE (3) DAYS.