



OFFICE OF SPECIAL EVENTS
 200 South Lamar, Austin, Texas 78704
 (512)974-6797 (512) 974-6756 Fax
reservations@austintexas.gov
<http://www.austintexas.gov/parkevents>

Event Information - Plan Ahead!

This information is provided as a courtesy to allow interested parties to plan ahead!

Proposed Event Information	
Event Day(s):	May 23 (rain date: June 6) June 13 (rain date: June 20) July 18 (rain date: July 25) August 8 (rain date: August 15)
Event Time(s): Music Hours:	8 pm – 10 pm
Location Name & Address:	Zilker Metropolitan Park - Great Lawn Park remains open, unfenced.
Resource Information Bookmark these sites!	
Check park or street event calendars here..	www.austintexas.gov/citystage : Street and park events (street impacts) www.austintexas.gov/parkevents : Park events (only)
Event website:	http://www.kgsr.com/promotions/blues-on-the-green-home
Park Impact and Access	
Will the park be closed to the public for this event?	This event is defined as: In Use – no fences, no barriers, significant portion of the park reserved/impacted by the event. Includes increased pedestrian and vehicular activity.
Barton Springs Pool:	<ul style="list-style-type: none"> Barton Springs Pool is OPEN during regular hours. Parking access is via the “southgate” entrance on Robert E Lee Road. Parking is protected by security to prevent overparking by event attendees.
Open and Alternative Use Areas	<ul style="list-style-type: none"> OPEN AREAS Zilker Park – Rugby Field, Picnic Areas, parking lots, Playscape (South of Barton Springs Road). At approximately 4 pm, parking charges will commence for the special event. Only a portion of the Great Lawn is used for seating. In addition, Auditorium Shores and Butler Park will be open at all times for park users.
Road Closures	<ul style="list-style-type: none"> A safety closure is enacted at night after 9 pm on Barton Springs Road to help quickly exit patrons from the site. The safety closure opens no later than 11 pm. Closure area is Barton Springs from Mopac to Sterzing.

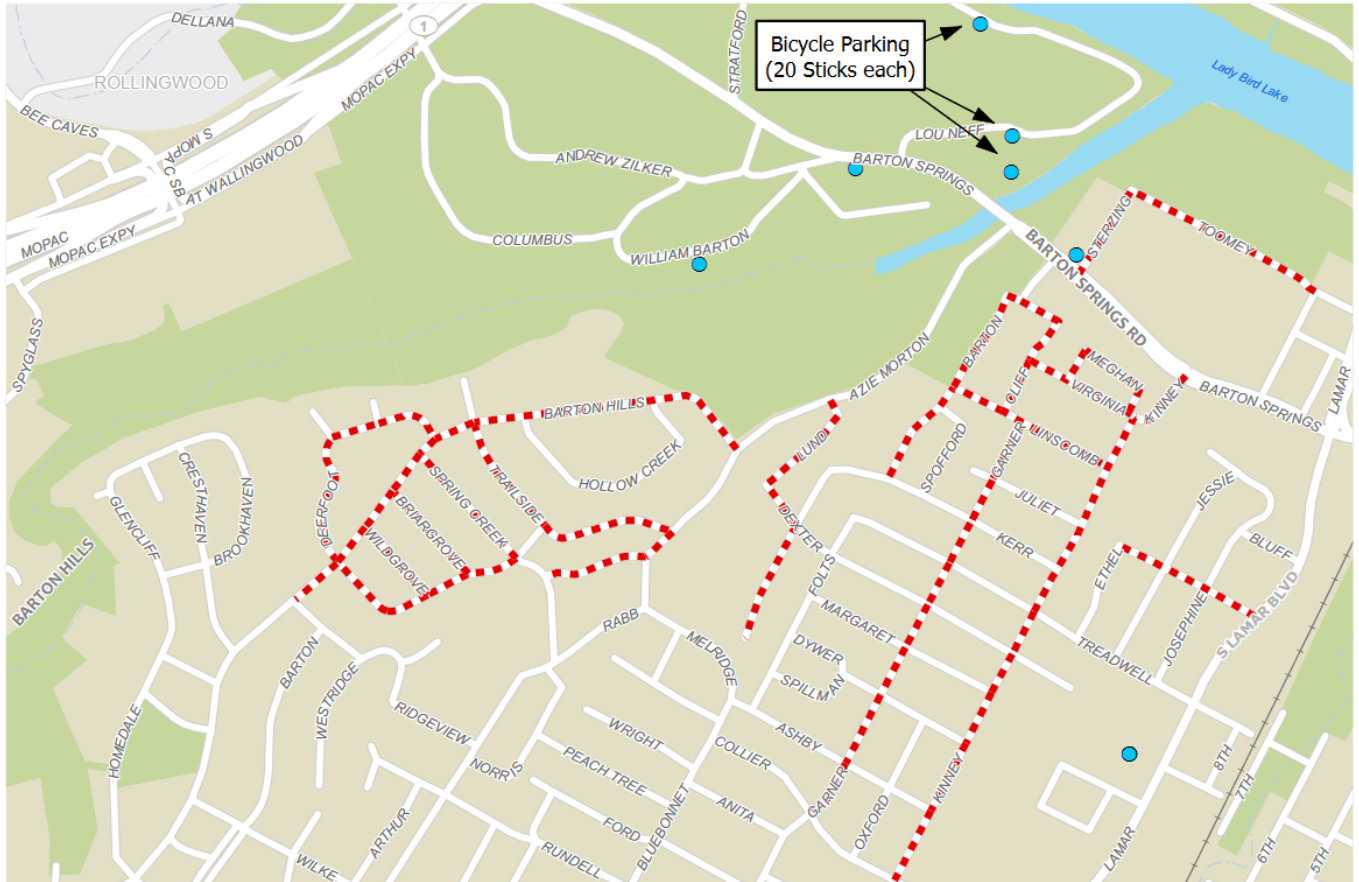


OFFICE OF SPECIAL EVENTS
 200 South Lamar, Austin, Texas 78704
 (512)974-6797 (512) 974-6756 Fax
reservations@austintexas.gov
<http://www.austintexas.gov/parkevents>

Impact Planning/Mitigation:	
Neighborhood Patrol	Dedicated APD officers are patrolling and ticketing the event and surrounding area.
Neighborhood Call-In Line	311
Parking, and No Parking Zones	<ul style="list-style-type: none"> • Parking Restrictions ARE in effect. Planned zones are included in the following areas: <ul style="list-style-type: none"> ○ Zilker Neighborhood ○ Barton Hills Neighborhood
General Violations	Examples of what to call in... <ul style="list-style-type: none"> • Parking within 30' of the approach to a stop sign. • Parking or blocking within 15' of a fire hydrant. • Parking left wheel to curb. (cars parked facing against traffic). • If a car blocks YOUR driveway. Some neighbors may permit people to block their OWN driveway. • Illegal vending/sales questions in the immediate festival area.
Attendee Information:	
See the event website for a detailed list of allowed/prohibited items!	
Smoking and Alcohol	<ul style="list-style-type: none"> • Smoking and vaping in all city parks is prohibited by law, a Class C Misdemeanor.
Vending and/or Commercial Activity	<ul style="list-style-type: none"> • All vending/commercial activity in the park requires a permit. • Violation during a special event is a minimum \$200 fine, Class C Misdemeanor. (event with 1000 or more people)
General Park Information	<ul style="list-style-type: none"> • No glass allowed, no glass containers. • No Styrofoam
Parking:	<ul style="list-style-type: none"> • Parking overview map
Shuttles:	<ul style="list-style-type: none"> • A shuttle is running from the Endeavor Garages on 22/44 to the park.
QUESTIONS?	
Event questions?	Questions regarding the event permit, process or regulatory information please contact: <ul style="list-style-type: none"> • Park Related: <ul style="list-style-type: none"> • reservations@austintexas.gov • Transportation Related: <ul style="list-style-type: none"> • TransportationSpecialEvents@austintexas.gov • Other general inquiries: <ul style="list-style-type: none"> • SpecialEvents@austintexas.gov
For questions regarding the event, contact the Event Organizer.	



OFFICE OF SPECIAL EVENTS
 200 South Lamar, Austin, Texas 78704
 (512)974-6797 (512) 974-6756 Fax
reservations@austintexas.gov
<http://www.austintexas.gov/parkevents>



City of Austin Office of Special Events

BLUES ON THE GREEN

Towing Enforced: 4PM - 10PM

Event: 8PM - 10PM

May through August, 2018

Please consider using alternate forms of transportation to and from the event.

--- No Parking

● Bike Parking

Paid Parking Available in Polo Field Lot and surrounding garages



0 250 500 1,000 Feet

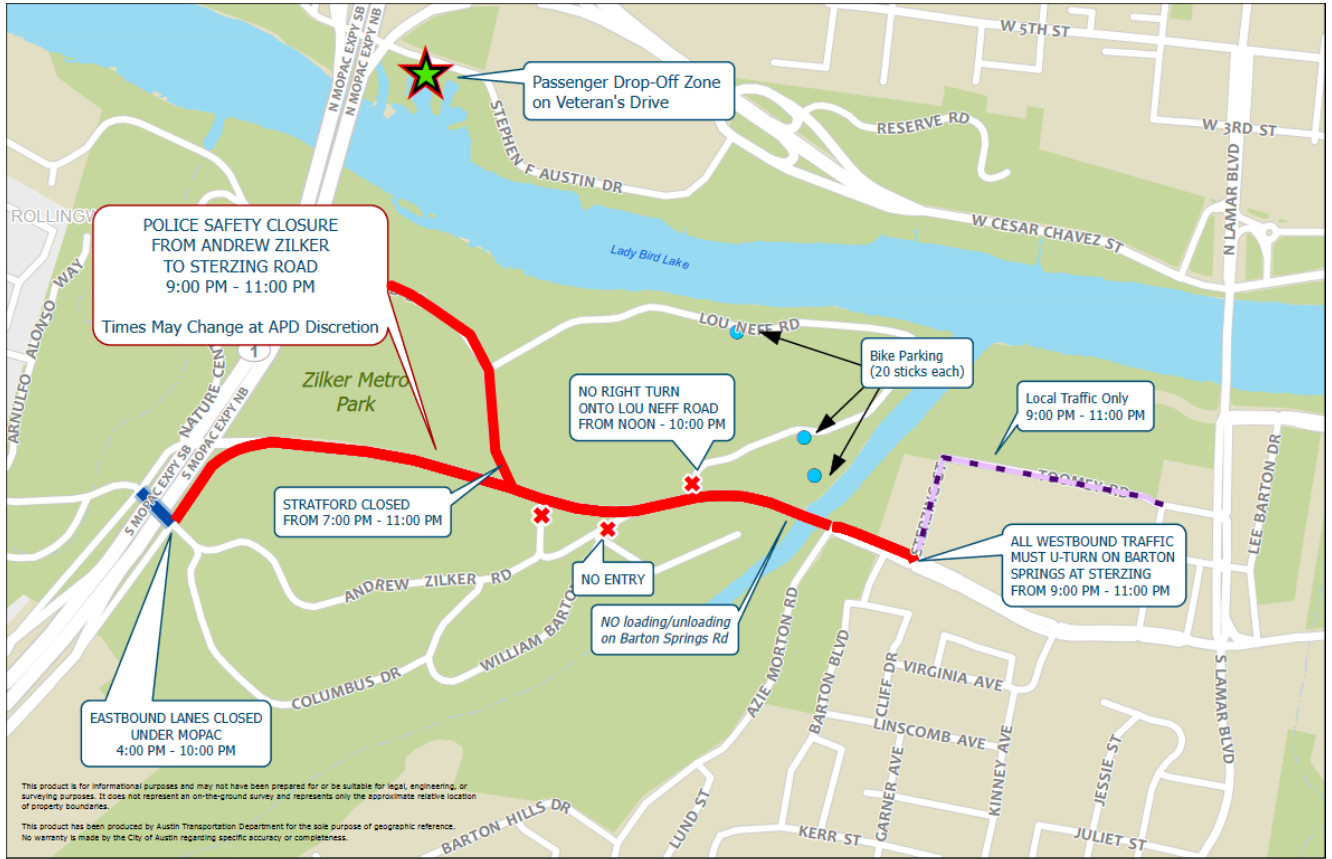
This product is for informational purposes and may not have been prepared for or be suitable for legal, engineering, or surveying purposes. It does not represent an on-the-ground survey and represents only the approximate relative location of property boundaries.

This product has been produced by Austin Transportation Department for the sole purpose of geographic reference. No warranty is made by the City of Austin regarding specific accuracy or completeness.

Map Print Date: 5/17/2018



OFFICE OF SPECIAL EVENTS
 200 South Lamar, Austin, Texas 78704
 (512)974-6797 (512) 974-6756 Fax
reservations@austintexas.gov
<http://www.austintexas.gov/parkevents>



This product is for informational purposes and may not have been prepared for or be suitable for legal, engineering, or surveying purposes. It does not represent an on-the-ground survey and represents only the approximate relative location of property boundaries.
 This product has been produced by Austin Transportation Department for the sole purpose of geographic reference. No warranty is made by the City of Austin regarding specific accuracy or completeness.

- LOCAL TRAFFIC ONLY
- EASTBOUND LANES CLOSED
- POLICE SAFETY CLOSURE, TIMES MAY CHANGE AT APD DISCRETION
- BICYCLE PARKING

Please consider using alternate forms of transportation to and from the event.

EVENT DATES:
 5/23, 6/13, 7/18, 8/8 2018
RAIN DATES:
 6/6, 6/20, 7/25, 8/15

0 500 1,000 2,000 Feet

City of Austin
 Office of Special Events
BLUES ON THE GREEN
 EVENT: 8PM - 10PM
 SAFETY CLOSURE: 9PM - 11PM
 Map Print Date: 5/17/2018

