



Interactive 2017 Zilker Park Area Schedules **(Click on the DATE RANGE to view the appropriate map)**

Maintenance Week and Transition Period

[October 28 – November 1](#) [Transition Period](#)

Trail of Lights

[November 2 – 15](#) [Load In Period](#)

[November 16 – December 1](#) [Load In Period](#)

[December 2-23](#) [Load in \(cont.\) and event period](#)

(Event Days December 2 (fun run), and 9-23 are public event nights within this period.)

2017 Zilker Park Area OPEN Area Schedule at a Glance

All subject to weather conditions during the subject time period.

Trail of Lights Festival (Event Nights Dec 2, and 9-23)

Time Period
Oct. 28 – Nov 1
[Main Menu](#)

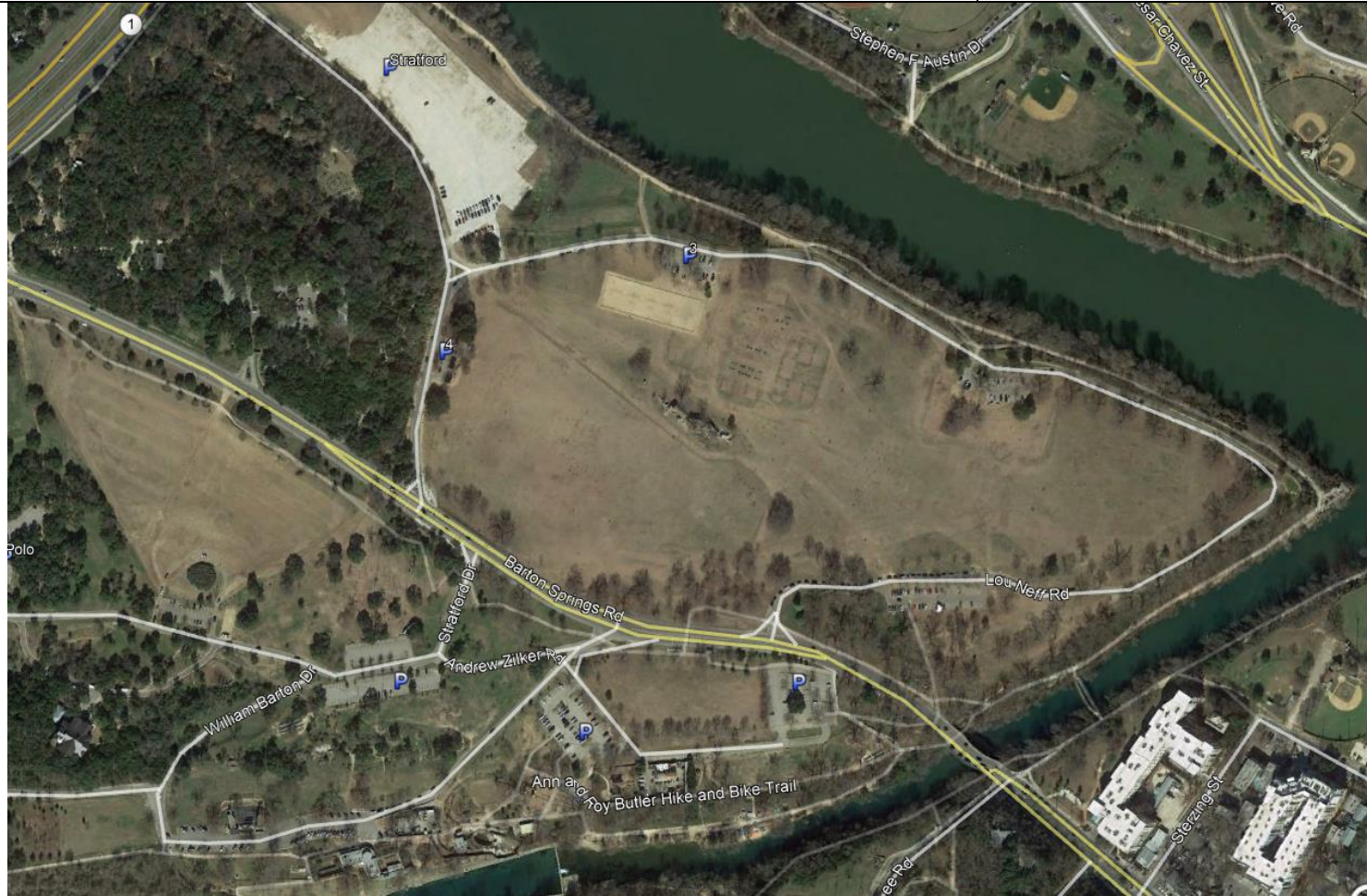
Areas Open:

Great Lawn, Picnic Areas, Rugby Field, Polo Field, Playscape, Greenbelt, Stratford Field

Facilities Open:

McBeth, Zilker Botanical Garden, Austin Nature and Science Center, Barton Springs Pool

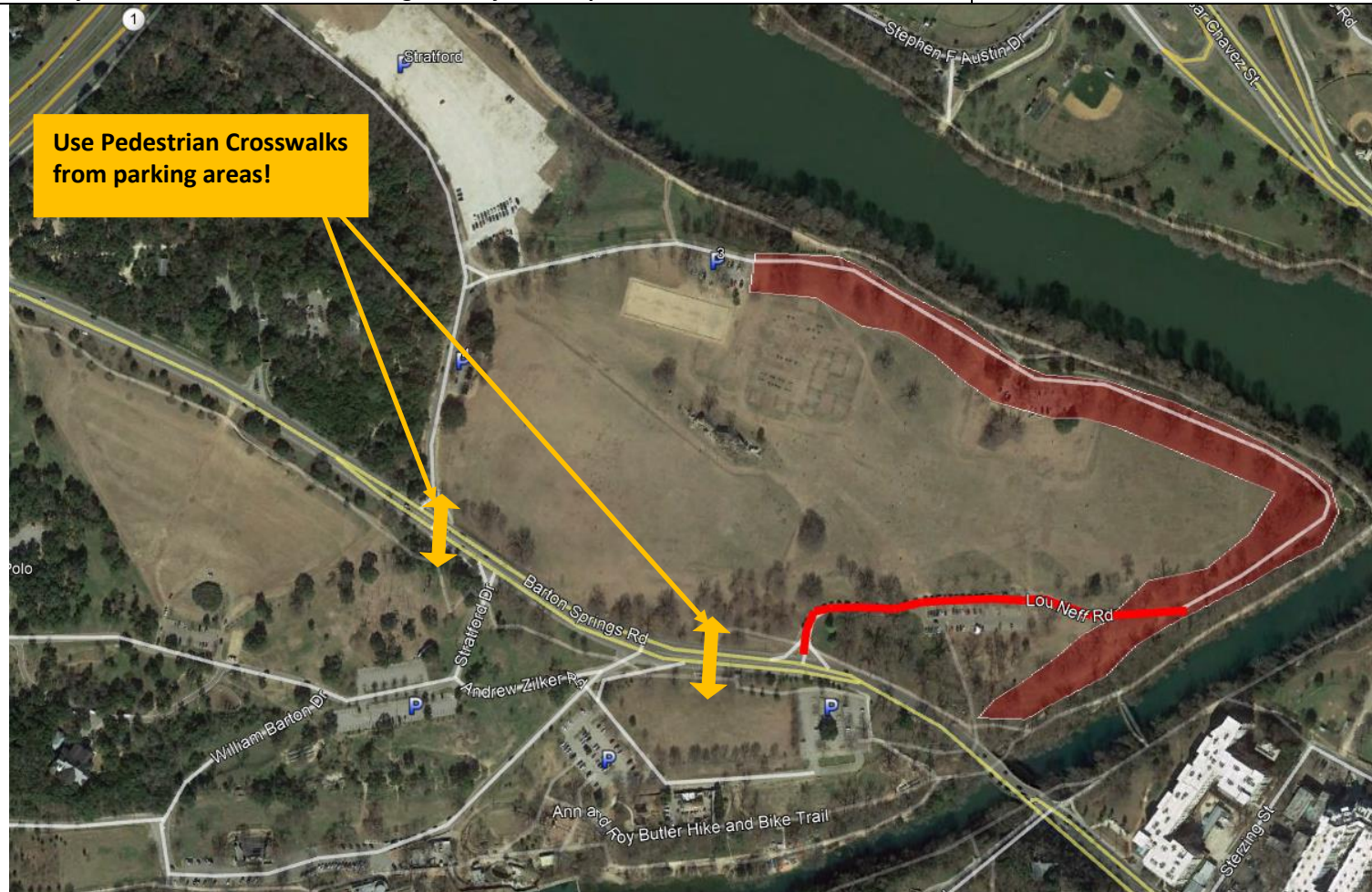
Park Access: Utilize all north and south side main park entrances and parking areas, including Lou Neff. Parking Lot 2 along Lou Neff will be closed for equipment storage for Trail of Lights.



2017 Zilker Park Area OPEN Area Schedule at a Glance

All subject to weather conditions during the subject time period.

Trail of Lights Festival (Event Nights Dec 2, and 9-23)



Time Period

Nov. 2-15

[Main Menu](#)

Closed Areas in Red

Areas Open:

Picnic Areas, Rugby Field, Polo Field, Playscape, Greenbelt, Volleyball Courts, Great Lawn as shown

Facilities Open:

McBeth, Zilker Botanical Garden, Austin Nature and Science Center, Barton Springs Pool

Park Access: Utilize the south side park entrances and parking areas.

Road Closures:

Lou Neff - see red line

www.austintexas.gov/ace

Expect higher pedestrian/vehicular traffic in area.

2017 Zilker Park Area OPEN Area Schedule at a Glance

All subject to weather conditions during the subject time period.

Trail of Lights Festival (Event Nights Dec 2, and 9-23)



Use Pedestrian Crosswalks
from parking areas!

Time Period
Nov. 16 – Dec. 1
[Main Menu](#)

Closed Areas in Red

Areas Open:

Picnic Areas, Rugby Field, Polo Field, Playscape, Greenbelt, Great Lawn as shown

Facilities Open:

McBeth, Zilker Botanical Garden, Austin Nature and Science Center, Barton Springs Pool

Park Access: Utilize the south side main park entrances and parking areas.

Road Closures:

Lou Neff inside noted area.

www.austintexas.gov/ace

**Expect higher pedestrian/
vehicular traffic in area.**

2017 Zilker Park Area OPEN Area Schedule at a Glance

All subject to weather conditions during the subject time period.

Trail of Lights Festival (Event Nights Dec 2, and 9-23)

Time Period

Dec. 2-23

[Main Menu](#)



Closed Areas in Red

Areas Open:

After 4:30 pm – walk in access only.
Picnic Areas, Rugby Field, Playscape, Greenbelt, Great Lawn as shown. Prior to 4:30 pm - Stratford Field, Polo Field.

Facilities Open:

McBeth, Zilker Botanical Garden, Austin Nature and Science Center, Barton Springs Pool.

Park Access:

- 5 am – approx. 4:30 pm public parking
After 4:30 pm – permit parking only
- Use the south side main entrances and parking areas.
 - All cars must clear site by 5 pm if not with an event parking permit.

Road or Lane Closures Nightly:
Dec 2, and 9-23.

www.austintexas.gov/ace

see red lines

Expect higher pedestrian /vehicular traffic in area.