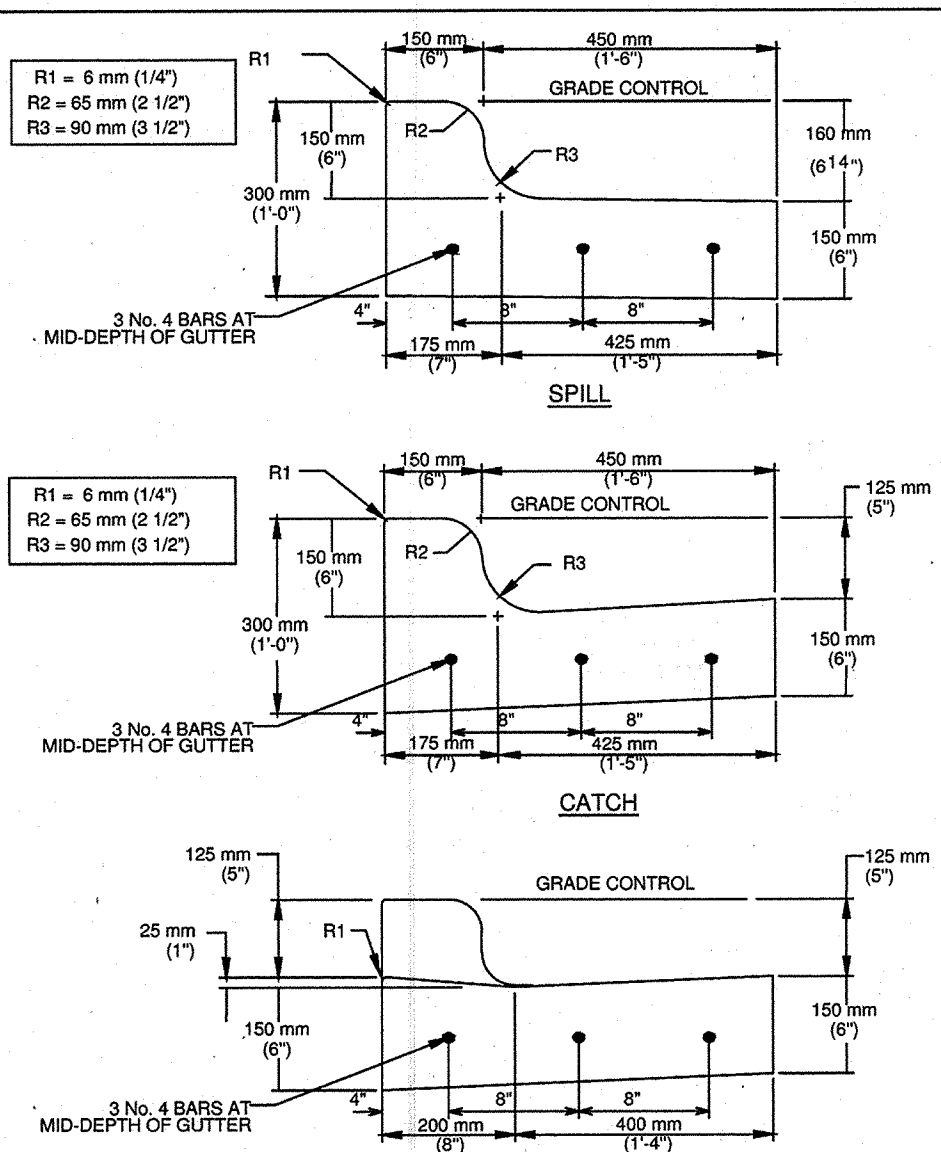


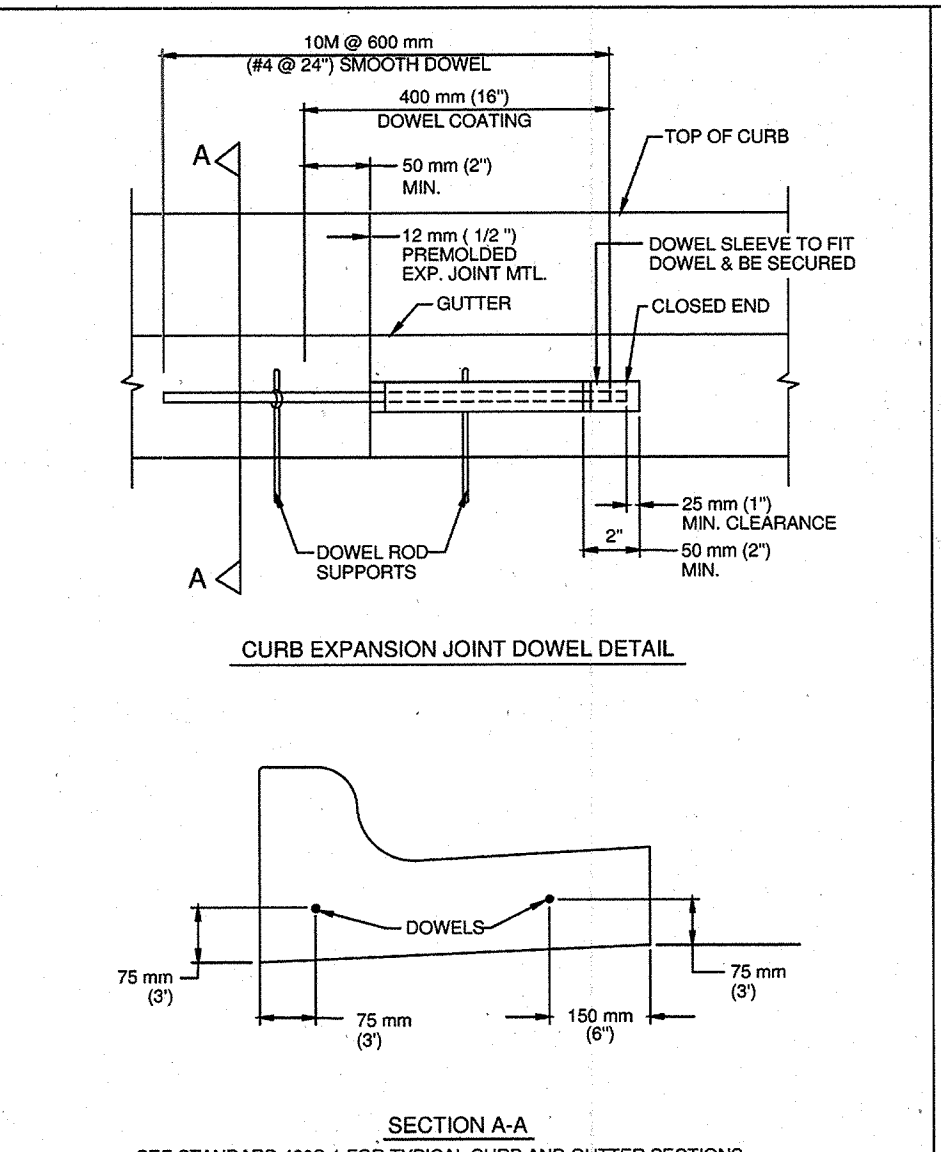
**CITY OF AUSTIN**  
DEPARTMENT OF PUBLIC WORKS AND TRANSPORTATION  
RECORD COPY SIGNED BY LINDA RIVERA  
9/29/09  
ADOPTED

**CURB AND GUTTER SECTION**  
STANDARD NO. 430S-1  
THE ARCHITECT/ENGINEER ASSUMES RESPONSIBILITY FOR APPROPRIATE USE OF THIS STANDARD.



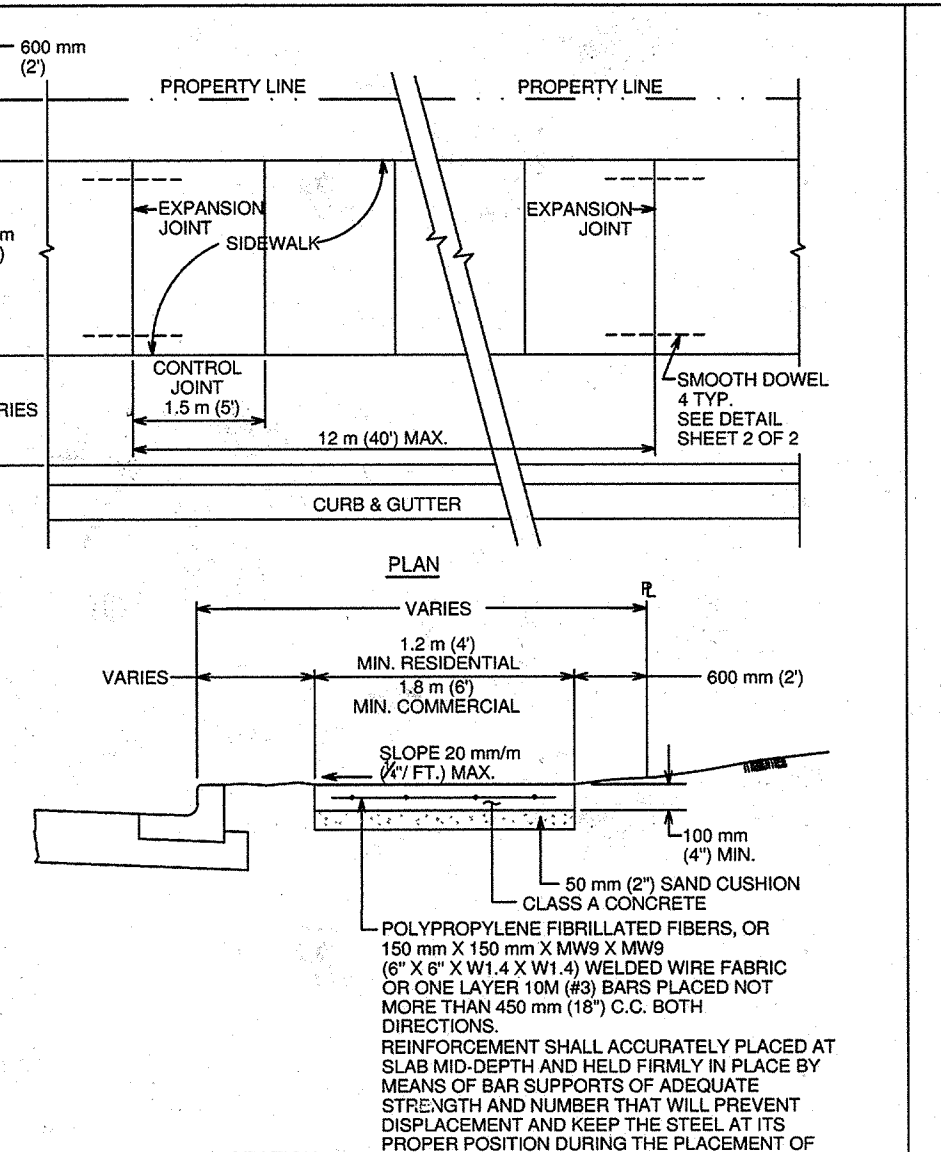
**CITY OF AUSTIN**  
DEPARTMENT OF PUBLIC WORKS AND TRANSPORTATION  
RECORD COPY SIGNED BY LINDA RIVERA  
04/04/10  
ADOPTED

**REINFORCED CURB AND GUTTER SECTION**  
STANDARD NO. 430S-2  
THE ARCHITECT/ENGINEER ASSUMES RESPONSIBILITY FOR APPROPRIATE USE OF THIS STANDARD.



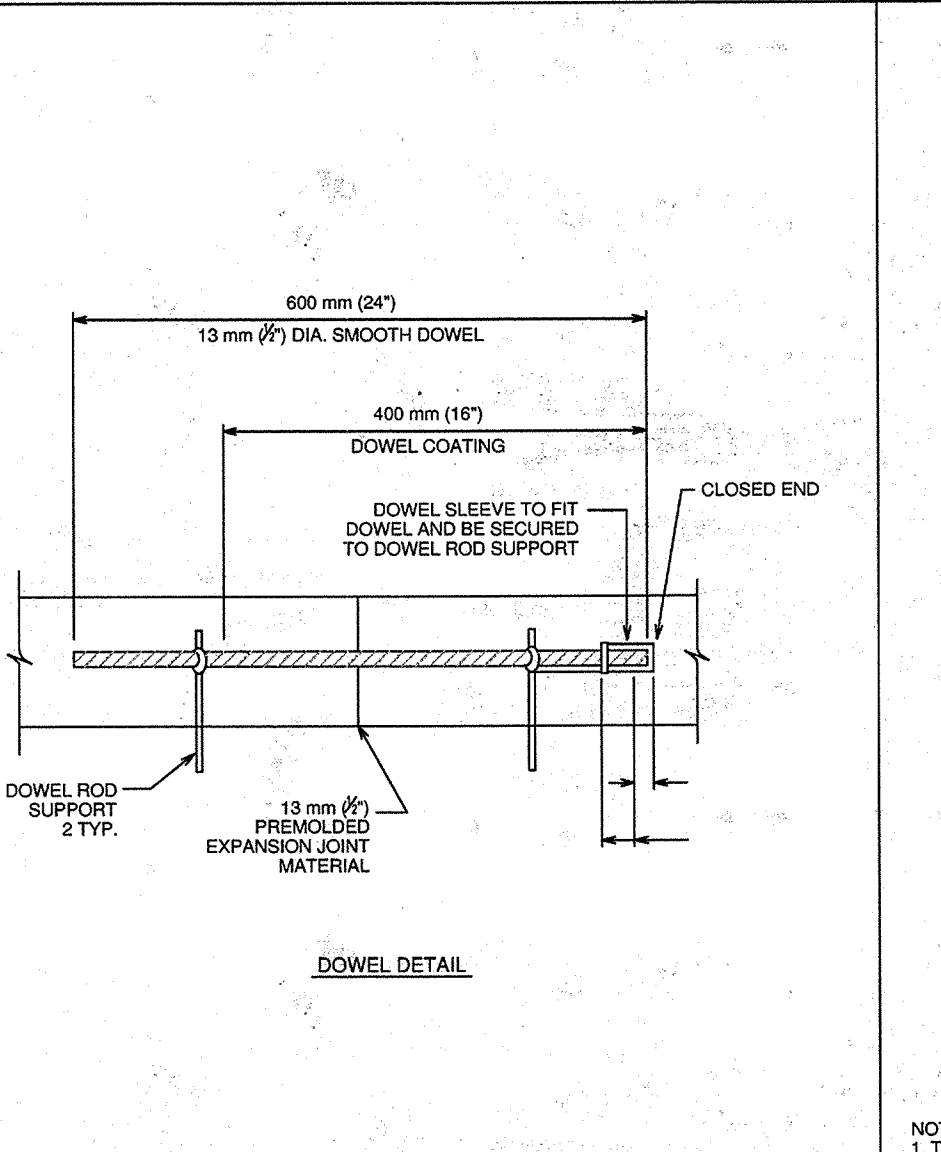
**CITY OF AUSTIN**  
DEPARTMENT OF PUBLIC WORKS AND TRANSPORTATION  
RECORD COPY SIGNED BY LINDA RIVERA  
9/29/09  
ADOPTED

**CURB EXPANSION JOINT DOWEL DETAIL**  
STANDARD NO. 430S-3  
THE ARCHITECT/ENGINEER ASSUMES RESPONSIBILITY FOR APPROPRIATE USE OF THIS STANDARD.



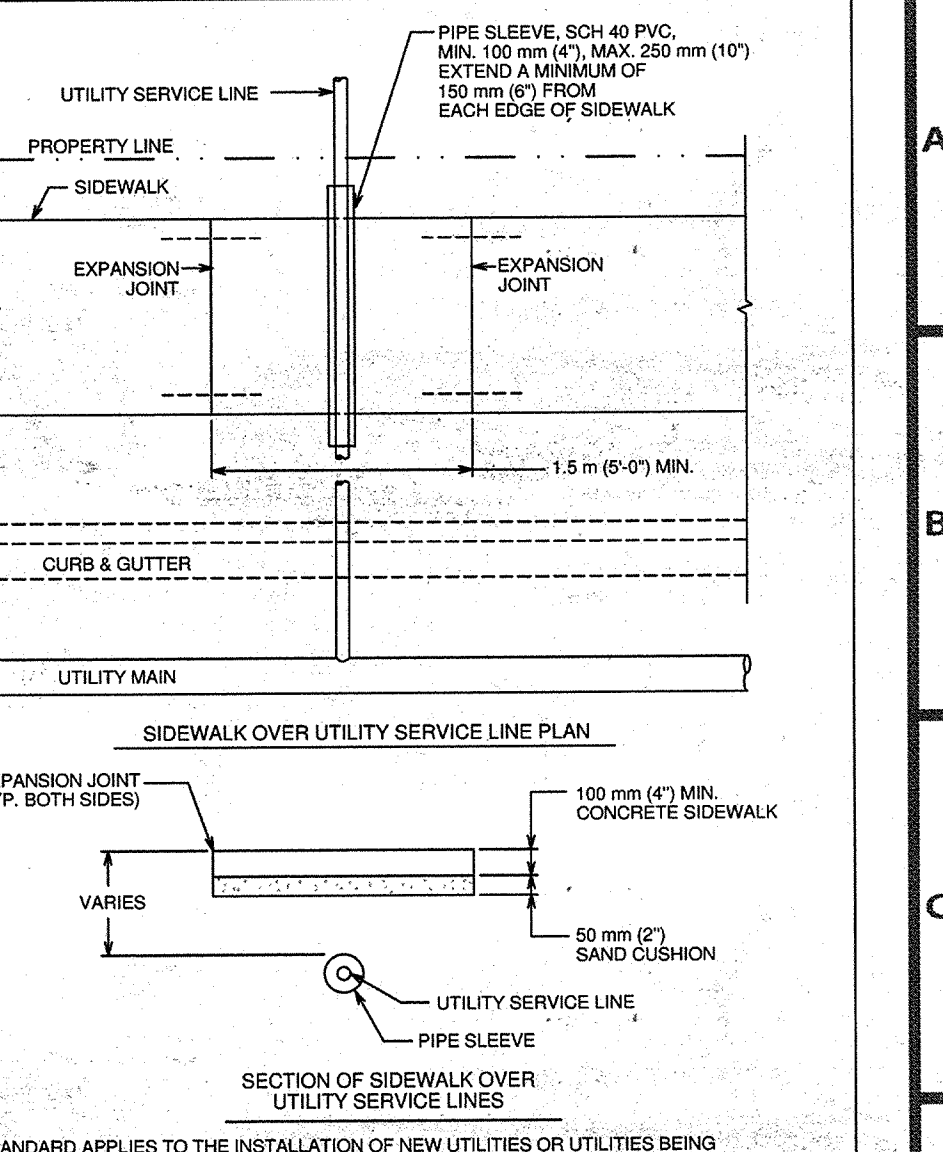
**CITY OF AUSTIN**  
DEPARTMENT OF PUBLIC WORKS  
RECORD COPY SIGNED BY BILL GARDNER  
03/26/08  
ADOPTED

**SIDEWALK**  
STANDARD NO. 432S-1  
THE ARCHITECT/ENGINEER ASSUMES RESPONSIBILITY FOR APPROPRIATE USE OF THIS STANDARD.



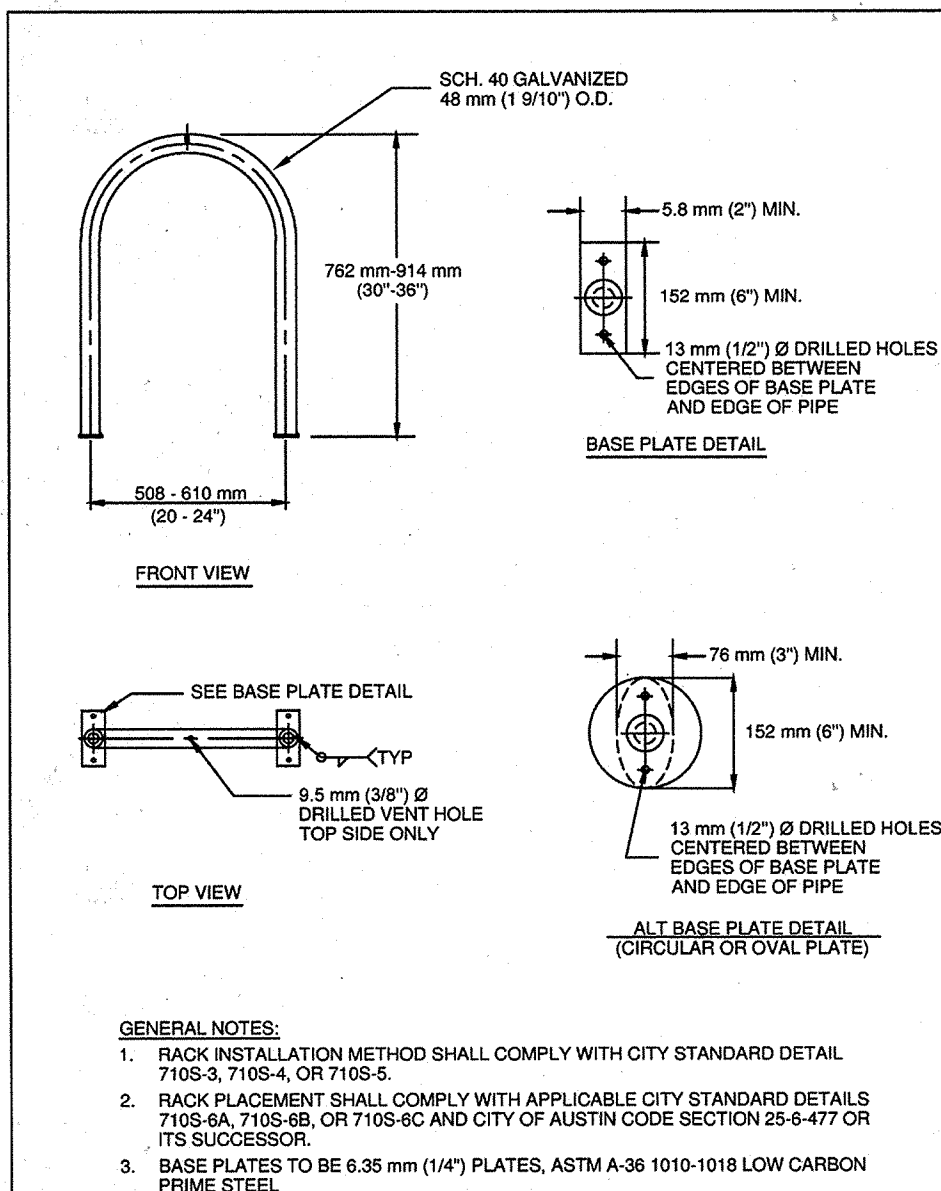
**CITY OF AUSTIN**  
DEPARTMENT OF PUBLIC WORKS  
RECORD COPY SIGNED BY BILL GARDNER  
03/26/08  
ADOPTED

**SIDEWALK**  
STANDARD NO. 432S-1  
THE ARCHITECT/ENGINEER ASSUMES RESPONSIBILITY FOR APPROPRIATE USE OF THIS STANDARD.



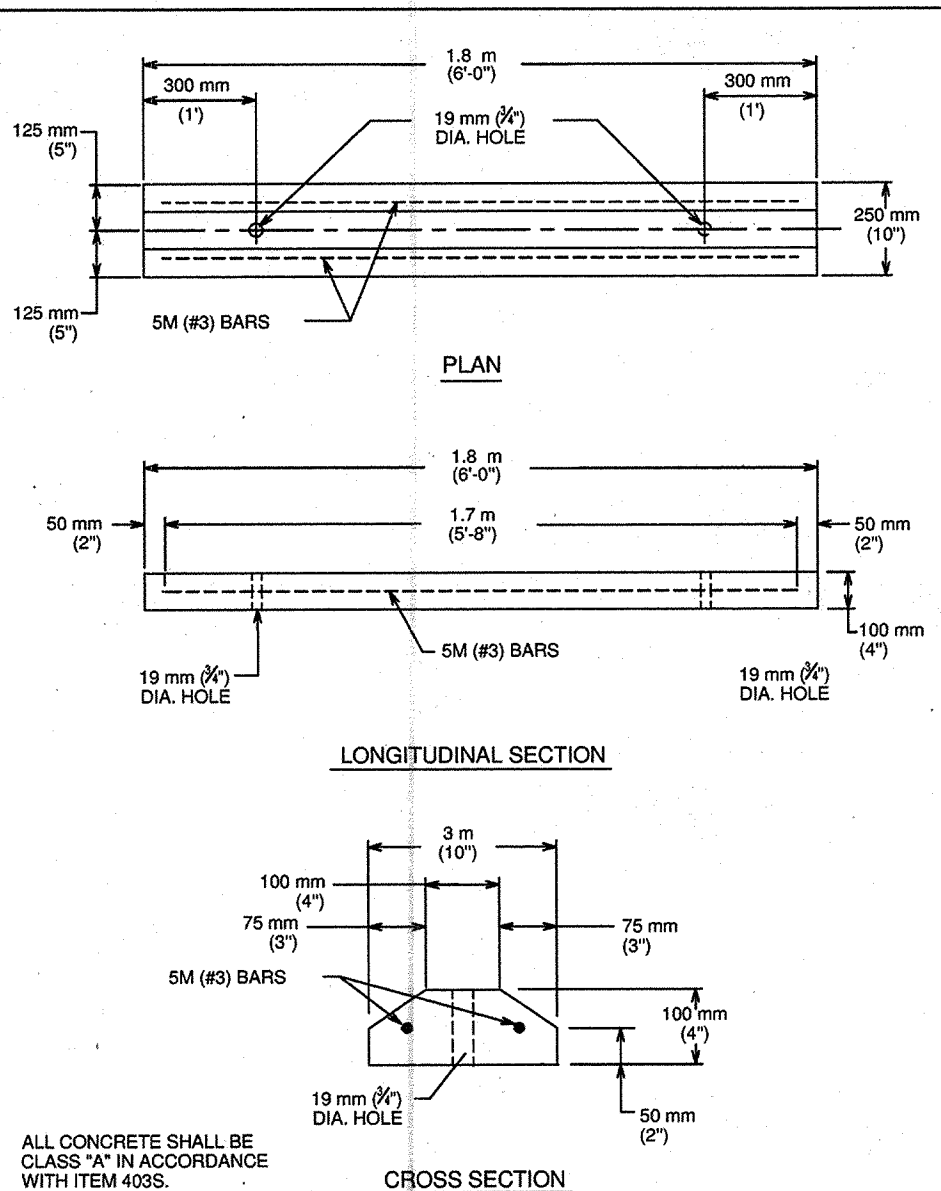
**CITY OF AUSTIN**  
DEPARTMENT OF PUBLIC WORKS  
RECORD COPY SIGNED BY BILL GARDNER  
03/26/08  
ADOPTED

**SIDEWALK**  
STANDARD NO. 432S-1  
THE ARCHITECT/ENGINEER ASSUMES RESPONSIBILITY FOR APPROPRIATE USE OF THIS STANDARD.



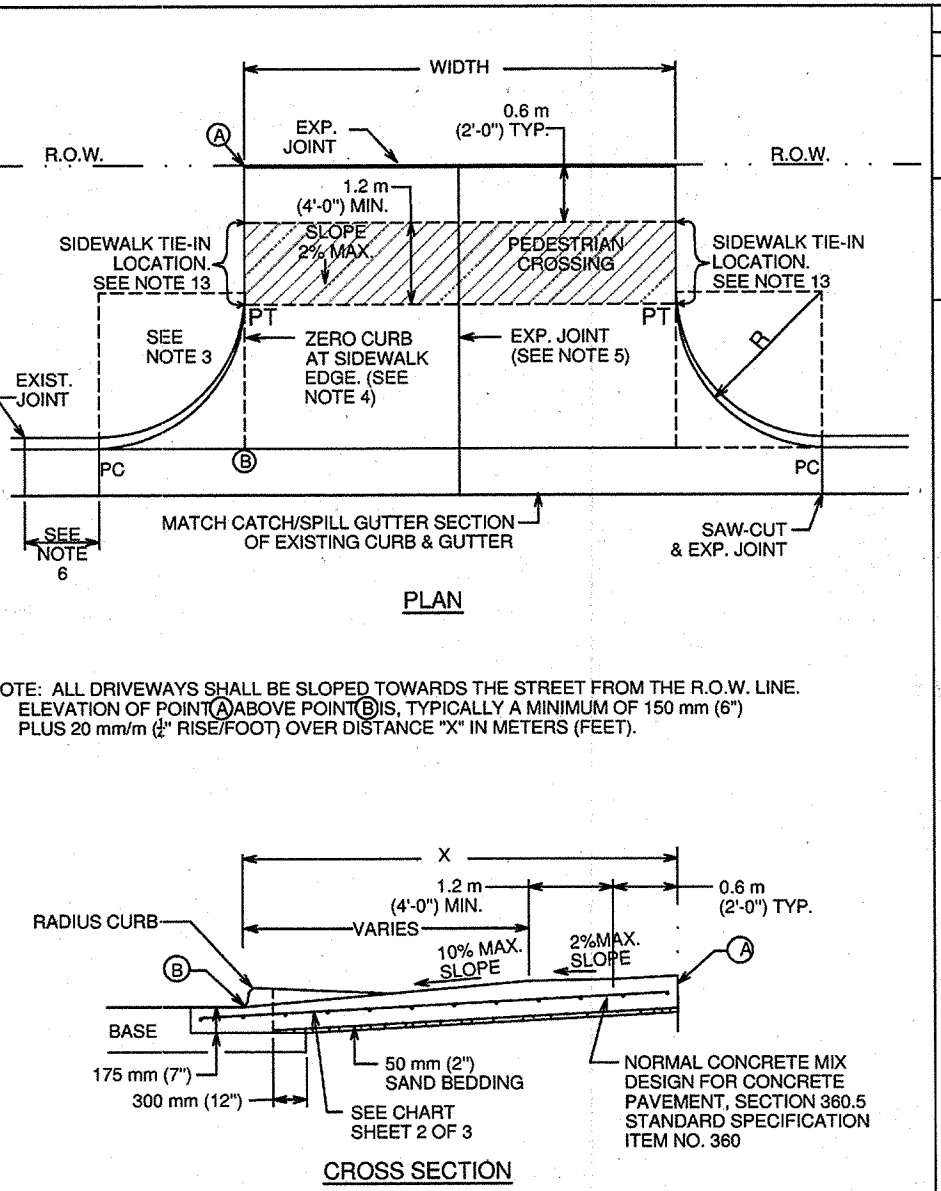
**CITY OF AUSTIN**  
DEPARTMENT OF PUBLIC WORKS  
RECORD COPY SIGNED BY CUCUO TRAN  
09/26/12  
ADOPTED

**CLASS III STYLE BICYCLE PARKING**  
STANDARD NO. 710S-1  
THE ARCHITECT/ENGINEER ASSUMES RESPONSIBILITY FOR APPROPRIATE USE OF THIS STANDARD.



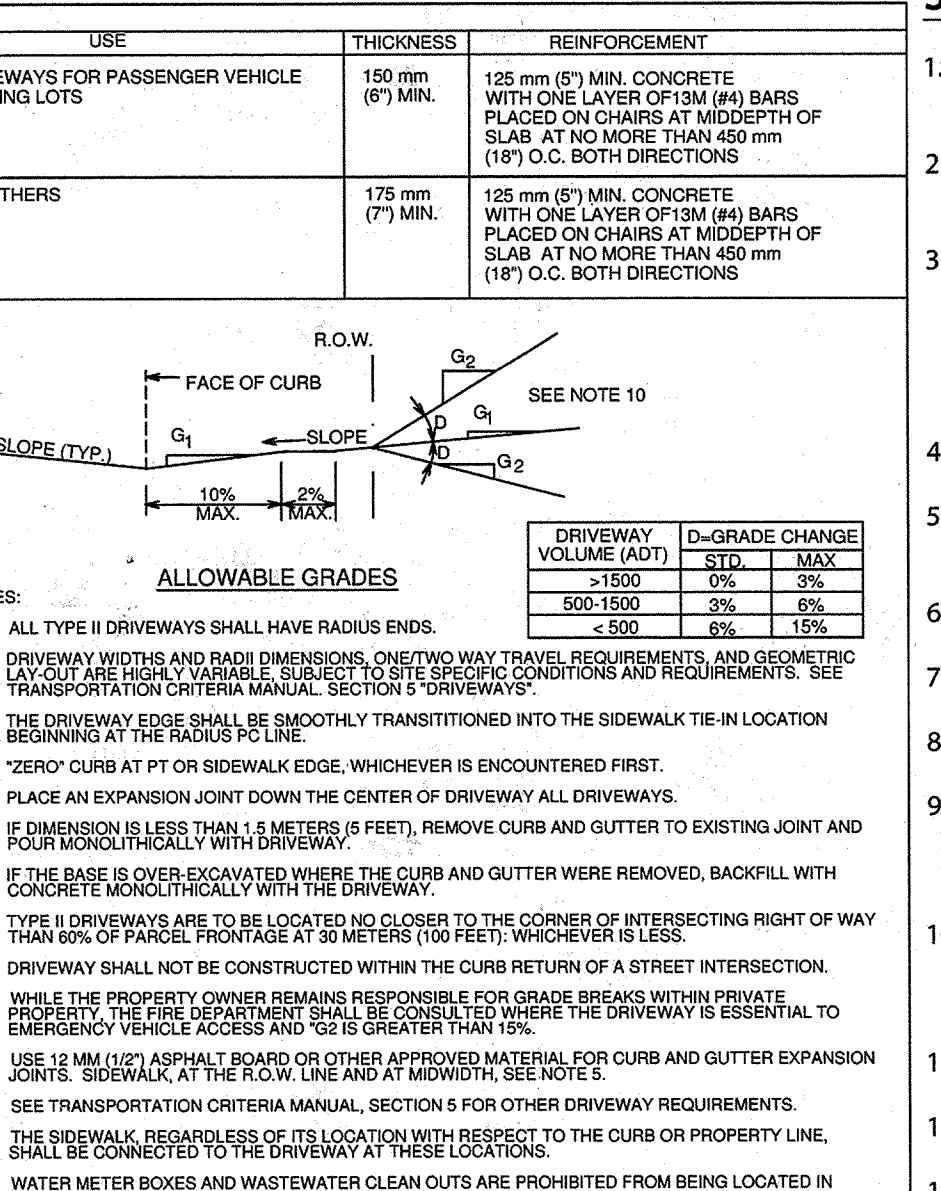
**CITY OF AUSTIN**  
DEPARTMENT OF PUBLIC WORKS  
RECORD COPY SIGNED BY CUCUO TRAN  
09/26/12  
ADOPTED

**PARKING LOT BUMPER CURB**  
STANDARD NO. 439S-1  
THE ARCHITECT/ENGINEER ASSUMES RESPONSIBILITY FOR APPROPRIATE USE OF THIS STANDARD.



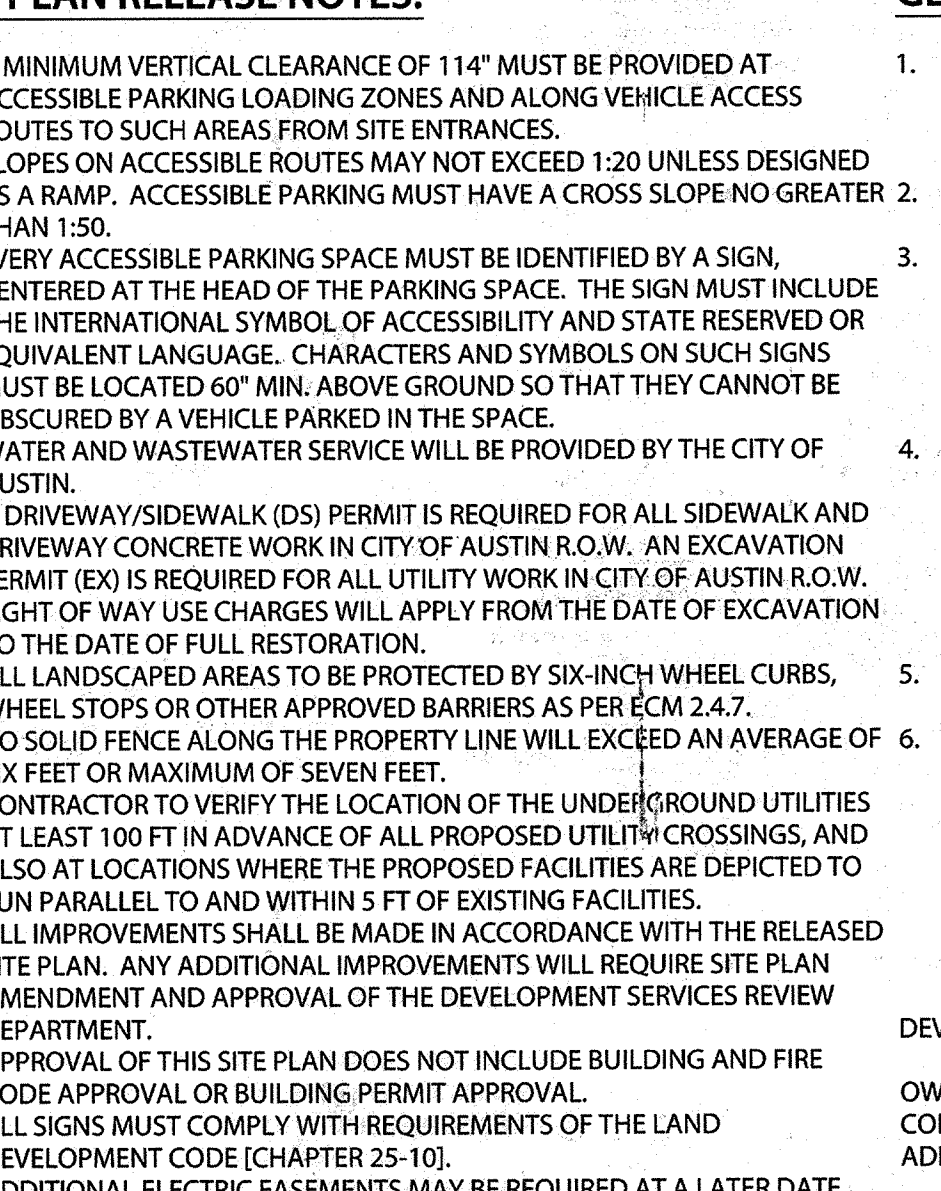
**CITY OF AUSTIN**  
DEPARTMENT OF PUBLIC WORKS  
RECORD COPY SIGNED BY CUCUO TRAN  
02/24/10  
ADOPTED

**TYPE II DRIVEWAY**  
STANDARD NO. 433S-2  
THE ARCHITECT/ENGINEER ASSUMES RESPONSIBILITY FOR APPROPRIATE USE OF THIS STANDARD.



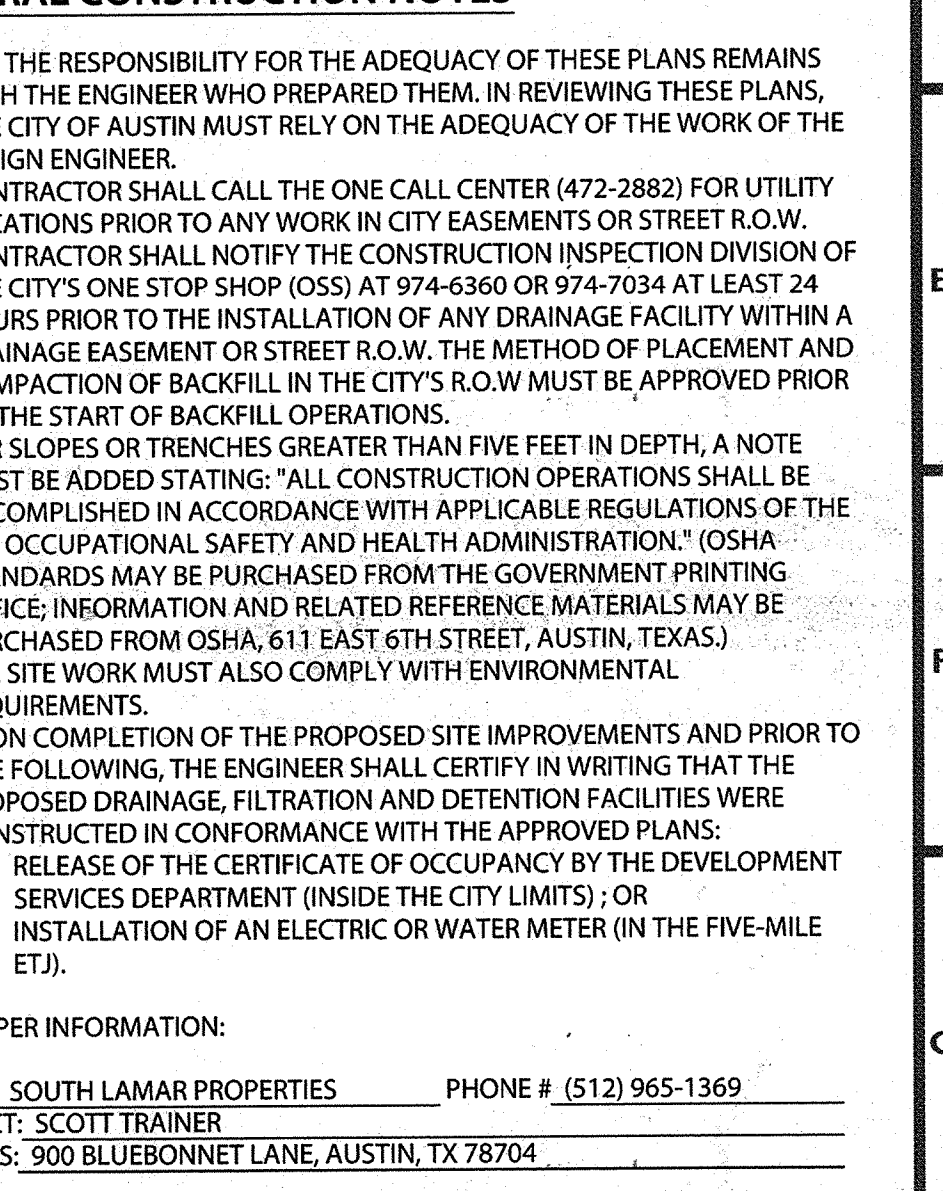
**CITY OF AUSTIN**  
DEPARTMENT OF PUBLIC WORKS  
RECORD COPY SIGNED BY CUCUO TRAN  
02/24/10  
ADOPTED

**TYPE II DRIVEWAY**  
STANDARD NO. 433S-2  
THE ARCHITECT/ENGINEER ASSUMES RESPONSIBILITY FOR APPROPRIATE USE OF THIS STANDARD.



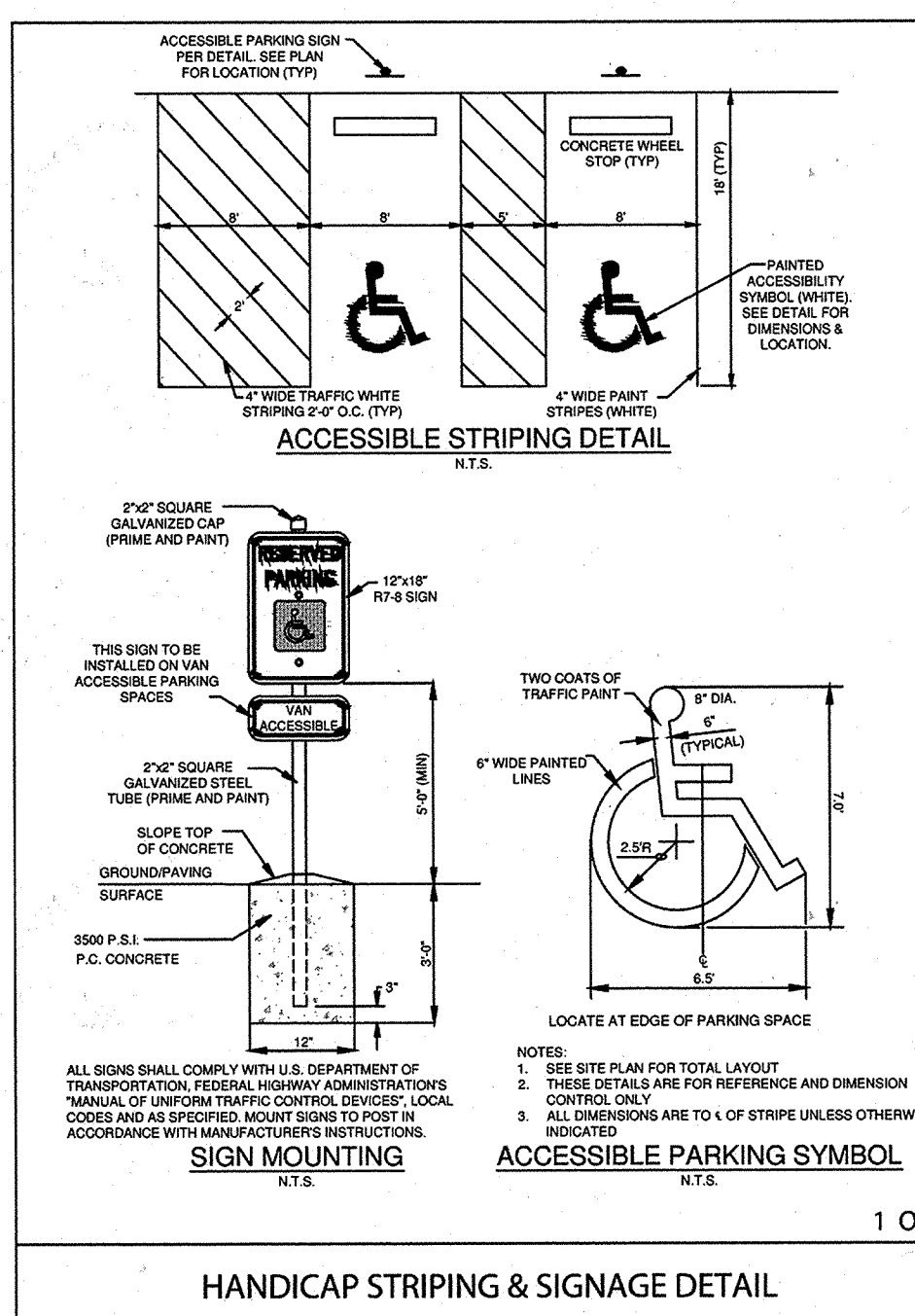
**CITY OF AUSTIN**  
DEPARTMENT OF PUBLIC WORKS  
RECORD COPY SIGNED BY CUCUO TRAN  
02/24/10  
ADOPTED

**TYPE II DRIVEWAY**  
STANDARD NO. 433S-2  
THE ARCHITECT/ENGINEER ASSUMES RESPONSIBILITY FOR APPROPRIATE USE OF THIS STANDARD.



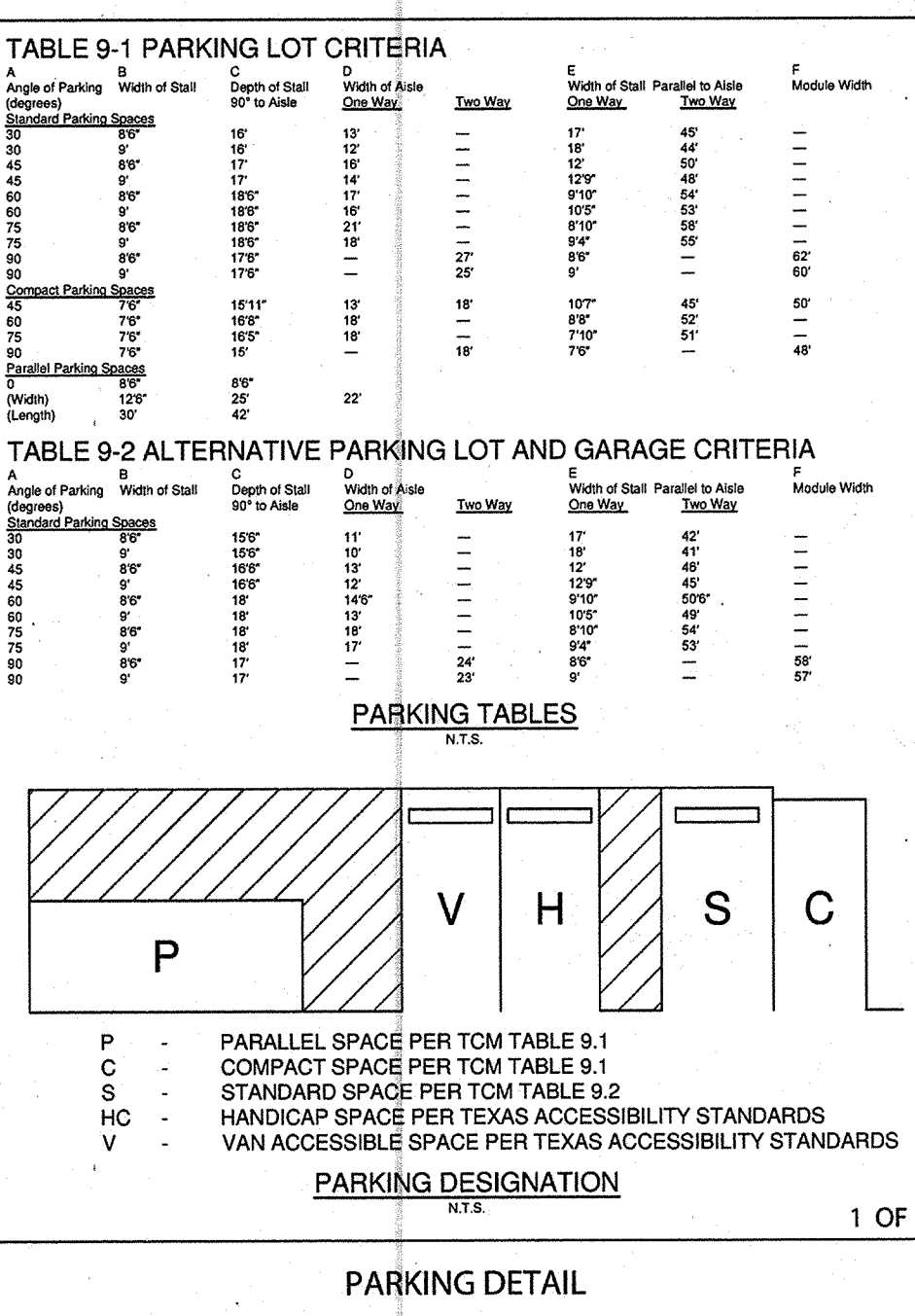
**CITY OF AUSTIN**  
DEPARTMENT OF PUBLIC WORKS  
RECORD COPY SIGNED BY CUCUO TRAN  
02/24/10  
ADOPTED

**TYPE II DRIVEWAY**  
STANDARD NO. 433S-2  
THE ARCHITECT/ENGINEER ASSUMES RESPONSIBILITY FOR APPROPRIATE USE OF THIS STANDARD.



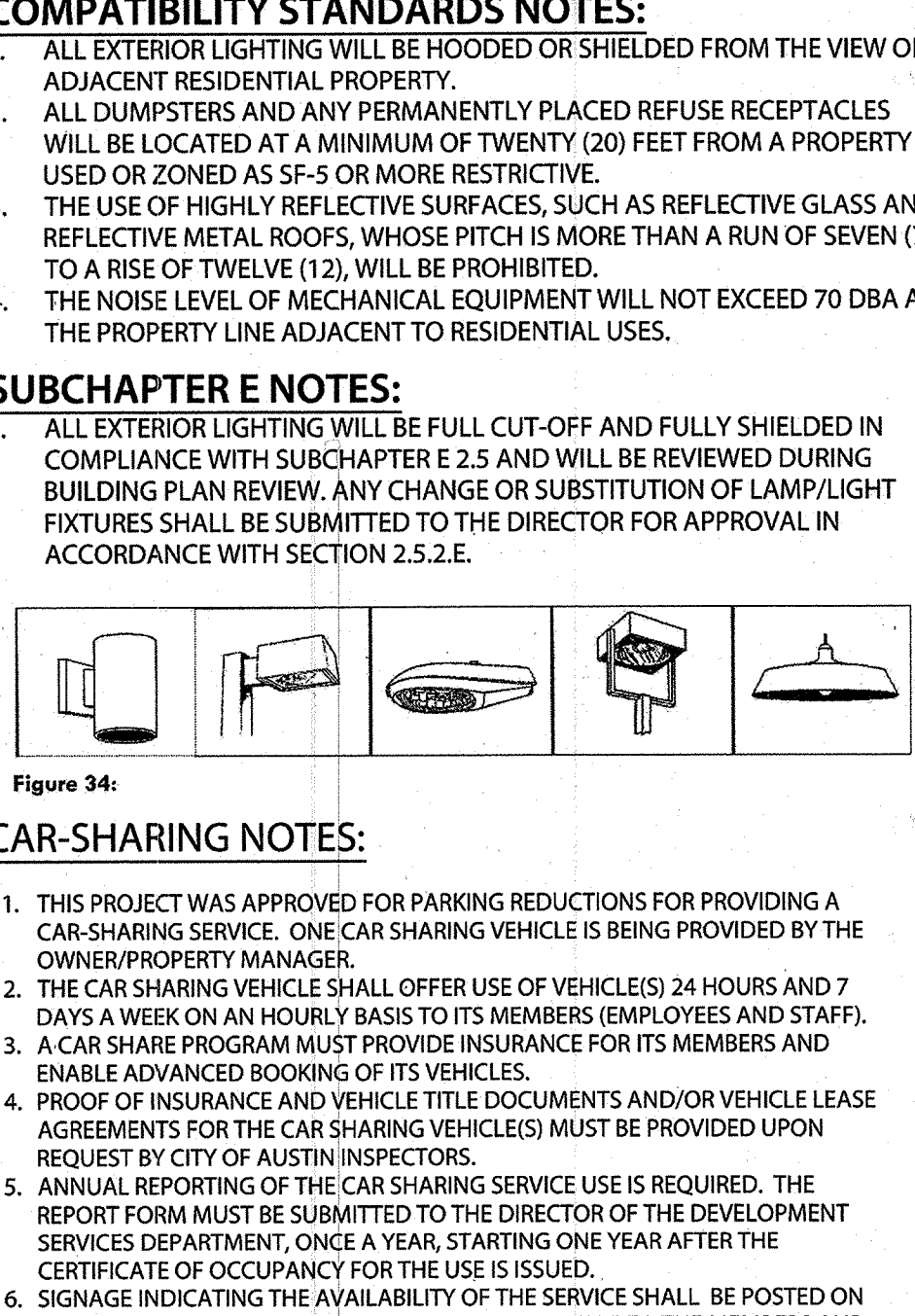
**CITY OF AUSTIN**  
DEPARTMENT OF PUBLIC WORKS  
RECORD COPY SIGNED BY CUCUO TRAN  
09/26/12  
ADOPTED

**CLASS III STYLE BICYCLE PARKING**  
STANDARD NO. 710S-1  
THE ARCHITECT/ENGINEER ASSUMES RESPONSIBILITY FOR APPROPRIATE USE OF THIS STANDARD.



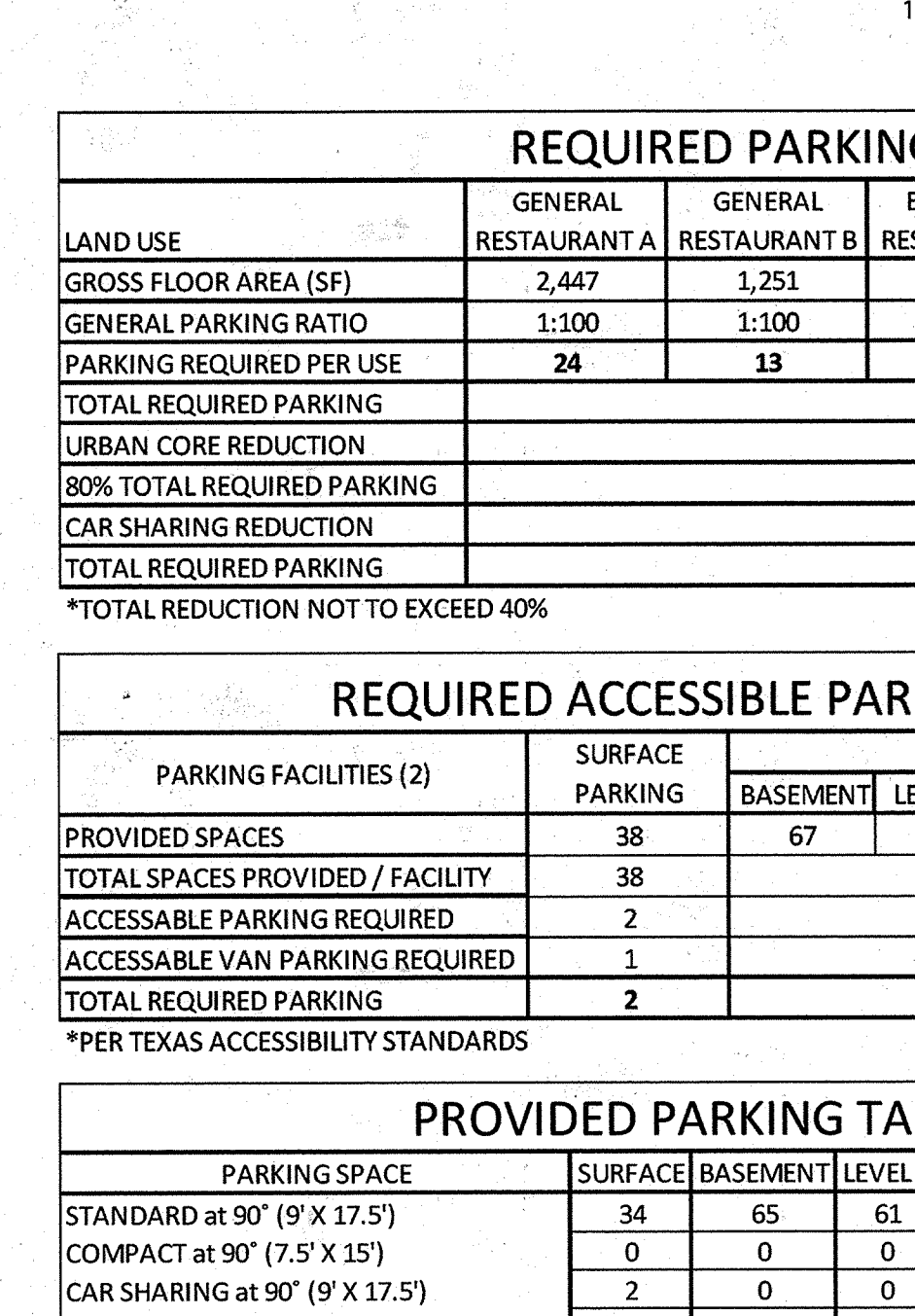
**CITY OF AUSTIN**  
DEPARTMENT OF PUBLIC WORKS  
RECORD COPY SIGNED BY CUCUO TRAN  
09/26/12  
ADOPTED

**CLASS III STYLE BICYCLE PARKING**  
STANDARD NO. 710S-1  
THE ARCHITECT/ENGINEER ASSUMES RESPONSIBILITY FOR APPROPRIATE USE OF THIS STANDARD.



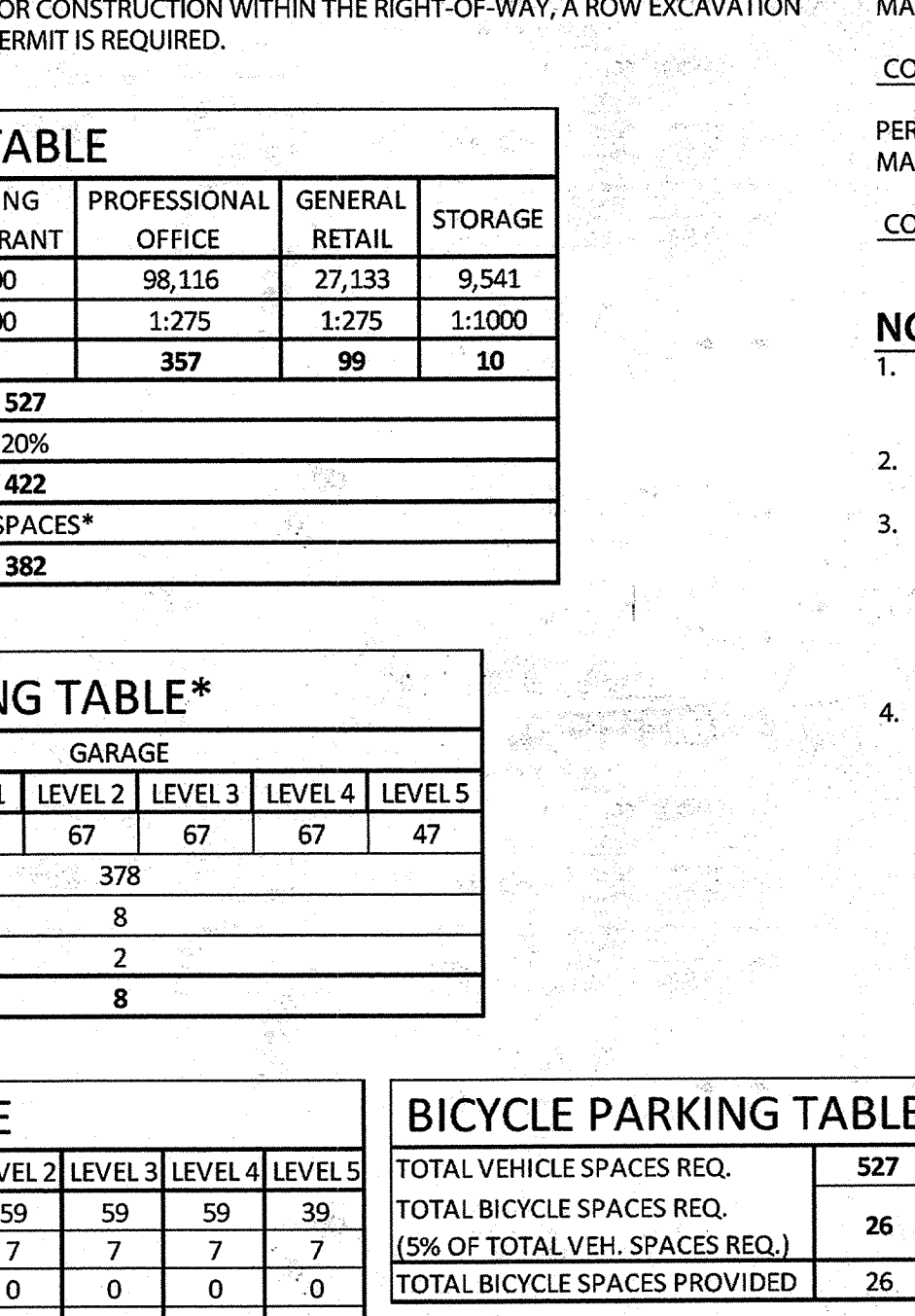
**CITY OF AUSTIN**  
DEPARTMENT OF PUBLIC WORKS  
RECORD COPY SIGNED BY CUCUO TRAN  
09/26/12  
ADOPTED

**CLASS III STYLE BICYCLE PARKING**  
STANDARD NO. 710S-1  
THE ARCHITECT/ENGINEER ASSUMES RESPONSIBILITY FOR APPROPRIATE USE OF THIS STANDARD.



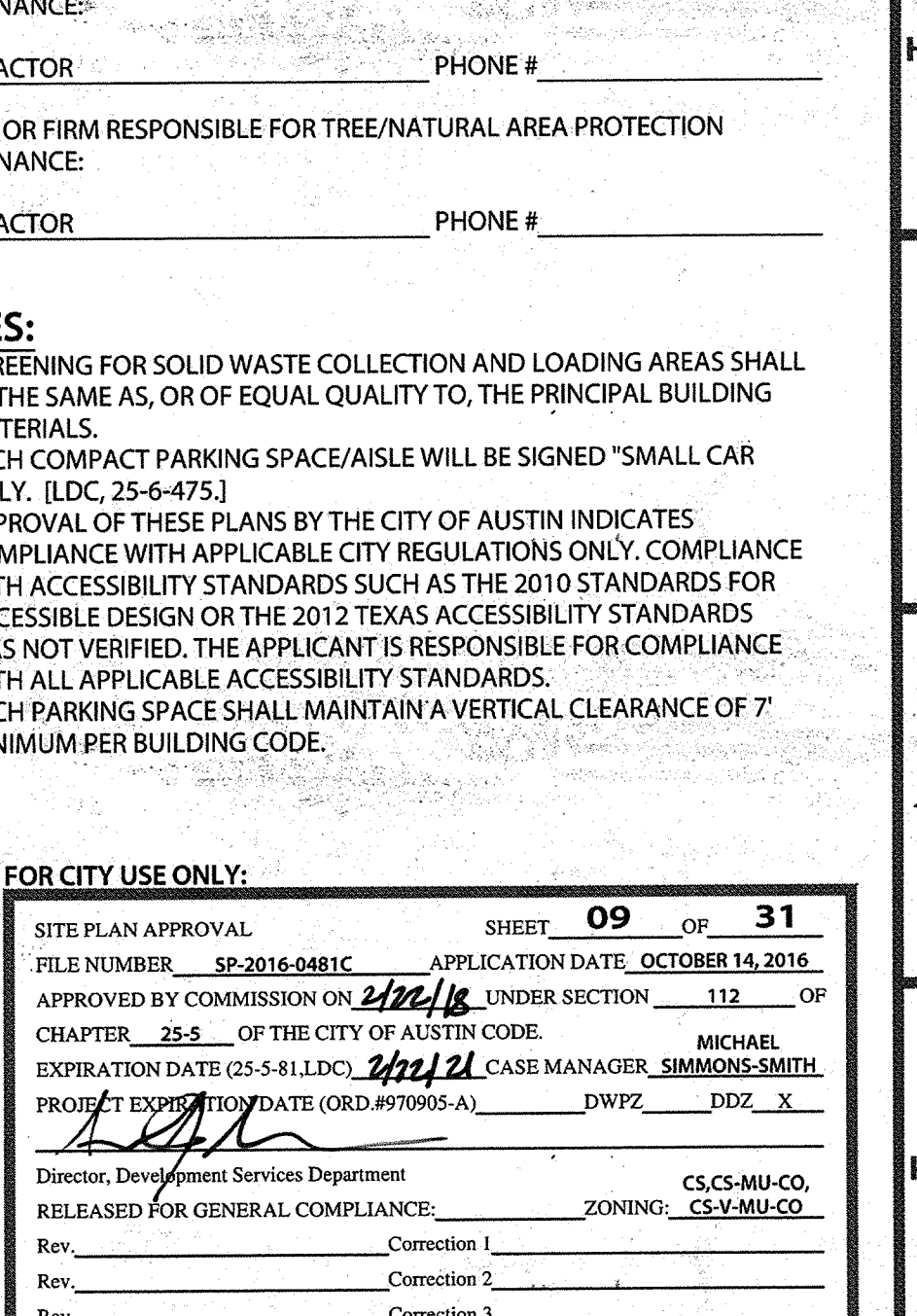
**CITY OF AUSTIN**  
DEPARTMENT OF PUBLIC WORKS  
RECORD COPY SIGNED BY CUCUO TRAN  
09/26/12  
ADOPTED

**CLASS III STYLE BICYCLE PARKING**  
STANDARD NO. 710S-1  
THE ARCHITECT/ENGINEER ASSUMES RESPONSIBILITY FOR APPROPRIATE USE OF THIS STANDARD.



**CITY OF AUSTIN**  
DEPARTMENT OF PUBLIC WORKS  
RECORD COPY SIGNED BY CUCUO TRAN  
09/26/12  
ADOPTED

**CLASS III STYLE BICYCLE PARKING**  
STANDARD NO. 710S-1  
THE ARCHITECT/ENGINEER ASSUMES RESPONSIBILITY FOR APPROPRIATE USE OF THIS STANDARD.



**CITY OF AUSTIN**  
DEPARTMENT OF PUBLIC WORKS  
RECORD COPY SIGNED BY CUCUO TRAN  
09/26/12  
ADOPTED

**CLASS III STYLE BICYCLE PARKING**  
STANDARD NO. 710S-1  
THE ARCHITECT/ENGINEER ASSUMES RESPONSIBILITY FOR APPROPRIATE USE OF THIS STANDARD.

DATE

REVISION/DESCRIPTION

REV

CLIENT INFORMATION

D

E

F

G

H

I

J

K

L

**kbge**

ENGINEERING CONSULTING

**KIMBELL | BRUEHL | GARCIA | ESTES**

105 West Riverside Drive, Ste 110, Austin, Texas 78704

T (512) 439-0400 www.kbge-eng.com

TBPE No. F-12902

PLOTTED ON: 12/13/17 12:16:32 PM

PLOTTED BY: AMBAR ALEXANDROS

**SOUTH LAMAR PROPERTIES**

900 BLUEBONNET LANE

AUSTIN, TX 78704

CONTACT: SCOTT TRAINER

PHONE: (512) 965-1369

**BOULDIN CREEK COMMONS**

2043 S LAMAR BLVD

CITY OF AUSTIN, TRAVIS COUNTY, TEXAS

**SITE PLAN NOTES AND DETAILS**

December 13, 2017

**SP-2016-0481C**

1 2 3 4 5 6 7 8 9 10 11 12 13 14 15