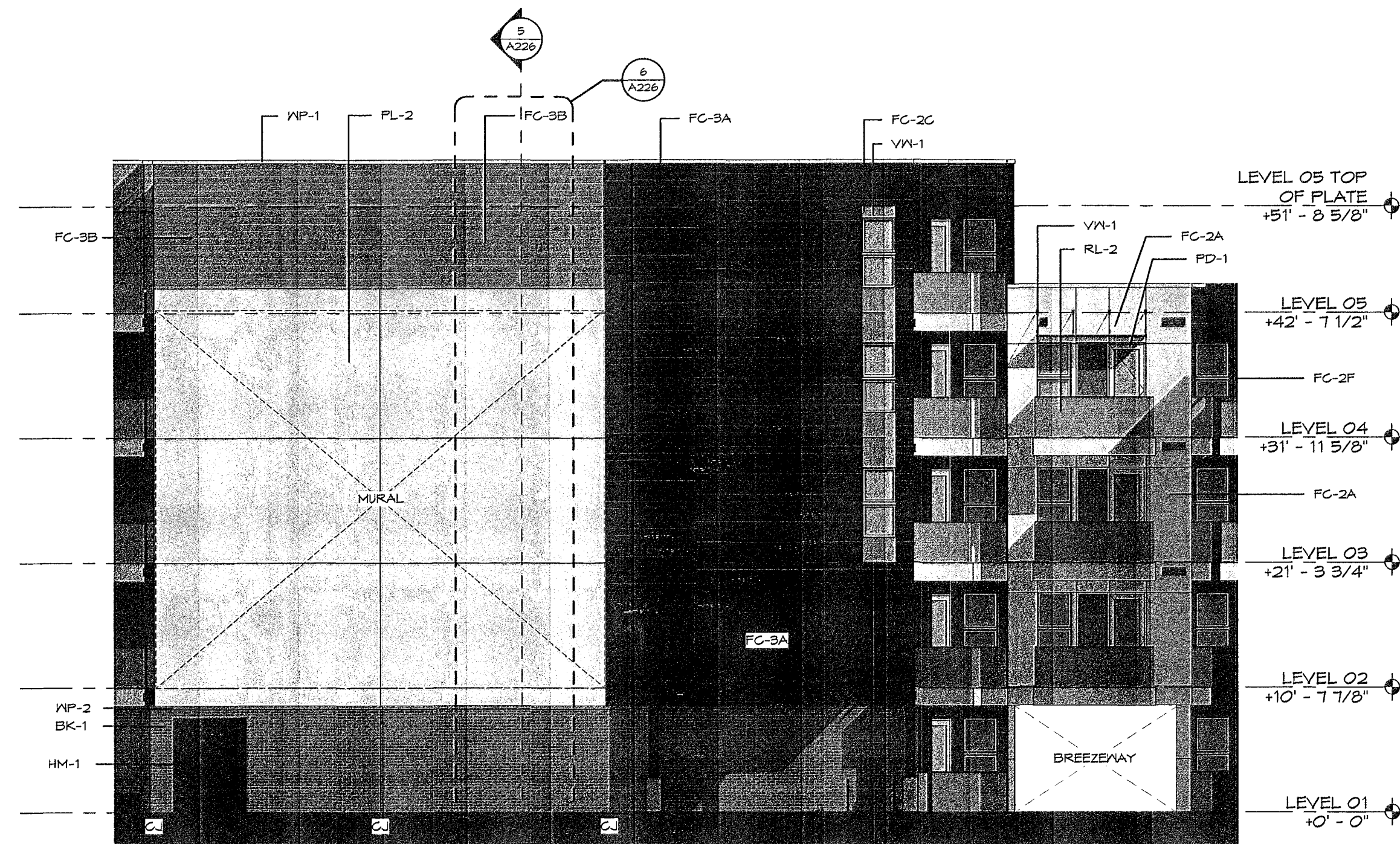
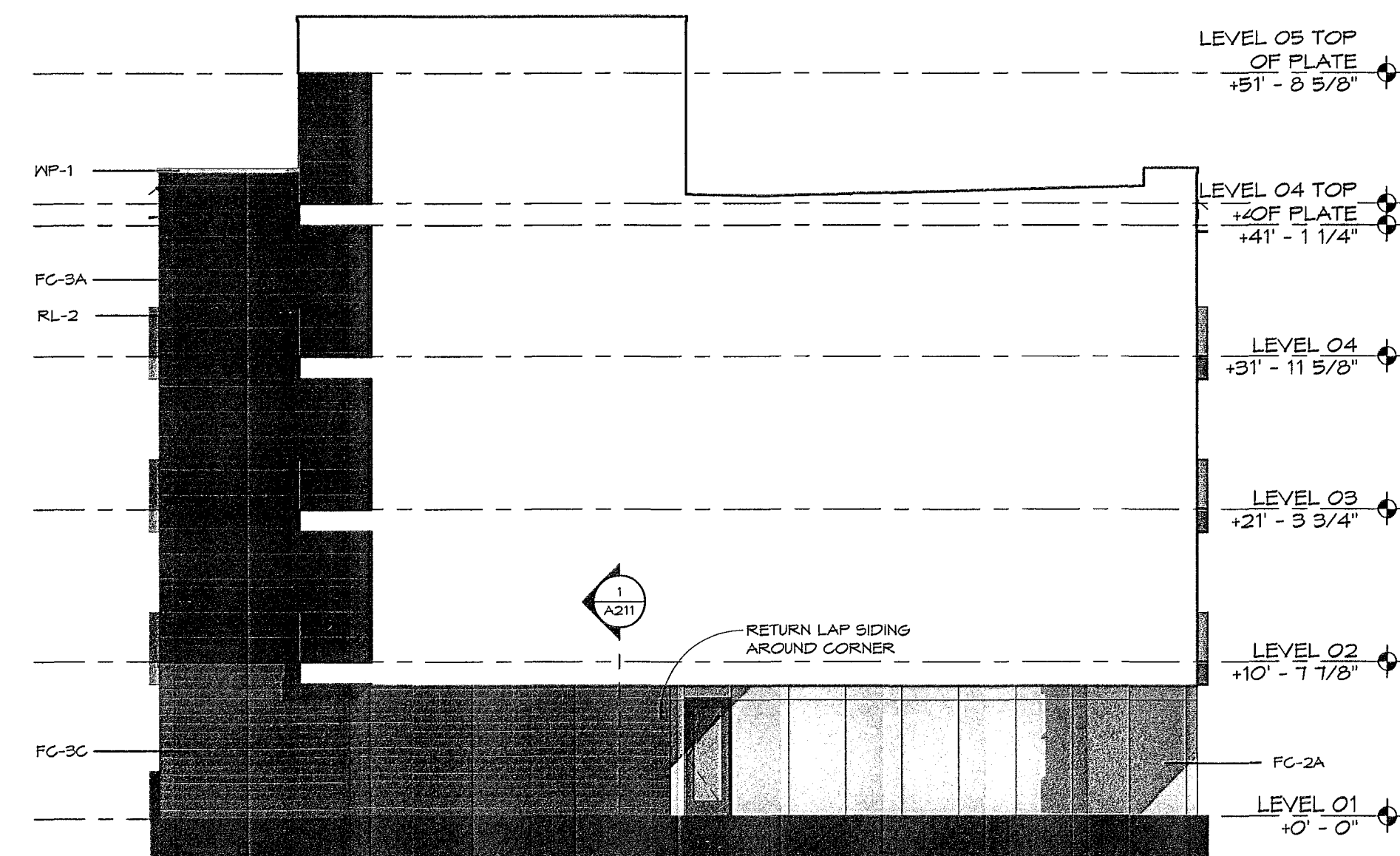


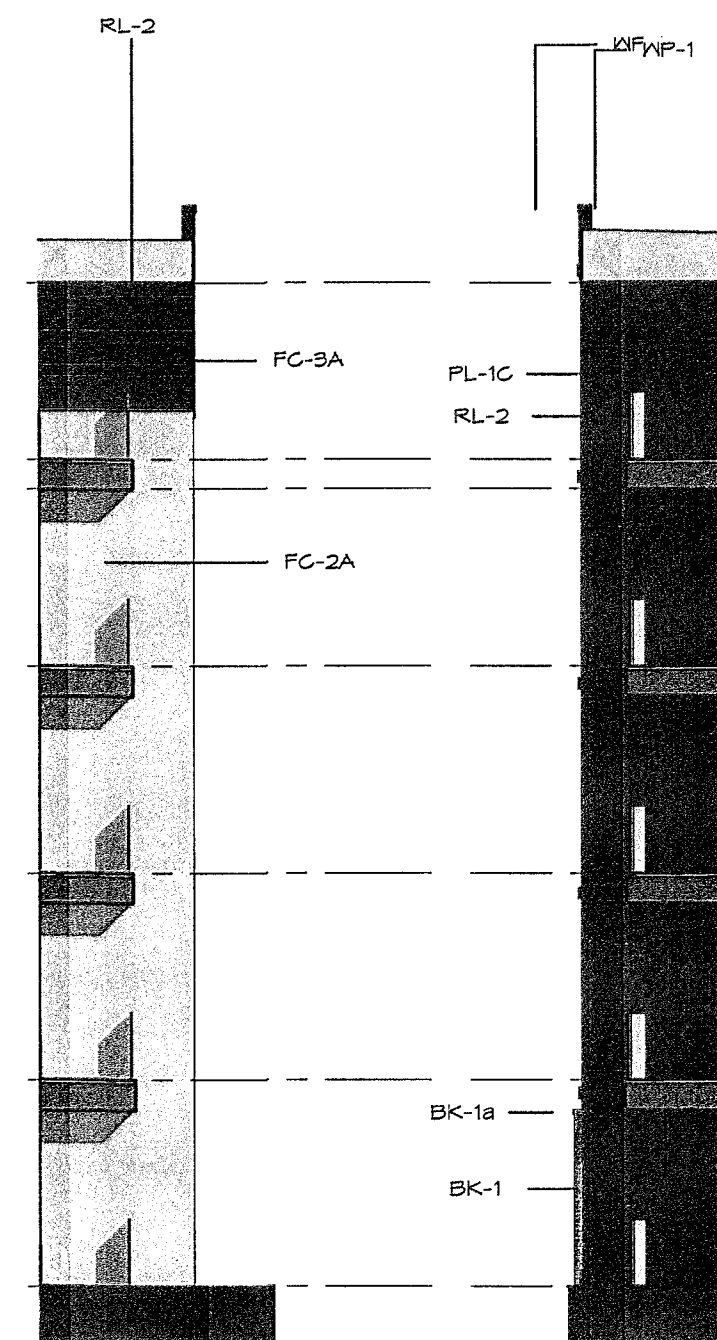
5 BUILDING 5 - ELEV 14
SCALE: 1/8" = 1'-0"



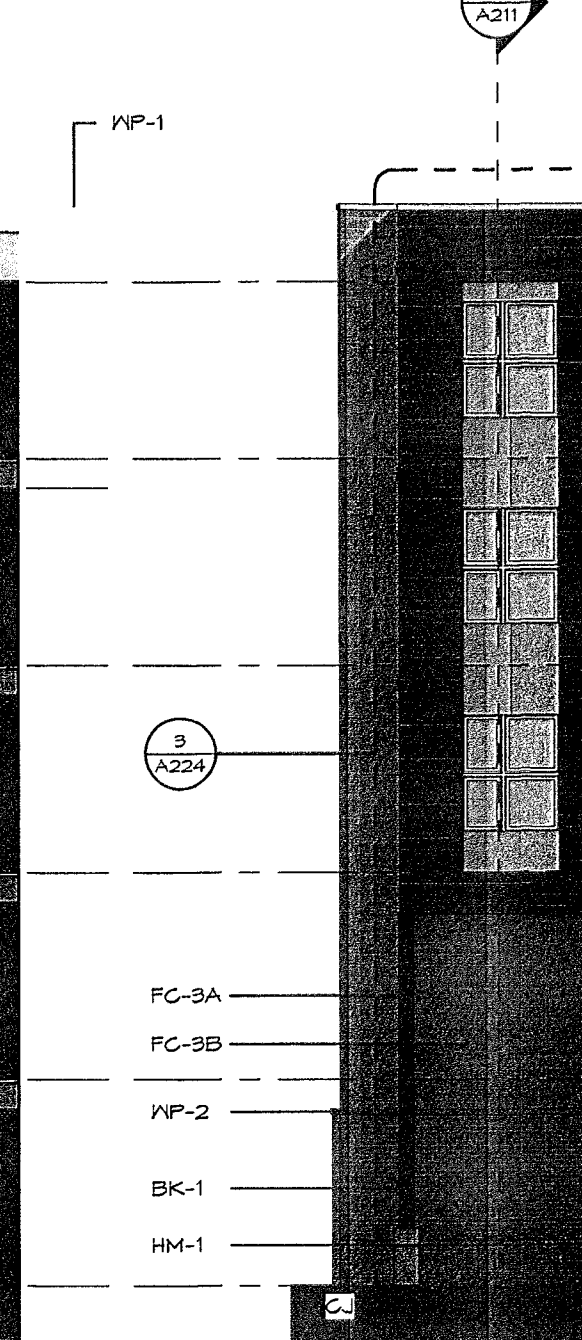
1 BUILDING 6 - ELEV 20
SCALE: 1/8" = 1'-0"



14 BUILDING 5 - ELEV 24 - BREEZEWAY
SCALE: 1/8" = 1'-0"



11 BUILDING 6 - ELEV 21
SCALE: 1/8" = 1'-0"



12 BUILDING 6 - ELEV 22
SCALE: 1/8" = 1'-0"



2 BUILDING 6 - ELEV 23
SCALE: 1/8" = 1'-0"

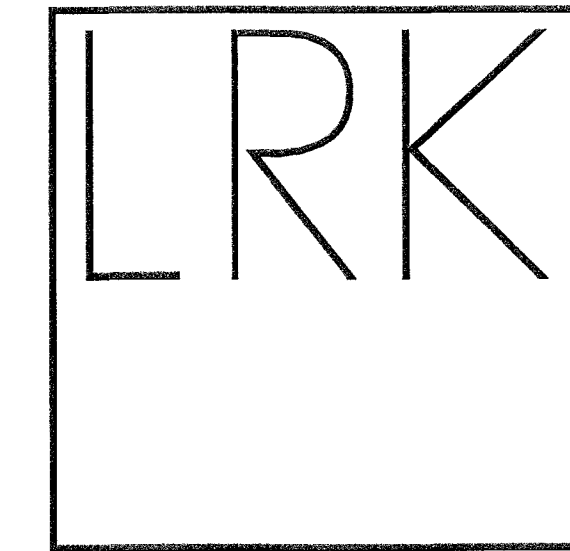
ELEVATION LEGEND	
Key Value	Keynote Text
BK-1	KING SIZE FACE BRICK T.B.D.
BK-1a	KING SIZE FACE BRICK - ROWLOCK T.B.D.
BK-2	KING SIZE FACE BRICK T.B.D.
BK-2a	KING SIZE FACE BRICK - ROWLOCK T.B.D.
CA-1	METAL CANOPY (LEVEL 04 AND 05, PATIO DOORS)
FC-1	FIBER CEMENT BOARD (DIFFERENT COLORS)
FC-2A	FIBER CEMENT SMOOTH VERTICAL PANEL SIDING - TO BE PRIMED AND PAINTED COLOR A
FC-2B	FIBER CEMENT BOARD - TO BE PRIMED AND PAINTED COLOR B
FC-2C	FIBER CEMENT BOARD - TO BE PRIMED AND PAINTED COLOR C
FC-2D	FIBER CEMENT BOARD - TO BE PRIMED AND PAINTED COLOR D
FC-2E	FIBER CEMENT BOARD - TO BE PRIMED AND PAINTED COLOR E
FC-2F	FIBER CEMENT BOARD - TO BE PRIMED AND PAINTED COLOR F

ELEVATION LEGEND	
Key Value	Keynote Text
FC-3A	FIBER CEMENT LAP SIDING - TO BE PRIMED AND PAINTED COLOR A
FC-3B	FIBER CEMENT LAP SIDING - TO BE PRIMED AND PAINTED COLOR B
FC-3C	FIBER CEMENT LAP SIDING - TO BE PRIMED AND PAINTED COLOR C
FC-4	TRIMMING, EDGING-SMOOTH, PAINTED COLOR TO MATCH WALL
GL-1	2" X 4 1/2" ALUMINUM GLAZING STOREFRONT SYSTEM IV 1" INSULATED GLASS
HM-1	HOLLOW METAL DOOR AND FRAME - TO BE PRIMED AND PAINTED
MT-1	ALUMINUM COMPOSITE METAL PANEL
MT-2	BREAK METAL (CANOPY EDGE, LEVEL 05 BALCONY)
MT-3	STEEL FABRICATION RETAIL CANOPY - TO BE PRIMED AND PAINTED
OD-1	ALUMINUM SECTIONAL OVERHEAD DOOR
OD-2	ALUMINUM SECTIONAL OVERHEAD DOOR IVI" INSULATED GLASS

ELEVATION LEGEND	
Key Value	Keynote Text
PD-1	OUT-SWING PATIO DOOR SYSTEM IV SIGHTLINE 1" INSULATED GLASS
PD-2	ALUMINUM FRAME DOOR WITH INSULATED GLASS
PL-1A	CEMENT PLASTER STUCCO SYSTEM IV DRAINAGE MAT PAINTED COLOR A
PL-1B	CEMENT PLASTER STUCCO SYSTEM IV DRAINAGE MAT PAINTED COLOR B
PL-1C	CEMENT PLASTER STUCCO SYSTEM IV DRAINAGE MAT PAINTED COLOR C
PL-1D	CEMENT PLASTER STUCCO SYSTEM IV DRAINAGE MAT PAINTED COLOR D
PL-2	CUSTOM PAINTED ARTWORK ON PL-1D
RL-1	GLASS RAILING SYSTEM TEMPERED/LAMINATED GLASS POCKETED CONNECTION
RL-2	BALCONY RAILING MESH PANEL - TO BE PRIMED AND PAINTED
VY-1	VINYL WINDOW SYSTEM WITH 1" INSULATED GLASS
VY-2	FLASHING AND SHEET METAL (PARAPET COPING)

COMPLIANCE WITH BUILDING DESIGN STANDARDS, ARTICLE 3 OR SUBCHAPTER 3, IS REQUIRED, AND IS TO BE REVIEWED FOR COMPLIANCE DURING BUILDING CODE REVIEW.

SITE PLAN APPROVAL Sheet 08 of 82
FILE NUMBER SP-2018-0286C APPLICATION DATE JULY 2, 2018
APPROVED BY COMMISSIONER ON N/A UNDER SECTION 10A OF CHAPTER 163 OF THE CITY OF AUSTIN CODE
EXPIRATION DATE (25-5-81, LDC) 12/4/19 CASE MANAGER ROSEMARY AVILA
Director, Development Services Department
RELEASED FOR GENERAL COMPLIANCE 12/4/19 ZONING CS-V
Rev. 1 Correction 1
Rev. 2 Correction 2
Rev. 3 Correction 3
Final plot must be recorded by the Project Expiration Date, if applicable. Subsequent Site Plans which do not comply with the Code current at the time of filing, and all required Building Permits and/or a notice of construction (if a building permit is not required), must also be approved prior to the Project Expiration Date.



Architecture Planning Interiors Research
150 Turtle Creek Blvd, Suite 104D
Dallas, Texas 75207
Telephone 214 389 3816
Fax 225 928 4906
E-mail info@lrk.com

Client:
Fairfield Residential

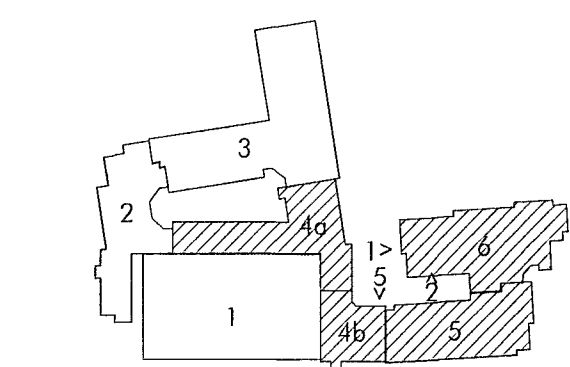
7301 North State Highway 161, Suite 260
Irving, Texas 75039

Issues and Revisions

Date	Issued / Revised
05.04.18	Schematic Design Set
06.28.18	Completeness Check Set
08.17.18	Design Development Set
11.30.18	85% CD Set
04.19.19	95% CD Set
05.01.19	Site Plan Resubmission
07.30.19	Site Plan Resubmission 3

©2018 LRK Inc.
Drawings, written material, and design concepts shall not be used or reproduced in whole or part in any form or format without prior written consent of LRK Inc. Do not scale drawings. Use given dimensions only. If not shown, verify correct dimensions with the Architect. Contractor shall check and verify all dimensions and conditions at job site.

Seal



LRK Project Number: 06.18007.00

Project Name:

1515 South Lamar

1515 South Lamar Blvd.
Austin, Texas 78704

Drawing Name:

EXTERIOR ELEVATIONS

68 OF 87

Drawn By: AB

Checked By: KO

A203
SP-2018-0286C