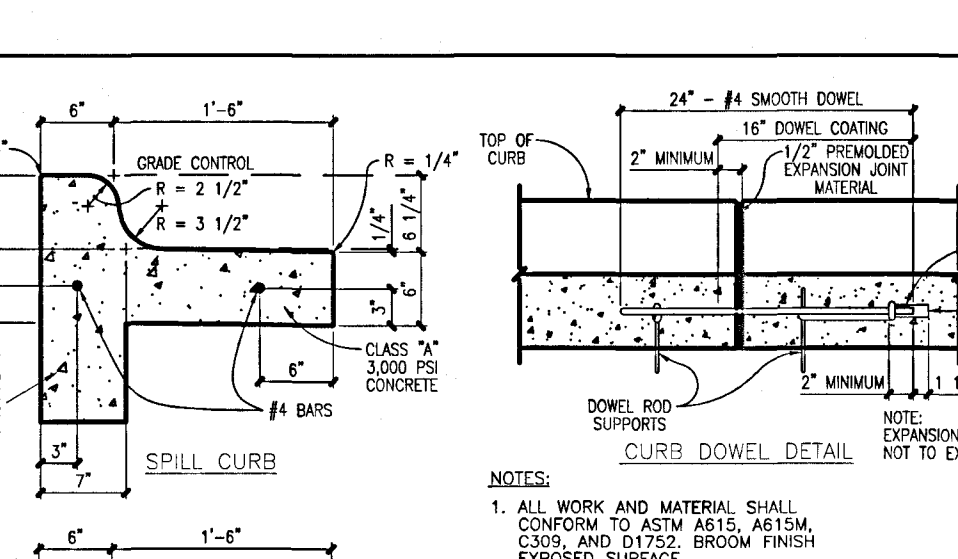
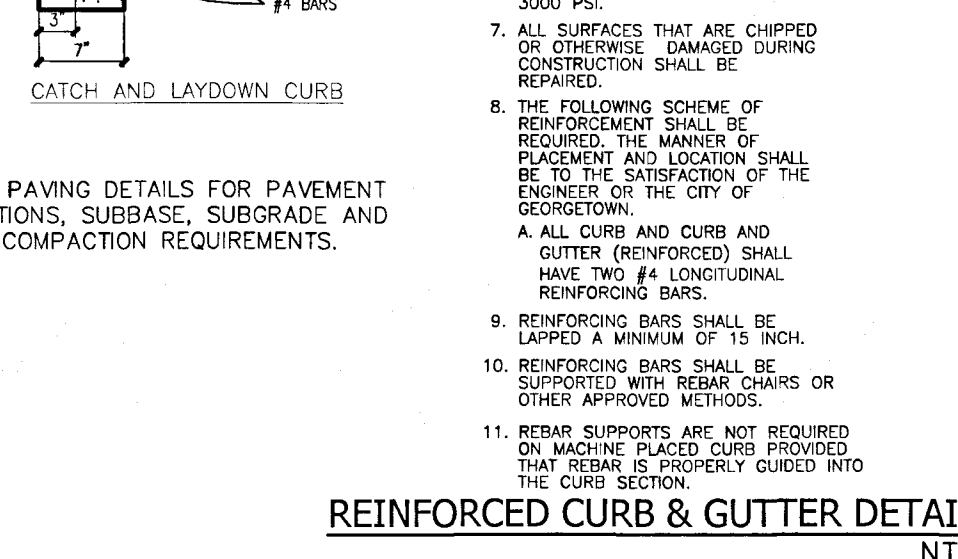


CITY OF AUSTIN		ASPHALT OVERLAY OF REINFORCED AND NON-REINFORCED PC PVT.-TRENCH REPAIR
DEPARTMENT OF PUBLIC WORKS		
RECORD COPY SIGNED BY BILL GARDNER	9/14/05	STANDARD NO. 11005-3
	ADOPTED	2 OF 2

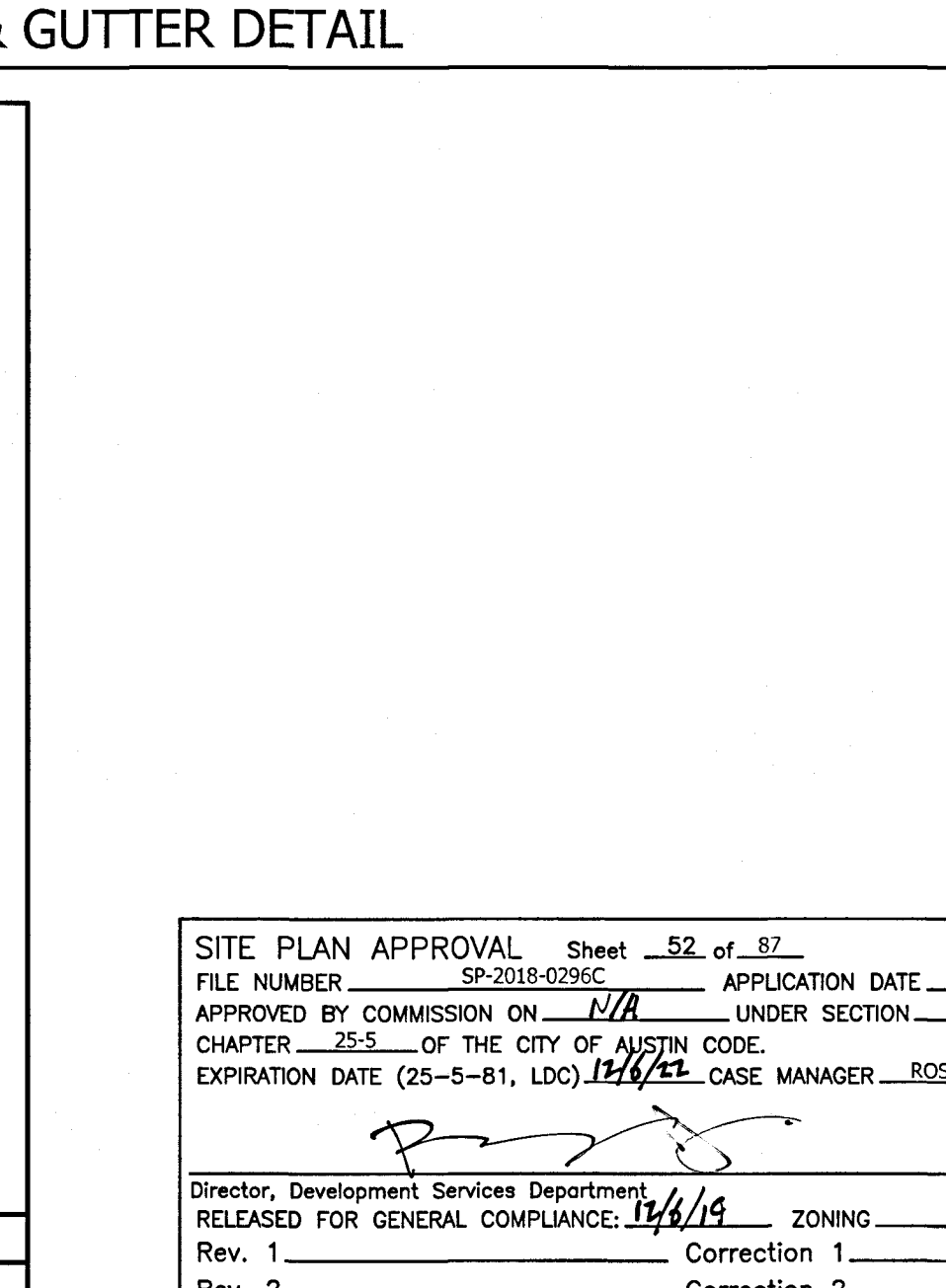


CONTRACTOR SHALL VERIFY PAVEMENT SECTION WITH GEOTECHNICAL
ENGINEER PRIOR TO CONSTRUCTION.

REINFORCED CONCRETE
CURB AND GUTTER



PRIVATE REINFORCED CURB



Rev. 2 _____ Correction 2 _____
Rev. 3 _____ Correction 3 _____
Final plat must be recorded by the Project Expiration Date, if