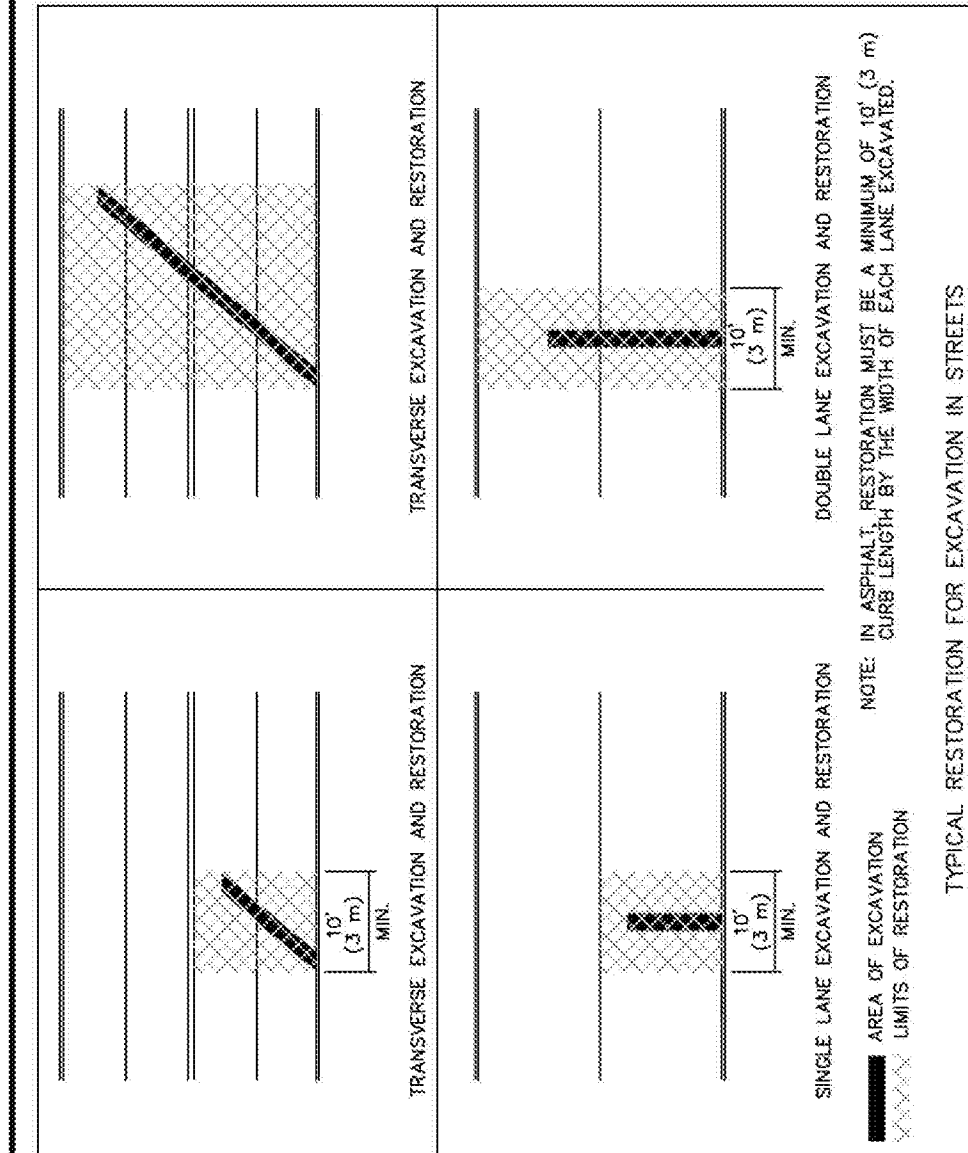


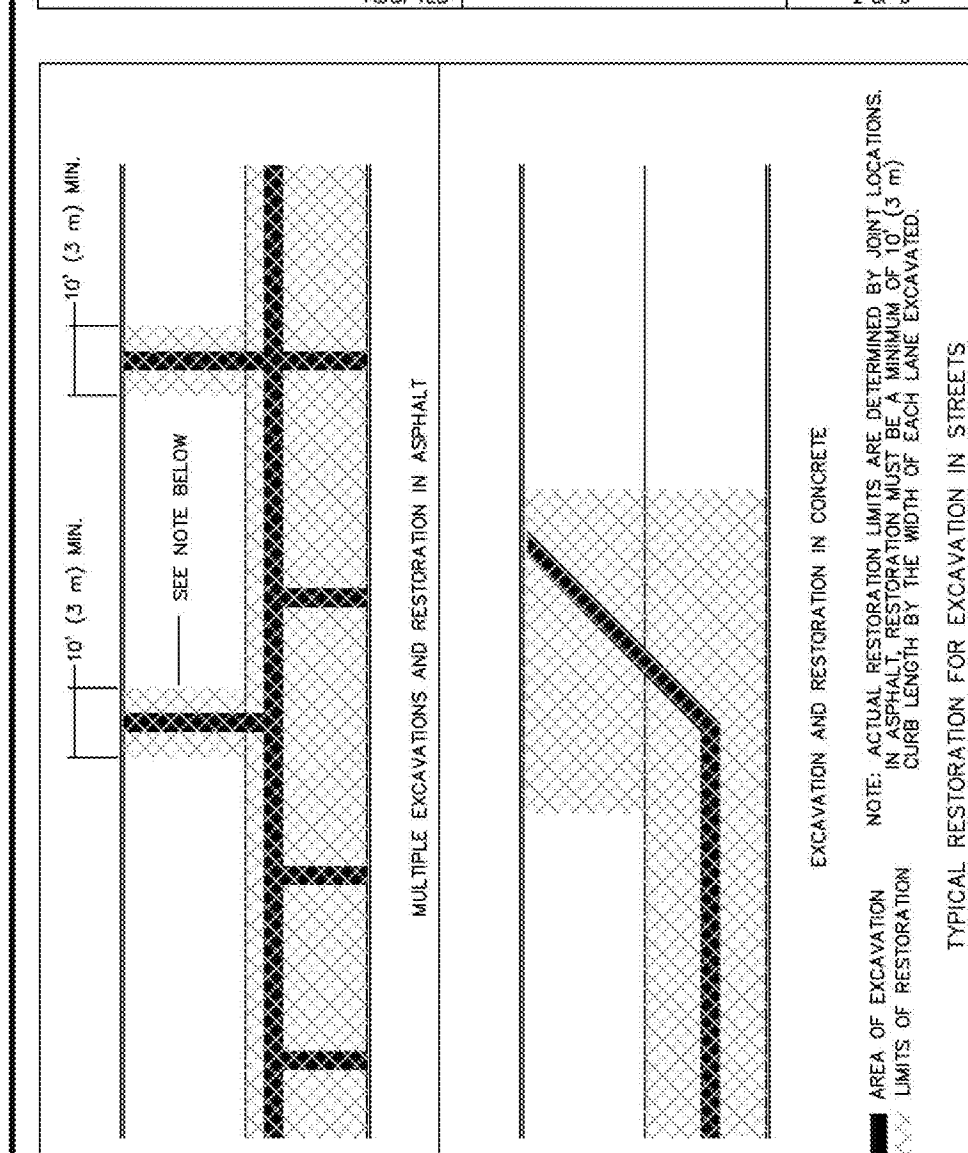
**TYPICAL PLAN**

TRENCH REPAIRS WITHIN PORTLAND CEMENT CONCRETE PAVEMENTS NOTES:  
 1. IF ANY PART OF THE TRENCH REPAIR FALLS WITHIN AN INTERSECTION, THEN THE ENTIRE CONCRETE SLAB FROM JOINT TO JOINT AND JOINT TO EDGE SHALL BE REPLACED, UNLESS OTHERWISE DIRECTED IN WRITING BY THE DIRECTOR.  
 TRENCH REPAIRS WITHIN ASPHALTIC CONCRETE PAVEMENTS NOTES:  
 1. IF ANY PART OF THE TRENCH REPAIR FALLS WITHIN AN INTERSECTION, DEFINED FROM CURB RETURN TO CURB RETURN, THE ENTIRE QUADRANT OF THE EXISTING SURFACE SHALL BE REPLACED, UNLESS OTHERWISE DIRECTED IN WRITING BY THE ENGINEER OR DESIGNATED REPRESENTATIVE.  
 2. A QUADRANT IS DEFINED AS THE CROSS-HATCHED AREA IN THE ABOVE DETAIL.

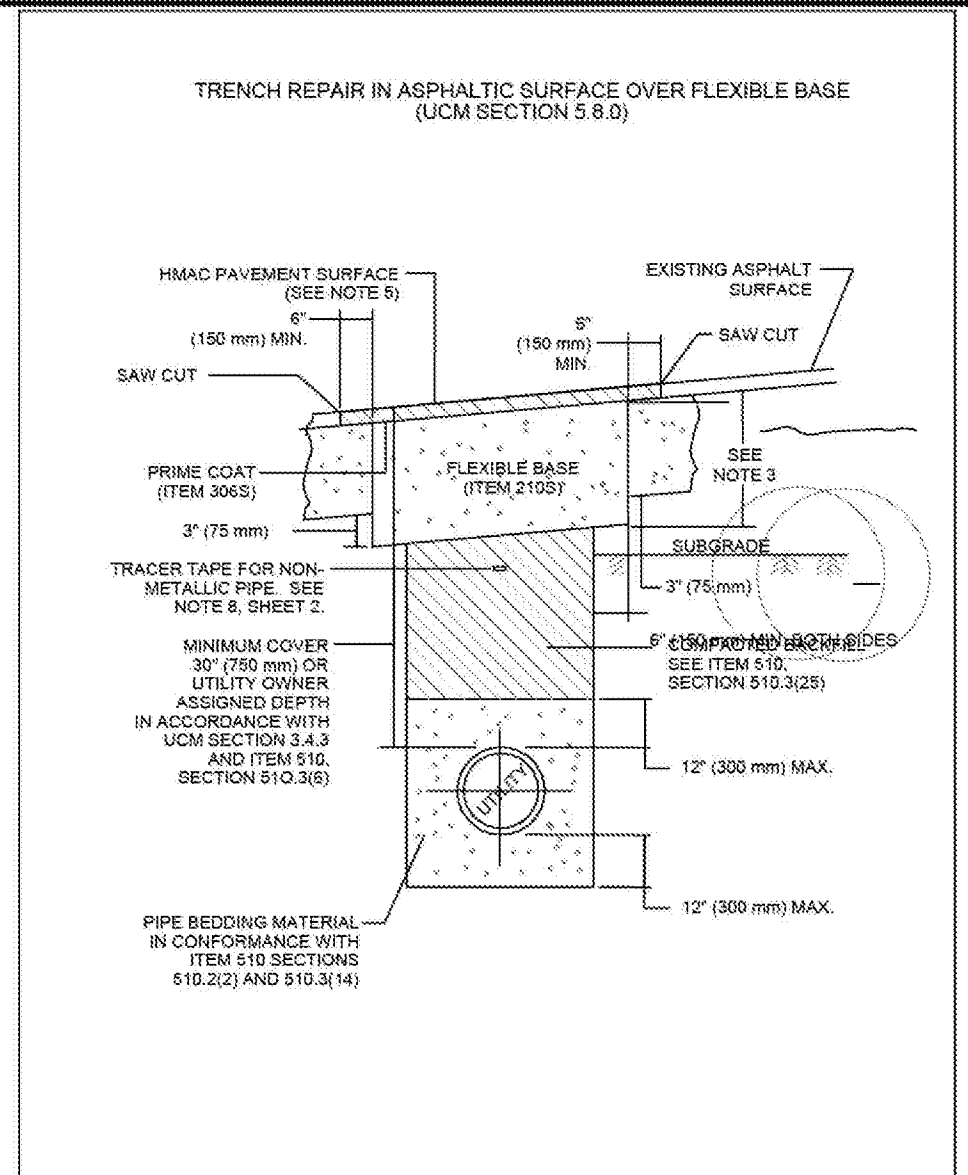
CITY OF AUSTIN DEPARTMENT OF PUBLIC WORKS	STREET REPAIR REQUIREMENTS	STANDARD NO. <b>1100S-7</b>
RECORD COPY SIGNED BY BILL GARDNER	9/14/05 ADOPTED	THE ARCHITECT/ENGINEER ASSUMES RESPONSIBILITY FOR APPROPRIATE USE OF THIS STANDARD.



CITY OF AUSTIN DEPARTMENT OF PUBLIC WORKS	STREET REPAIR REQUIREMENTS	STANDARD NO. <b>1100S-7</b>
RECORD COPY SIGNED BY BILL GARDNER	9/14/05 ADOPTED	THE ARCHITECT/ENGINEER ASSUMES RESPONSIBILITY FOR APPROPRIATE USE OF THIS STANDARD.



CITY OF AUSTIN DEPARTMENT OF PUBLIC WORKS	STREET REPAIR REQUIREMENTS	STANDARD NO. <b>1100S-7</b>
RECORD COPY SIGNED BY BILL GARDNER	9/14/05 ADOPTED	THE ARCHITECT/ENGINEER ASSUMES RESPONSIBILITY FOR APPROPRIATE USE OF THIS STANDARD.



CITY OF AUSTIN DEPARTMENT OF PUBLIC WORKS	FLEXIBLE BASE WITH ASPHALT SURFACE TRENCH REPAIR-EXISTING PAVEMENT	STANDARD NO. <b>1100S-2</b>
RECORD COPY SIGNED BY KERI JUAREZ	01/04/11 ADOPTED	THE ARCHITECT/ENGINEER ASSUMES RESPONSIBILITY FOR APPROPRIATE USE OF THIS STANDARD.

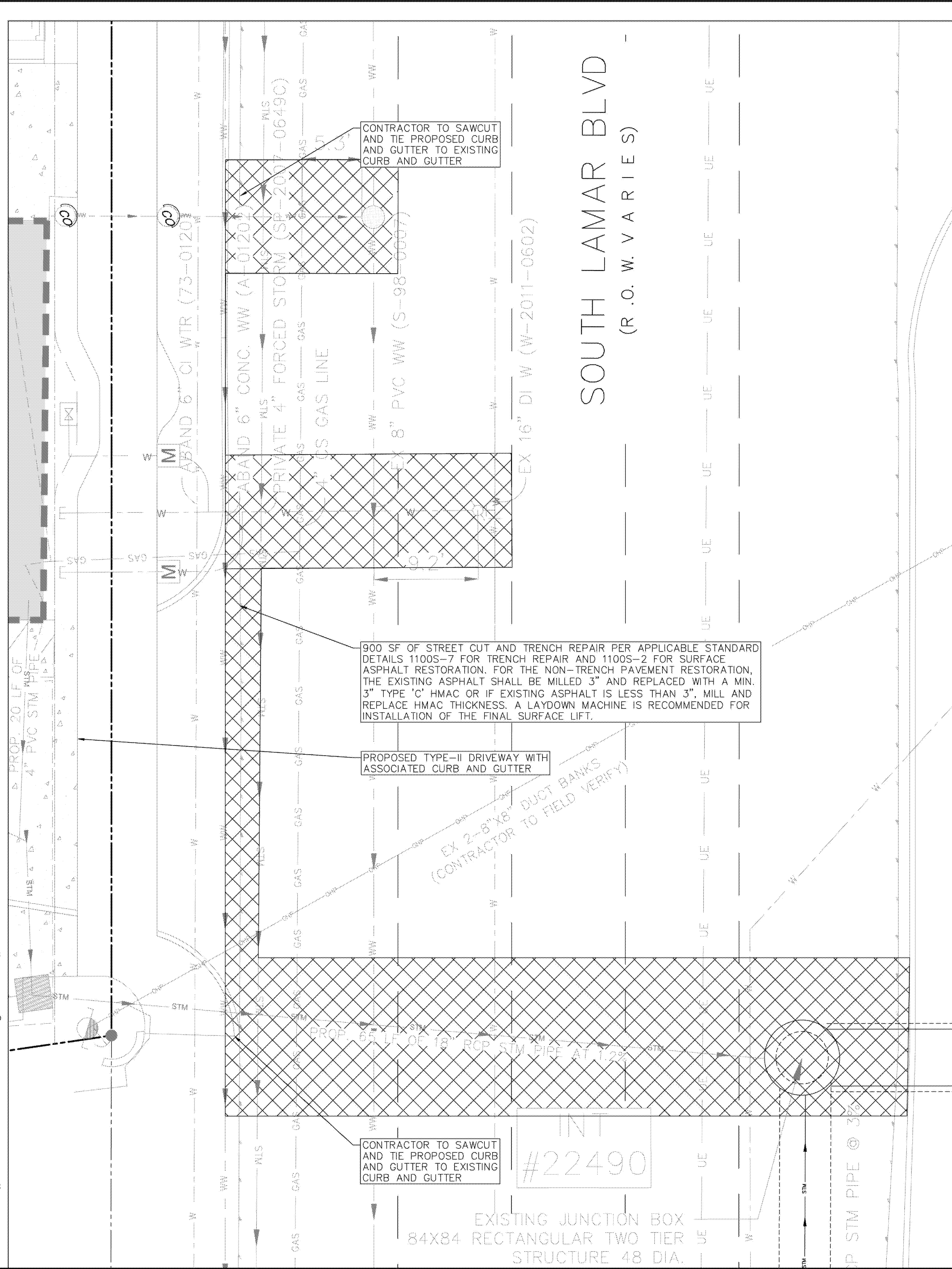
**NOTES:**

- THE EXISTING PAVING SURFACE SHALL BE SAW CUT IN A STRAIGHT LINE, A MINIMUM OF 12" (300 mm) WIDER THAN UNDISTURBED SIDES OF THE TRENCH AND SYMMETRICAL ABOUT THE CENTER LINE OF THE EXCAVATION.
- IF EXCAVATION AREA IS OPEN FOR TEMPORARY PUBLIC USE, THE SURFACE SHALL BE MAINTAINED LEVEL WITH ADJACENT RIDING SURFACE WITH COLD MIX AC OR TEMPORARY HMAc. TEMPORARY MIX SHALL BE PLACED OVER FLEXIBLE BASE.
- ROAD BASE SHALL BE REPLACED IN KIND WITH BASE THICKNESS EQUAL TO EXISTING BASE THICKNESS PLUS 3" (75 mm), BUT IN NO CASE LESS THAN 12" (300 mm).
- DAMAGED PAVEMENT OUTSIDE THE TRENCH CUT SHALL BE REMOVED AND REPLACED WITH A BASE THICKNESS OF 12" (300 mm) OR A THICKNESS MATCHING EXISTING, WHICHEVER IS GREATER.
- REPLACEMENT AC SURFACE LAYER SHALL BE OF THE TYPE AND THICKNESS BASED ON FUNCTIONAL CLASSIFICATION.
- MIN. 3" (75 mm) HMAc TYPE "C" FOR TRENCH REPAIR IN LOCAL/RESIDENTIAL STREETS.
- MIN. 3" (75 mm) HMAc TYPE "C" FOR TRENCH REPAIR IN COLLECTOR/ARTERIAL STREETS. SEE ITEM 3405, SECTION 3405.4.
- CLASS 2" PC CONCRETE (ITEM 4030) OR CONTROLLED LOW STRENGTH MATERIAL (CLSM) MAY BE SUBSTITUTED IN THESE REPAIRS FOR THE FLEXIBLE BASE AND COMPACTED BACKFILL. PC CONCRETE GREATER THAN A 2 GACK MIX WILL NOT BE ALLOWED.
- TACK COAT ALL EXPOSED EDGES AND SURFACES (SPEC ITEM 3075).
- AS PER CITY OF AUSTIN STANDARD SPECIFICATION 910, SECTION 910.23 (R/W) FOR ALL NON-METALLIC PIPE, DIRECTLY ADJACENT TO THE CENTERLINE OF THE PIPE AND A MINIMUM OF 12" (300 mm) BELOW THE SUBGRADE OR A MINIMUM OF 18" (450 mm) BELOW FINISHED GRADE OR AREAS OUTSIDE THE LIMITS OF PAVEMENT, SHALL BE PLACED INDUCTIVE TRACER TAPE IN ACCORDANCE WITH THE MANUFACTURER'S REQUIREMENTS. THE TAPE SHALL BE ENCASED IN A PROTECTIVE, HEAT PLASTIC JACKET AND COLOR CODED IN ACCORDANCE WITH APWA UNIFORM COLOR CODE.

CITY OF AUSTIN DEPARTMENT OF PUBLIC WORKS	FLEXIBLE BASE WITH ASPHALT SURFACE TRENCH REPAIR-EXISTING PAVEMENT	STANDARD NO. <b>1100S-2</b>
RECORD COPY SIGNED BY KERI JUAREZ	01/04/11 ADOPTED	THE ARCHITECT/ENGINEER ASSUMES RESPONSIBILITY FOR APPROPRIATE USE OF THIS STANDARD.

**STREET & BRIDGE STANDARD NOTES**

- STREET REPAIR NOTES (UCM 5.9)**
  - TRENCH REPAIR:** USE THE APPROPRIATE 1100S SERIES DETAILS FOR TRENCH REPAIRS: 1100S-2 (FLEXIBLE BASE WITH AN ASPHALT SURFACE), 1100S-3 (CONCRETE OR ASPHALT OVERLAID CONCRETE), AND 1100S-5 (FULL DEPTH ASPHALT STREETS). CLSM SHALL BE SUBSTITUTED FOR BACKFILL AND FLEXIBLE BASE REPLACEMENT PER THE DETAIL NOTES.
  - SURFACE RESTORATION:** SURFACE PAVEMENT RESTORATION IS REQUIRED WHEN CUTS 1) OCCUR WITHIN THE DAPCZ, 2) OCCUR WITHIN PROTECTED STREET SEGMENTS, OR 3) ARE OVER 300 LINEAR FEET IN LENGTH. USE DETAIL 1100S-7 FOR DETERMINING AREAS REQUIRING SURFACE REMOVAL AND REPLACEMENT. THE REPLACEMENT ASPHALTIC CONCRETE SURFACE LAYER THICKNESS SHALL BE A MINIMUM 2 INCHES HMAc TYPE D FOR LOCAL OR RESIDENTIAL STREETS AND A MINIMUM 3 INCHES HMAc TYPE C FOR COLLECTOR OR ARTERIAL STREETS (SEE ITEM 3405, SECTION 3405.4).
  - CONCRETE AND COMPOSITE PAVEMENTS:** IN CONCRETE STREETS, ACTUAL RESTORATION LIMITS ARE DETERMINED BY JOINT LOCATIONS. IN COMPOSITE PAVEMENTS CONSTRUCTED OF CONCRETE WITH A HMAc OVERLAY, USE 1100S-3 FOR TRENCH REPAIR (USING CLASS 3605 CONCRETE) AND 1100S-7 FOR AREA OF ASPHALT SURFACE RESTORATION.
- SIDEWALK REPAIR NOTES (UCM 5.10):**
  - DAMAGED CONCRETE SIDEWALK SHALL BE REMOVED AND REPLACED IN FULL SECTIONS (JOINT TO JOINT).
  - IN AREAS WITH SIDEWALK PAVERS, CONTRACTOR TO CAREFULLY REMOVE, STORE AND REPLACE PAVERS TO MATCH EXISTING CONDITIONS OR BETTER.
  - HAND HOLES AND PULL BOXES, ETC. WITHIN SIDEWALKS, IF UNAVOIDABLE, PLACE THEM OUT OF THE PRIMARY ADA ROUTE. ADD APPLICABLE AE APPROVED DETAILS AND SPECIFY APPROPRIATE LOAD RATINGS AND ADA REQUIREMENTS INCLUDING A SLIP RESISTANT LID AND THE ABILITY TO BE PLACED FLUSH WITH THE SURROUNDING WALKING SURFACE CROSS SLOPE.
- STREET AND BRIDGE SPECIAL NOTE**
  - ALL DAMAGE CAUSED DIRECTLY OR INDIRECTLY TO THE STREET SURFACE, SIDEWALK, DRIVEWAY, CURB & GUTTER, OR SUBSURFACE OUTSIDE OF THE PAVEMENT CUT AREA SHALL BE REGARDED AS A PART OF THE STREET CUT REPAIR. THIS INCLUDES ANY SCRAPES, COUGES, CUTS, CRACKING, DEPRESSIONS, AND/OR ANY OTHER DAMAGE CAUSED BY THE CONTRACTOR DURING THE EXECUTION OF THE WORK. THESE REPAIR AREAS WILL BE INCLUDED IN THE TOTAL AREA OF RESTORATION. THESE AREAS SHALL BE SAW CUT IN STRAIGHT, NEAT LINES PARALLEL TO THE EXCAVATION OR UTILITY TRENCH FOR TRENCH REPAIR. FOR LANE RESTORATION THE CUTS SHALL BE PERPENDICULAR TO LANE OR LANES AFFECTED AND FULL LANE WIDTH RESTORED FOR THE DAMAGED AREA. FOR CONCRETE PAVING REPAIR JOINT TO JOINT, FOLLOWING EXISTING OR MODIFIED JOINT PATTERN. REMOVE TO THE NEXT EXISTING JOINT FOR SIDEWALKS AND CURB & GUTTER. ALL SUCH REPAIRS SHALL BE AT THE CONTRACTOR'S EXPENSE AND SHALL MEET ALL CITY TESTING REQUIREMENTS, STANDARDS, AND SPECIFICATIONS.



**EXISTING LEGEND**

- WATERLINE
- WASTEWATERLINE
- STORMLINE

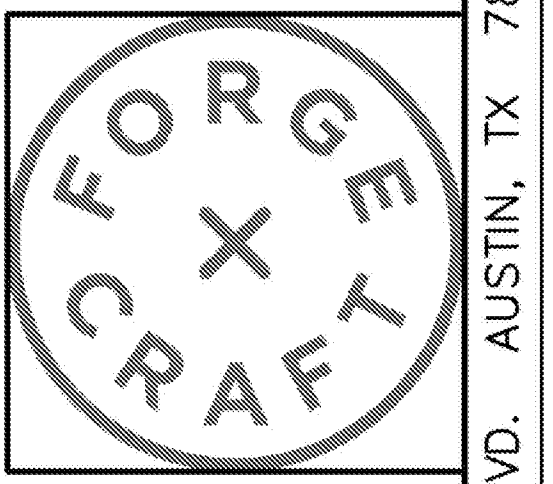
**PROPOSED LEGEND**

- WATERLINE
- WASTEWATERLINE
- STORMLINE

**ASAKURA ROBINSON**

Asakura Robinson  
1224 E 12th Street, St. 310 • Austin, TX 78702

512.351.6901 Main  
www.asakurarobinson.com



**FORGE CRAFT ARCHITECTURE + DESIGN**

608 West Monroe St., St. C Austin, TX 78704

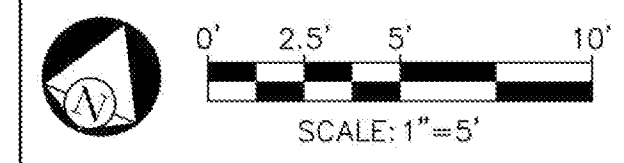
T: 512.872.6655  
www.forgecraftarchitecture.com



**Foundation Communities**

1508 S LAMAR BLVD.  
Austin, Texas 78704

AW NOTE:  
DO NOT PAVE OVER ANY AW APPURTENANCES



THE LOCATION OF EXISTING UNDERGROUND UTILITIES ARE SHOWN IN AN APPROXIMATE WAY ONLY. THE CONTRACTOR SHALL DETERMINE THE EXACT LOCATION OF ALL EXISTING UTILITIES BEFORE COMMENCING WORK. HE AGREES TO BE FULLY RESPONSIBLE FOR ANY AND ALL DAMAGES WHICH MIGHT BE OCCASIONED BY HIS FAILURE TO EXACTLY LOCATE AND PRESERVE ANY AND ALL UNDERGROUND UTILITIES.

**ZILKER STUDIOS**  
1508 SOUTH LAMAR BOULEVARD, AUSTIN, TX 78704

**TRENCH REPAIR AND PAVEMENT RESTORATION PLAN**

**CIVILITUDE ENGINEERS & PLANNERS**

5110 LANCASTER COURT AUSTIN, TX 78723 PHONE 512 761 6161 FAX 512 761 6167

APPLICANT: **NHAT MIAO** LICENSE NO. 119194 EXPIRES 12/31/2024

SCALE: AS SHOWN

JOB NO: A446-001

DGN BY: EAK

DWN BY: PB

RWV BY: NMH

SITE PLAN APPROVAL SHEET 16 OF 23

FILE NUMBER: SP-2020-0246C-SH APPLICATION DATE: JUNE 12, 2020

APPROVED BY COMMISSION ON UNDER SECTION 112 ON CHAPTER 25-5 OF THE CITY OF AUSTIN CODE

EXPIRATION DATE (25-5-81, LDG): CASE MANAGER CLARISSA DAVIS

PROJECT EXPIRATION DATE (ORD.970905-A) DWPZ DDZ

Director, Development Service Department	ZONING: CS-V, GR-V
RELEASED FOR GENERAL COMPLIANCE:	
Rev. 1	Correction 1
Rev. 2	Correction 2
Rev. 3	Correction 3

Final plan must be recorded by the Project Expiration Date, if applicable. Subsequent Site Plans which do not comply with the Code current at the time of filing, and all required Building Permits and/or a notice of construction of a Building permit is not required, must also be approved prior to the Project Expiration Date.

SHEET NO. 16 OF 23

